

★★★ Difficulty level ★ easy ★★ moderate ★★★ challenging

Resene art with Mark Rayner – 88

### You will need:

- Clean cloth
- Old paintbrush for brushing glue
- Paintbrush
- Pen for marking fabric
- Piece of patterned upholstery fabric
- PVA glue
- Resene testpot of Resene All Black
- Resene Waterborne Smooth Surface Sealer
- Ruler
- Sandpaper
- Scissors
- Varnished wooden box



**Step one**  
Lightly sand the box to 'key' the surface.



**Step two**  
Wipe off any sanding residue with a clean cloth.



**Step three**  
Apply one coat of Resene Waterborne Smooth Surface Sealer to the top edges and sides of the box. Allow to dry.



**Step four**  
Apply one coat of Resene All Black to the top edges and sides of the box and allow two hours to dry.



**Step five**  
Apply a second coat of Resene All Black to the top edges and sides of the box and allow two hours to dry.



**Step six**  
Measure, mark and cut a piece of fabric to fit the top of the box.

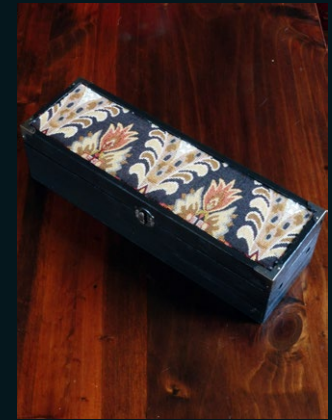


**Step seven**  
Brush a layer of PVA glue on the top of the box.

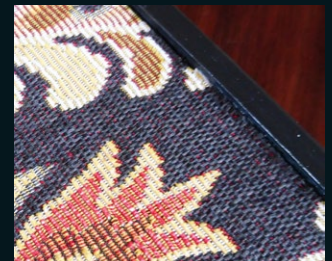


**Step eight**  
Carefully position and press the fabric onto the glue. Allow glue to dry.

It's easy to transform a plain varnished box into a stylish trinket box with a little bit of help from Resene.



**To get the look:**  
Mark varnished the wooden table with Resene Aquaclear gloss.



### Other ideas:

Create a metallic effect by applying two coats of a colour from the Resene FX Metallic range over one coat of the correct base colour.

For more ideas and inspiration visit your local Resene ColorShop or [www.resene.com/colorshops](http://www.resene.com/colorshops).

Check out our special Artists' section online [www.resene.com/artists](http://www.resene.com/artists).