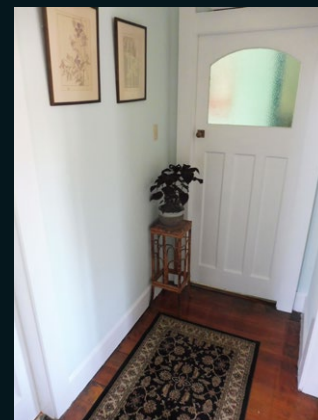


★☆☆ Difficulty level ★ easy ★★ moderate ★★★ challenging

Room for Improvement
with Mark Rayner – 1

Room	Hallway
Condition	Excellent
Ceiling	Previously painted with waterborne ceiling paint
Woodwork	Previously painted with waterborne semi-gloss paint
Walls	Previously painted with waterborne low sheen paint

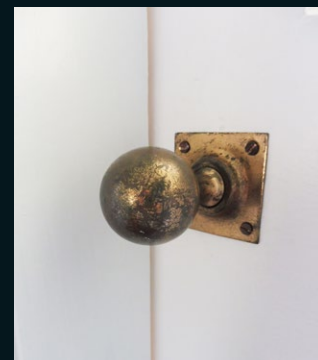
Transform a dark hallway with a selection of light and fresh Resene colours.



You will need:

- Bucket with warm water
- Clean cloths
- Dropcloth
- Paintbrushes
- Paint roller and tray
- Paint stirrer
- Resene Ceiling Paint white (you could also use Resene SpaceCote Flat)
- Resene Interior Paintwork Cleaner
- Resene Lustacryl tinted to Resene Alabaster
- Resene SpaceCote Flat tinted to Resene Soft Mint (you could also use Resene SpaceCote Low Sheen or Resene Zylone Sheen for a low sheen finish)
- Rubber gloves
- Sandpaper
- Screwdriver

To get the look:
Mark previously varnished the floor with Resene Polythane clear polyurethane.



Step one

Carefully remove door handles and light switch and socket cover plates.



Step two

Mix one part Resene Interior Paintwork Cleaner to sixty parts clean warm water.



Step three

Carefully wash the ceiling, walls and woodwork with the solution following instructions on the packaging. Wipe off any excess solution with a clean dry cloth.



Step four

Lightly sand all the woodwork to 'key' the surface and wipe off any sanding residue with a clean cloth.

Other ideas:
For a more sumptuous look consider using a bolder colour as a feature wall.

Steps 5-16 overleaf >



Step five
Carefully stir the Resene Ceiling Paint.



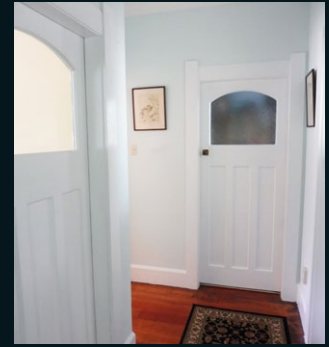
Step six
Cut in around the edges of the ceiling and around light fittings with the Resene Ceiling Paint.



Step seven
Roll the remainder of the ceiling and allow two hours for paint to dry.



Step eight
Repeat steps six and seven and allow the ceiling paint to dry.



Handy hints:

When using a combination of light and dark colours on walls always paint the lightest colour first as it's easier to cut in with a dark colour over a lighter.

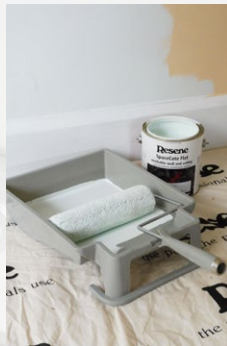
When painting it's usually best to start from the top and work your way down – paint the ceiling first then the walls. If any drips from your ceiling painting end up on your walls they won't ruin your new paintwork.



Step nine
Carefully stir the Resene SpaceCote Flat.



Step ten
Cut in around all the woodwork, corners, light switches and sockets with the Resene SpaceCote Flat.



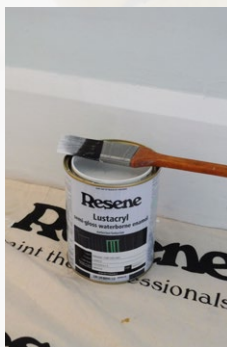
Step eleven
Roll the remainder of the walls with Resene SpaceCote Flat and allow two hours for paint to dry.



Step twelve
Repeat steps ten and eleven and allow wall paint to dry.



Step thirteen
Carefully stir the Resene Lustacryl.



Step fourteen
Apply one coat of Resene Lustacryl to all the woodwork and allow two hours to dry.



Step fifteen
Repeat step fourteen and allow paint to dry.



Step sixteen
Carefully replace door handles and light switch and socket cover plates.



Top tip:

Use an angled brush for cutting in – this will save time and create a neater edge.

For more ideas and inspiration visit your local Resene ColorShop or www.resene.com/colorshops.

Check out more project ideas online www.resene.com/projects.