

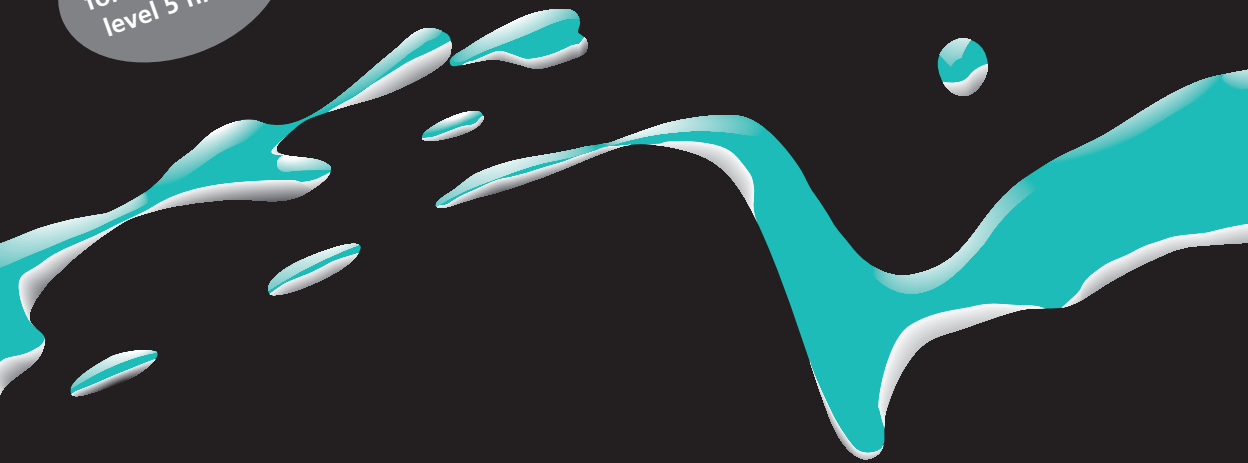
Resene product labels are updated from time to time. This label is provided as a guide for this product and may differ from the label on the container you purchase. Please discuss your project with your local Resene ColorShop team or reseller to ensure you have the right products to give you the best quality finish for your specific project.

# Broadwall 3 in 1

surfacer, sealer and finish coat

interior

Suitable  
for achieving a  
level 5 finish.



KEEP OUT OF REACH OF CHILDREN



WHITE

## SAFETY PRECAUTIONS

Read label before use. Keep out of reach of children. This material is quite bland; with vapour, occasional skin contact and even minor ingestion having negligible hazard. Repeated skin contact may, and any eye contact will, cause irritation. Harmful to aquatic life.

## PRECAUTIONS

USE WITH ADEQUATE VENTILATION. DO NOT EAT, DRINK OR SMOKE WHILE USING.

Store in original or correctly labelled container, tightly closed, in a well-ventilated area indoors, away from foodstuffs, at an ambient temperature and avoid freezing conditions. Avoid release to the environment.

## FIRST AID

IF SWALLOWED: Rinse mouth. Call a POISON CENTRE, doctor or first aider if you feel unwell.

IF INHALED: If breathing is difficult, remove to fresh air and keep at rest in a position comfortable for breathing. If experiencing respiratory symptoms call a POISON CENTRE, doctor or first aider.

IF ON SKIN (or hair): Wash with plenty of soap and water. If skin irritation occurs get medical advice or attention.

IF IN EYES: Rinse cautiously with water for several minutes. Remove contact lenses, if present and easy to do so. Continue rinsing. If eye irritation persists get medical advice or attention.

When seeking medical advice take this container with you. Further information can be obtained from AUST: POISONS INFORMATION CENTRE 131 126 or call Resene 1800 738 383.

NZ: NATIONAL POISONS CENTRE 0800 POISON (764 766) or call Resene 0800 737 363.

For use as an interior surface preparation coating. For full technical instructions see Data Sheet D810.

**SPILLS:** Wear appropriate protective clothing. Absorb with sand or earth. Collect and seal in properly labelled drums. Do not allow to enter drains or to run off into waterways. Refer to local waste management authority.

**CLEANING PAINT EQUIPMENT:** Brush/roll out as much paint as possible onto newspaper before washing brushes and rollers. Dispose of wash-up water onto grassy/unsealed area or into inside sink/basin, NOT into outside stormwater drain where it may harm fish in local waterways.

Resene Broadwall 3 in 1 is a very low VOC product designed for use over stopped and jointed wall systems in place of traditional surfacers and sealers. It equalises surface porosities; smooths minor surface irregularities; minimises textural differences; and provides a perfect base for subsequent Resene finishes. A key element to achieving a level 5 finish on plasterboard. Suitable for use as a surfacer, sealer and finish coat on ceilings in dry areas.

## Preparation

• Ensure surfaces to be painted are dry, free from dust, grease, loose material and weak, powdery or uncured jointing compound.

• Fill cracks and holes with an appropriate filler before painting.

• Where staining is present the source of staining must be removed.

• Remove excess jointing compounds where possible by sanding down to a smooth surface and wipe with a damp cloth to remove dust.

• When preparing plasterboard, avoid sanding the paper as this will cause furring and unacceptable textural differences in the finish.

• Where the paper surface has yellowed due to prolonged exposure to light or is stained, use Resene Sureseal (see Data Sheet D42).

• Prepare plasterboard to an appropriate level of finish. Resene Broadwall 3 in 1 is recommended for critical lighting areas.

• **All sanding dusts may be harmful and appropriate protection must be worn. In particular dusts from old lead or chromate-based paints or old building materials containing asbestos may be injurious to health if inhaled or ingested. Seek expert advice if the presence of these materials is suspected.**

• This product is typically used on new plaster and plasterboard. If the surface you propose to coat is unsound or not referred to, try a small test area first or contact your local Resene ColorShop or reseller for advice.

## Application

• Refer to Resene Broadwall 3 in 1 data sheet for full application information.

• Apply by airless spray following the recommendations in the quick check panel. Lightly sand with a pole sander to produce a smooth surface and wipe with a clean, damp sponge to remove dust. Wear a well-fitted dust mask when sanding Resene Broadwall 3 in 1.

• If brush or roller application is desired, use Resene Broadwall Surface Prep & Seal (see Data Sheet D807).

• Over plasterboard in dry broadwall areas, Resene Broadwall 3 in 1 may be used as a surfacer and sealer ready for topcoating. On ceiling areas in non-wet areas, Resene Broadwall 3 in 1 may be used as a surfacer, sealer and finish coat. Over new plasterboard in wet areas, use Resene Broadwall 3 in 1 as the surfacer, then apply Resene Sureseal before topcoating.

• When overcoating with waterborne paints, the coverage of that first coat may vary with application method, technique and temperature. If necessary, thin it with up to 10% clean tap water to maintain recommended coverage.

• Resene Broadwall 3 in 1 is a high build product that may be applied at high film thicknesses, releasing large volumes of moisture into the air. Maintain good ventilation throughout the drying and curing period to ensure the coating is properly cured. Poor ventilation may inhibit curing and performance.

## Be PaintWise

For tips on responsible disposal of paint, cleaning equipment and minimising the impact of your decorating on the environment see the Resene website. Do not discharge any paint into the environment. Resene PaintWise (NZ) or paintback.com.au (Australia) accepts residual unwanted paint and packaging. Or contact your Local Authority for disposal information. Please recycle.

# Resene

the paint the professionals use

In Australia: Resene Paints (Aust) Limited  
7 Production Ave, PO Box 918, Ashmore City, QLD 4214  
Ph 1800 738 383 Visit [resene.com.au](http://resene.com.au)

In New Zealand: Resene Paints Limited  
Vogel St, PO Box 38242, Wgtn Mail Centre, Lower Hutt 5045  
Ph (04) 577 0500 Visit [resene.co.nz](http://resene.co.nz)

## Quick check

**Use on:** Interior plasterboard and jointing compounds.

**Gloss level:** Flat.

**Coverage:** As a sealer – one coat at 7 square metres per litre per coat.

As a ceiling finish – one coat at 7 square metres per litre, allow to dry 1-2 hours then apply a second coat at 5 square metres per litre.

As a surfacer – one coat at 2.5 square metres per litre per coat.

**Dry time (minimum):** 4 hours. Do not apply at temperatures below 10°C or when temperatures are liable to drop below this during drying period. Drying is slowed by low temperatures and high humidity. Do not apply under damp conditions.

**Recoat time (minimum):** 4 hours.

**Usual number of coats:** One or two.

**Application method:** Airless spray (refer to Data Sheet D810 for details).

**Colour range:** White and colours off white.

**Before use:** Stir well with a wide flat stirrer.

**Clean up:** Water.

Enjoy the Resene Promise of quality on premium paints. See your Resene ColorShop or the Resene website for a copy.

In every case it is recommended that the appropriate Data Sheet and Safety Data Sheet are consulted prior to application.

Please ensure that use of this product is compatible with the substrate and surface preparation method and that the colour in this container is the same as selected. Resene does not accept any responsibility for the application of incorrect product to substrate or the application of incorrect colours. Resene products are designed to be used as a system for optimal results. Substitution may cause standard results or system failure. For further painting advice and information, call 1800 738 383 (AUST), 0800 737 363 (NZ) or visit the Resene website.