

★★★ Difficulty level ★ easy ★★ moderate ★★★ challenging

Ways with wood
with Mark Rayner – 68

Exterior

It's easy to spruce up weathered outdoor furniture using Resene Woodsman Wood Oil Stain.



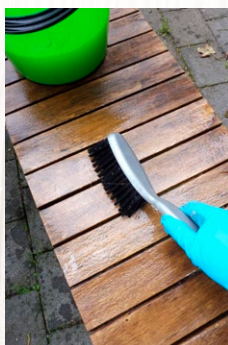
You will need:

- Bucket
- Garden hose with clean running water
- Mineral turpentine
- Outdoor wooden furniture
- Paintbrush
- Paint stirrer
- Resene Moss & Mould Killer
- Resene paint pot
- Resene Timber and Deck Wash
- Resene Woodsman Wood Oil Stain tinted to Resene Canopy
- Rubber gloves
- Stiff-bristled brush



Step one

Mix one part Resene Moss & Mould Killer to five parts clean water.



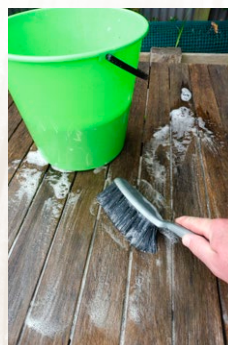
Step two

Wearing rubber gloves, soak all the wooden furniture with the solution and leave for 48 hours.



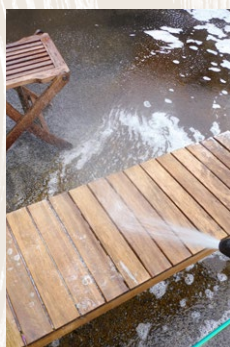
Step three

Mix one part Resene Timber and Deck Wash to three parts clean water.



Step four

Scrub all the wooden furniture vigorously with the solution using a stiff-bristled brush.



Step five

Rinse thoroughly with clean water and allow all the wooden furniture to dry.



Step six

Carefully stir the Resene Woodsman Wood Oil Stain.



Step seven

Apply two coats of Resene Woodsman Wood Oil Stain to all the wooden furniture, allowing 24 hours for each coat to dry.



Step eight

Clean brush thoroughly in mineral turpentine.



Other ideas:

For a rich dark red effect, stain the furniture with Resene Woodsman Wood Oil Stain tinted to Resene Cherrywood.

For more ideas and inspiration visit your local Resene ColorShop or www.resene.com/colorshops.

Check out more project ideas online www.resene.com/projects.