

Resene

NEWS

Resene - the paint the professionals use

Resene Paints Limited PO Box 38 242 Wellington Mail Centre Tel +64-4-577 0500 Fax +64-4-577 0664
Internet Home Page: www.resene.co.nz Email: advice@resene.co.nz Technical Help-Line: 0800 Resene (737 363)

THE RANGE 2001



2001 might seem like a blank canvas – it's not! The colours are already out there in The Range 2001 – the colour tool the professionals use

As the new century unfolds, a global warming of neutrals leads to an explosion of colour – rich reds, oranges and bold accents. Technology is another driver and brings the colour shift and already popular Resene metallic coatings. But as in the rest of the world, textured coatings are predicted to be huge.

The recently launched Range 2001 provides colours and textures based on international predictions while tailored to suit the New Zealand landscape, climate and built environment. The Range 2001 will include a broad range of neutrals and the blues will show influences of green and will be more natural, like water and ice. These will be important colours for 2001, supported by the enduring basics.

The basics, such as black, off-whites, misty greys deepening through to charcoal, ecru, taupe and beige, maintain popularity as they combine with a wider range of building and furniture materials.

Black gains greater complexity with hues of inky blue, charcoal, murky green and dark violet. Stark white is out. Instead, there is an expansion into stone, bone, beige, bamboo and cream.

The new millennium also needs energetic colours to complement the blues and neutrals. Sunset oranges, rich reds, sun-kissed yellow-golds, fuchsia pinks, sienna browns, bright limes and herbal greens fill this niche and feature strongly in The Range 2001.

Textural finishes such as the sandstone finish of Resene Sandtex is important. Texture is what will give minimalism a new edge with the metallic aluminium and blasted steel finishes of Resene Metallics.

Like The Range 2000, 2001 provides possible colour scheme suggestions

on the reverse of each colour chip. 'Colour isolators' provide the most neutral shade in which to view and separate colours, a 'gloss indicator' shows the effect a gloss finish will have on the paint colour and a 'yellow line' on the reverse of the fan deck provides guidelines on the use of yellow as part of your scheme.



Clever use of colour, together with a sophisticated collection of fittings and furniture create a chic New York environment in the Concrete Lounge, one of Wellington's trendy new places to meet. Contrasting colours of Resene 'Revolver' - dusty charcoal(2GR65) and 'Sea Fog' - off-white(10A01) add to this bar's design statement.

An explosion of colour and form, with bright blue and yellow frontage and a blue chimney angled into an arcing roof has created a colourful oasis in a suburban street in Auckland's North Shore. The colours Resene 'Burgundy' - red (1-024), 'Hot Toddy' - yellow (2T040), 'Midnight Express' - blue (1B60) produce a stimulating exterior scheme for the house.

ARCHITECT:
Frans Kamermans-Architect.



Resene
Project Services



the paint company the profes

operation teamwork

Bright and welcoming with an atmosphere of identification – that was the look Pacific Retail Group, the parent company for Noel Leeming, Computer City and Bond & Bond, wanted to achieve in the Group's nationwide re-imaging programme for its three retail chains.

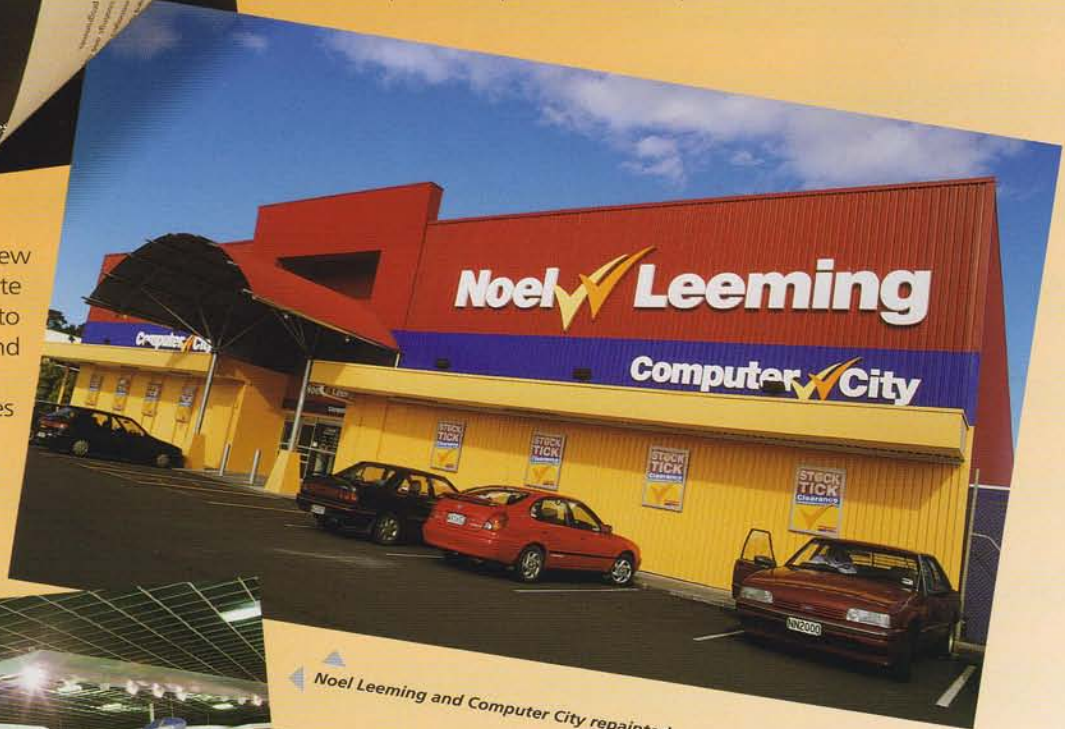
With this rationale in mind, Pacific Retail Group called in Resene Paints to assist with the colour development and make surface coating recommendations for the appliance retail stores.

To meet the client's needs, Resene compiled three files of specially mixed corporate colours for the Pacific Retail Group so that the colour formulations are regulated nation-wide for the three chains through the Resene ColorShop network. To date, 16 Noel Leeming and 14 Bond & Bond stores have been completed.

While most property owners, managers and architects recognise Resene for its development of personalised corporate colour

schemes and paint specification writing, few are aware that Resene provides a complete portfolio of project development services to ensure its clients achieve the best finish and protection.

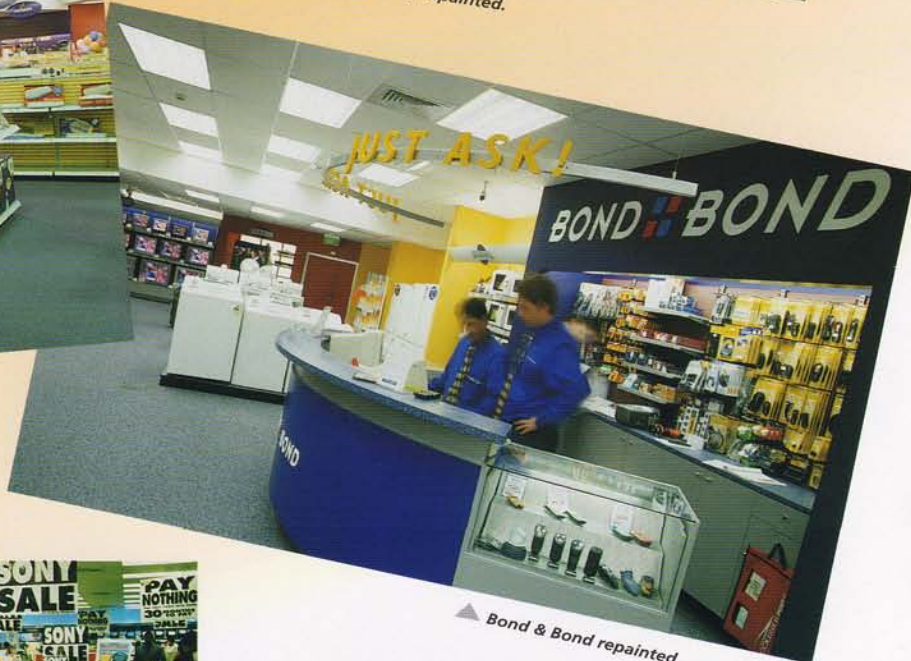
Other Resene project development services available are site visits with a client to determine the requirements of a painting project and regular site visits during the painting contract to ensure paint specifications are being met.



▲ Noel Leeming and Computer City repainted.



For more information about Resene's project development services, visit our website www.resene.co.nz or call us toll-free on 0800 RESENE (0800 737 363)



▲ Bond & Bond repainted.



▲ Noel Leeming before repainting.

▲ Bond & Bond before repainting.

OWNER: Pacific Retail Group, RESENE PAINTS: Auckland business development manager Daryl Spinetto.

close to the sun

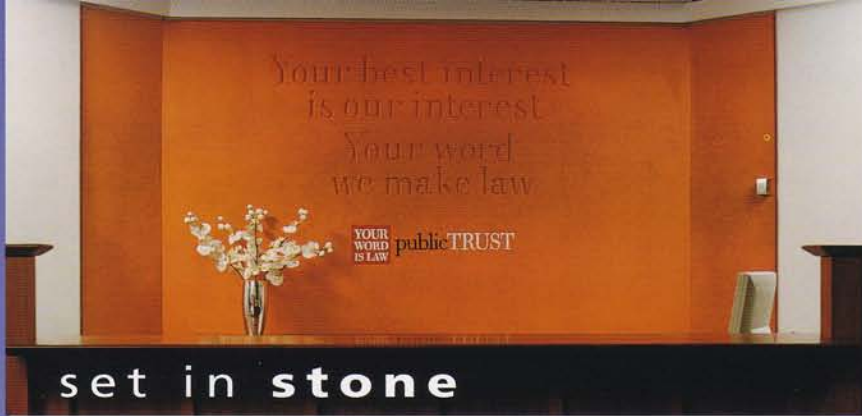
Rising 40 storeys above the heart of Auckland's business district, the Royal SunAlliance Centre is the new office for solicitors Russell McVeagh, Bell Gully Buddle Weir and corporate headquarters for Royal SunAlliance.

The \$150m office tower comprises five levels of basement carparking, a podium-level lobby with landscaped gardens, a café and gymnasium, and 32 floors of office space. The Centre has been finished with Resene X-200 Waterproofing Membrane while the interior walls have been finished in Zylone Sheen and service areas in Lustacryl water-based semi-gloss enamel.

ARCHITECTS: Peddle Thorp & Aitken, Noel Lane Architects (podium and public space), BUILDING CONTRACTOR: Fletcher Construction, DEVELOPER: Kiwi Development Trust, PAINTING CONTRACTOR: Graham Ilich Painters, RESENE PAINTS: Auckland business development manager Daryl Spinetto.



▲ The Royal SunAlliance Centre, Auckland's new benchmark in premium grade office space.



set in stone

▲ Resene Sandtex accentuates the impression that the carved highlights are engraved in stone.

▲ A close-up of the engraving

The concept of using design to encapsulate a company's ideals and create a tangible image is a global one.

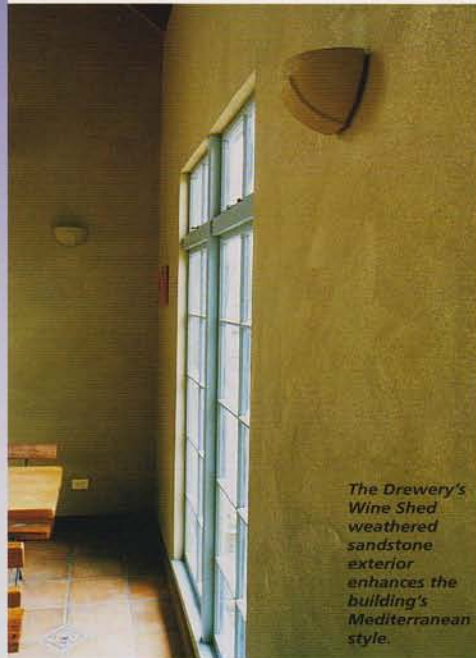
Honesty, integrity and simplicity are what the Public Trust set out to portray in its nation-wide interior fitout as part of the company's new branding identity programme.

The result was an eye-catching feature wall in the reception area which relied on Resene coatings and colour to communicate the core values of the Public Trust brand.

The Public Trust's new corporate statement creates the impression that it has been engraved in stone as a permanent commitment to its customers. "In fact, the statement has been engraved in customwood and overcoated with Resene Sandtex to give a solid stone-like effect, and is very difficult to tell apart from the real thing," says Mike McCarthy of Public Trust.

The Resene system for the feature wall comprised a base-coat of Resene Lumbersider tinted to 'Trinidad' and topcoated in Sandtex by roller and brushed off in a random Crows Foot fashion. As soon as they enter, visitors are drawn to the boldness of the stone-like wall in a specially formulated corporate colour - Public Trust Orange. In contrast, the surrounding walls have been painted in Public Trust Stone.

ARCHITECTS: Tse Group for the design work and project implementation, DesignWorks for the graphic design, BUILDING CONTRACTOR: Capital Construction for the Wellington area, RESENE PAINTS: Wellington architectural representative Mike James.



The Drewery's Wine Shed weathered sandstone exterior enhances the building's Mediterranean style.

mediterranean charm

A classic Mediterranean style finish has been created at a new Christchurch winery using Resene Sandtex.

This stunning effect has been achieved on the concrete walls of the winery with the recommended two coats of Sandtex applied by roller to give a soft patinaed look, reminiscent of Mediterranean plasters.

The chosen colours were Resene 'Sidecar' - rich cream(6YO20) - and 'Pavlova' - taupe(5Y018).

WINERY OWNERS: Graeme & Anette Drewery, RESENE PAINTS: Christchurch service representative Tony Walter.



▲ Palmerston North's Commercial Union Building painted in Resene Wintergrade Lumbersider during mid winter.

paint me cold

Anyone who says that you can't paint in temperatures as low as 2°C and re-coat on the same day is WRONG.

Doug Miller Ltd was presented with a challenge - to repaint the exterior of Palmerston North's Commercial Union Building and its basement carpark in conditions well below the recommended 10°C drying temperature. In the beginning, Resene's standard acrylic Lumbersider was specified but as the temperature dropped, the paint was neither drying nor adhering to the concrete substrate in the cold and humid conditions.

Resene's technical department was able to meet the client's requirements with Wintergrade Lumbersider which has the added feature that it can dry in temperatures as low as 2°C. In ideal conditions, the recoat time is only two hours.

"It was like you had changed the weather using Wintergrade Lumbersider", says company manager Tony Wright for Doug Miller Ltd whose only regret was that he did not have this product in the beginning.

The Resene system comprised two coats of Wintergrade Lumbersider applied with roller and brush.

Resene Wintergrade Lumbersider will be available from May until August.

PAINTING CONTRACTORS: Doug Miller Ltd, RESENE PAINTS: Palmerston North branch manager Dave Sargent.

Brushstrokes

creating magic

Kaleidoscope™

Resene Santano has launched a range of paints that change colour before the eye as if by magic – Kaleidoscope.

The secret of the Kaleidoscope range lies in what are called colour-shifting pigments. A single coating created from these pigments has the ability to change colour from any angle and even alter in different lights from the same angle.

The Kaleidoscope range can add a little magic to many familiar items from furniture and fittings through to a cell phone or the body of a car.

Following market research, Resene Santano has run with a four-colour palette of purple>green, blue>red, red>gold, green>silver.

Resene Santano is the only manufacturer in New Zealand producing colour shift paints. For more information call 0800 108 008.



electronic colour charts



Resene introduces Colorite - a collection of Resene colour charts in an electronic format on disk.

Simply, select a colour from one of eight electronic Resene colour charts, add to your colour scheme and use it with other computer aided design programmes.

Resene Colorite has electronic versions of all colours from the Resene Total Colour System which integrates all our charts into one positioning system through colour coding. New Resene Colorite is available through Resene Paints representatives.



paint specifications on-line

The complete Resene One-Line specification manual and Engineered Coating Systems manual are now available on-line from the Resene web site www.resene.co.nz

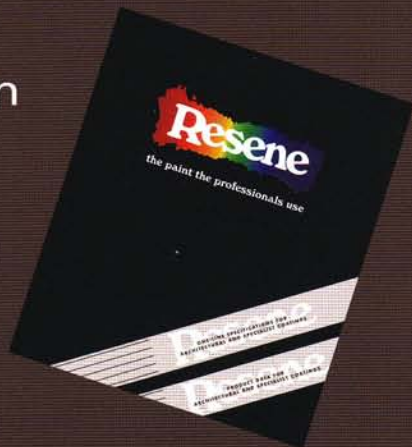
If you are on the net, this is a very quick way to find Resene specification information. Furthermore, you can print out any part of the manual or copy what you need onto your own computer.



one-line specification manual update

The latest One-Line specification manual update for registered manual holders is enclosed.

The updated datasheets are Resene Plastercote, Metallics, and Resitex Medium.



world first for resene

A textured lid used on 10 litre pails has been launched to reduce the likelihood of paint skinning. This innovative technology has a world wide patent.

Paint skins can form as a result of temperature fluctuations; however, Resene's anti skinning technology will minimise this effect thus preserving the quality of Resene paint.

ACI Plastics recognised the potential of Resene's new patent and together the prototypes were designed.



direct drawdown service

A 4 drawdowns can now be ordered directly from Resene's Direct Drawdown Centre.

Simply fax through your order and drawdowns will be mailed to your nominated address.

Drawdowns are available in all colours from The Total Colour Multi Finish System, The Range and charts 5252, 101, Heritage, Lumbersider and Hi-Glo. Special colours are also available on request.

For information about the Resene direct drawdown service, contact your local Resene architectural representative.

