



Public Buildings Prominent in Resene Architecture Awards

Renewed strength in public building design has been reflected in this year's NZIA-Resene National Awards for Architecture.

The award-winning public buildings were Wellington's public library, the extension to Victoria University's Student Union building and the James Stewart lecture theatre complex at Lincoln University. Both the library and the Victoria University extension were designed by architect Ian Athfield, while Christchurch architects Sheppard and Rout designed the Lincoln University lecture theatre.

Other awards went to the Hotel du Vin winery and hotel expansion near Auckland, designed by Geoff Richards, and a private house in Remuera, designed by Jasmax Architects.

Another goes to the Southland Building and Investment Society's new head office in Invercargill, designed by Barclay Architects in Christchurch.



Resene Paints' Managing Director, Tony Nightingale with award winner Ian Athfield (left) and John Harrison, Immediate Past President, NZ Institute of Architects.

For the first time in the history of the awards, a book also received top honours. The book - *Voices of Silence - New Zealand's Chapel of Futuna* - was written by Dr Russell Walden, a reader in architectural history at Victoria University.

"The awards programme is a mammoth task for the New Zealand Institute of Architects and would not be possible without the generous support of Resene Paints," awards jury chairman Jon Craig said. "This is the third year Resene has joined with the NZIA to recognise innovation and excellence."

Sylvia Sandford, Resene Ambassador for Colour and Design



Sylvia Sandford

Auckland interior designer and paint finish specialist Sylvia Sandford has recently been appointed Resene Paints ambassador for colour and design.

Sylvia has had a long and distinguished career in interior design and will be helping with special promotions and assisting Resene Color Shop staff with providing colour advice.

According to Sylvia, today's colours are the tones of nature, "strong clarets, beautiful greens, blues, yellows and 'greyed' tones are what we are seeing right now. Gilded golds are being added as rich highlights to these strong colours," she says.

"People are now far more aware of their environment and are going for earthy, substantial tones and colours," says Sylvia. "They are being more selective with their house purchases and are buying on a long-term basis with a view to improving their homes themselves."

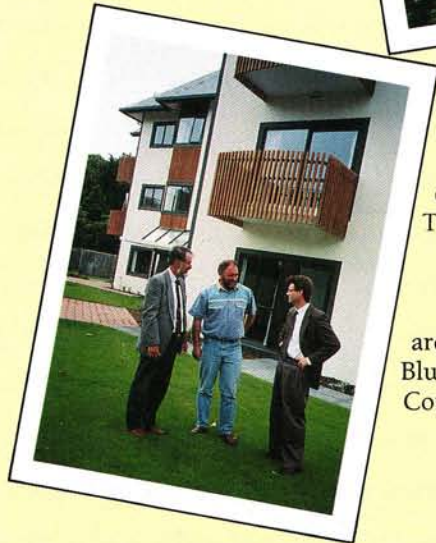
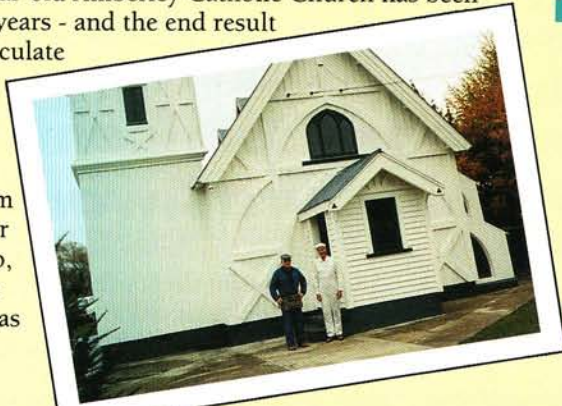
"I believe the nineties will be seen as a decade of complete individuality - people are being more imaginative in an effort to make their homes suit their personalities and values. Basically, anything goes."

Resene is publishing a series of eight paint effects booklets written by Sylvia. The first pair on Marbling and Verdigris will be available at Resene outlets in September.

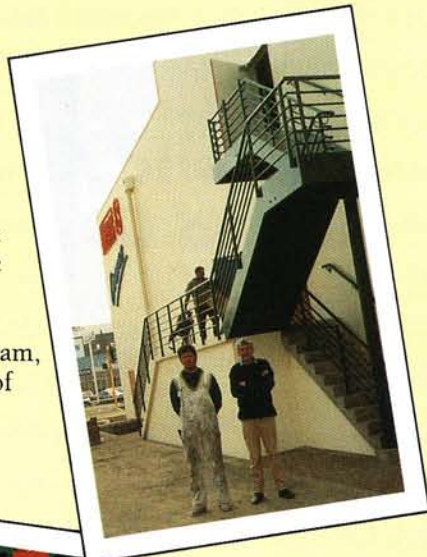
Christchurch Collection

Four recent projects in the Christchurch area have been successfully completed using Resene products.

The painting of the 127-year-old Amberley Catholic Church has been underway for just on two years - and the end result reflects the care and immaculate preparation applied by local parishoner Mark Brown. Pictured is Mark with parish priest Fr John Collins (left). Resene's Tom Costello says Mark's labour of love is probably equal to, or better than, some of the best professional jobs he has seen over the years.



The accomodation units at the Bone Marrow Trust in Cambridge Terrace in Christchurch were designed along domestic lines rather than commercial. Thixalon and F10 Glaze were applied to give the concrete panels a textured effect, with the windows and corners accentuated by colour. Pictured is architect Richard Blunt of Trengrove and Blunt; Barry Collins of BJ Collins Painting Contractors, and Resene's Geoff Edwards.



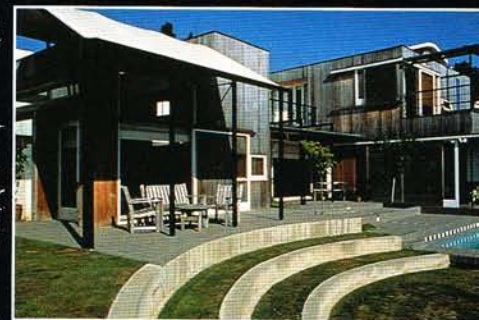
Multiplex cinemas are springing up throughout New Zealand. In Christchurch, Hoyts have built an eight cinema plus bar complex in Moorhouse Avenue with Resene X200 and Resene Ameron Uracryl 402 taking a lead role. Pictured are members of the painting team, Trevor Grimes (left) and Robin Driver of Robin Driver Painters.



One of Canterbury's long established insurance brokers, The O'Donoghue-Lindsay Group, recently opened new premises in Riccarton. Resene features strongly as shown in the photo, with the concrete walls sealed with one coat of Sureseal followed by two coats of Sonyx Semi-Gloss Acrylic all in matched colours by Resene and applied by Paul O'Donnell Painting Ltd. Pictured is Resene's Tom Costello, with painters Tony Kavanagh, Paul O'Donnell and Peter Moore.



103 AWARDS



Remuera House



Lecture Theatre, Lincoln University



Hotel du Vin winery, Auckland



Southland Building Society, Invercargill



Student Union, Wellington



Wellington Public Library

Snow Job at Ruapehu's Skotel

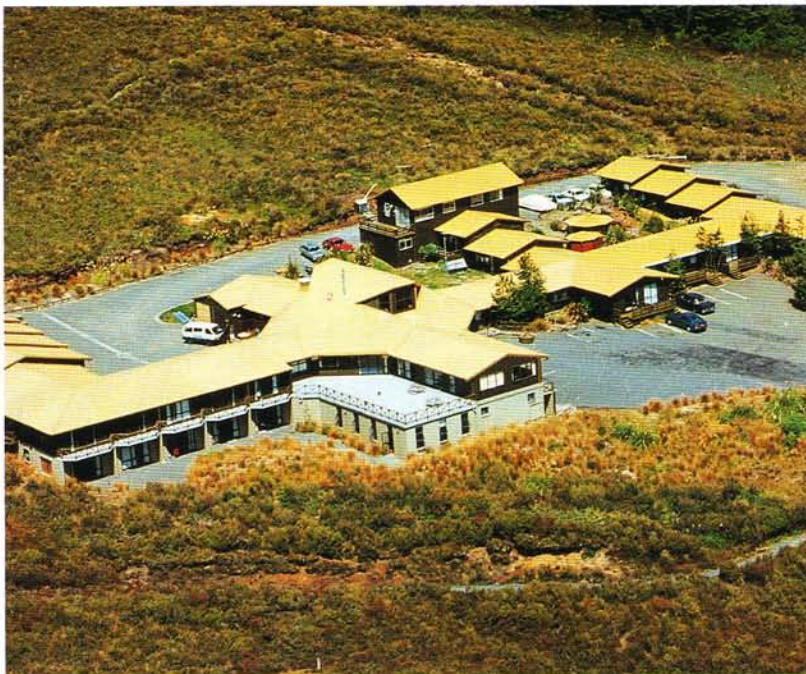
Monika and Herman Gelster's Skotel at Mt Ruapehu has been spruced-up over the summer ready for this season's onslaught of skiers.

The summer maintenance period saw the Resene Taupo team, lead by Gilmore Wall, provide advice and a specification for a complete exterior repaint including the roof.

The cedar weatherboard cladding and trim was finished in Resene Lumbersider Solid Wood Finish. A Resene acrylic roof system was applied to match existing coloursteel roofing.

Herman Gelster said the harsh snowy climate meant that maintenance was a high priority. "We were inspired with the product and service from Resene Paints and are looking forward to continued satisfaction over our next maintenance period."

A helicopter view of the Ruapehu Skotel - Resene products applied to handle the harsh local climate.



Cedar boards restored to former glory

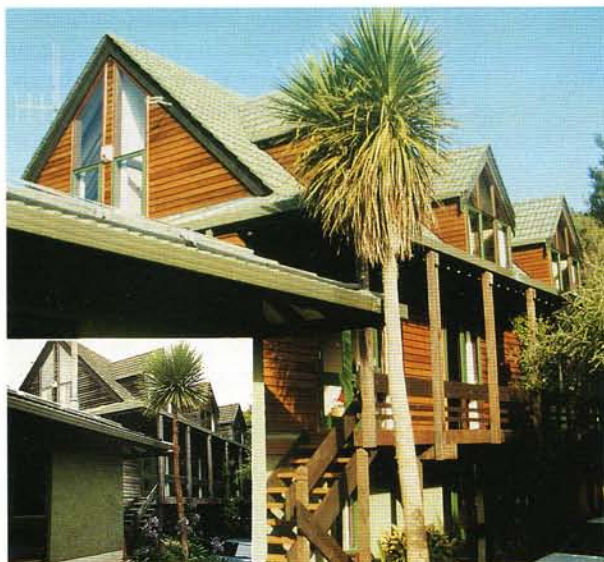
Thanks to Resene Paints' Woodsman Penetrating Oil Stain, a customer's nine-year-old cedar weatherboard house in the outskirts of Wellington is looking great.

Previously uncoated and black with mould too tough for even the odd raging Northerly wind to dislodge, the cedar boards now look a treat after two coats of Woodsman Penetrating Oil Stain.

Local Resene stockist, Peter Possegger of P and Z Decorating, Porirua, says that after looking at the problem he suggested a moss and mould treatment, a good scrub down and two coats of Woodsman.

"I kept checking on it as the job progressed and it has come up great," says Peter.

The cedar weatherboards, before and after the Resene treatment.



Resene's Answer to the Oscars

It wasn't a glitzy ballroom in Hollywood, but Lower Hutt's Angus Inn had some of the flavour and sparkle of the Oscars as the venue of this year's Resene sales conference.

Champagne and milestone certificates were sparingly awarded and lovingly treasured by the year's movers and shakers on the sales team. The big winner was Steve Scott and his Auckland team for topping sales targets in their patch.

The conference featured technical and marketing sessions, with time to discuss customer issues and current trends over the three days. Wives and partners were also included with a highlight for them being their go-kart grand prix.

Pictured is Resene Paints' sales team on-location, en masse in Lower Hutt in May.



Parnell Pampered

The Bank of New Zealand building in Parnell Road, Auckland, has had a major facelift with the help of Resene Paints.

The exterior of the building has been completely repainted using two coats of Resene X200 waterproofing membrane followed by one coat of Resene F10 glaze.

The surface - an insulated wall cladding with a textured plaster overspray - had deteriorated badly and discoloured.

Resene's northern region architectural manager, Toni Smith, carried out the inspection, wrote the spec and called tenders. The successful contractors were Webb's Property Services, an old-established, New Zealand-wide operator.

Says Toni: "It was a very successful project with all parties working well as a team on the job."



A Parnell Road landmark - a rear view of the Bank of New Zealand building

High Rise Stripes

One of Wellington's high rise towers of the early 70's has been repainted with contrasting stripes as a special visual effect - on purpose.

The stripes give the perception of height - making the NML Building at 70 The Terrace more in tune with its newer, taller neighbours.

Resene Paints' track record on The Terrace in the heart of the capital's business district has been impressive over the last three years. Of the six buildings repainted in that time, five have used product supplied by Resene.

The NML job was managed by Fletcher Construction and Building and the specialist coatings applicator was S.E. Andersen Ltd.

The smooth terrazzo panels were first sealed with Resene Smooth Surface Sealer followed by Resene X200 Waterproofing Membrane and overcoated with Resene F10 Glaze to provide the building with some self cleaning properties.

Richard Te One developed the colour scheme and colour concept primarily to give the building some vertical emphasis.

"S.E. Andersen Ltd did an excellent job under the conditions because Wellington's weather was very patchy during the October to May contract period. They just got on with it and the building is now a stand-out feature on The Terrace," said Nick Nightingale, Resene's Central Region Manager.

Pictured (from left) is: John McKelvie, Fletcher Construction and Building; Pat Warbrick, Project Manager, NML Project Services; Richard Te One, Design Consultant, R Te One & Associates; Jim Hannah, NML; Kevin Hartigan, Architectural Representative, Resene Paints.



Problem Solved

When John Holmes of Dunedin's Citiworks painting division contacted Resene Paints he had a problem.

How do you paint a high-use area in durable, anti-graffiti paint which adheres to an existing urethane coating?

Answer: apply Resene Ameron Imperite 315, an epoxy surfacer followed by one coat of Resene Ameron Uracryl 403 Acrylic Urethane.

That was Resene's John Kilby's answer and now Dunedin's Octagon looks a picture thanks to Resene Paints and the team of Citiworks' experienced painters.

The quick-drying nature of the products ensured the local landmark remained in full use throughout the process and not one member of the public was spotted .



Southern style - Dunedin's Octagon now adorned with a Resene system to help preserve its unique character.

Resene News is published by the Resene Paints Marketing Department. For further information about any of the products featured in this issue of Resene News, please contact the Resene Paints Marketing Department, 32-50 Vogel Street, Naenae, New Zealand, Telephone (04) 577 0500, Fax (04) 577 0600. Every effort has been made to ensure accuracy in this publication, but Resene accepts no liability for any errors of fact or opinion expressed herein.

