

Resene

HEAD OFFICE AND FACTORY, GOUGH ST, PETONE, NEW ZEALAND, PHONE (04) 684-319, FAX (04) 686-987 Summer 1990/1991

**Auckland
Landmark,**

**National Bank Twin
Towers in Resene**

National Bank Twin Towers was completed in decorative coatings and specialist finishes using colours selected from the Resene Total Colour Multi-finish System.

The head contractor was Mairzeal and the architect was Glossop, Chan, Partnership Architects.

Resene Auckland Architectural Manager Toni Smith is pictured at right with Stuart Johns, Manager of Holmac Holdings, the Contractor.



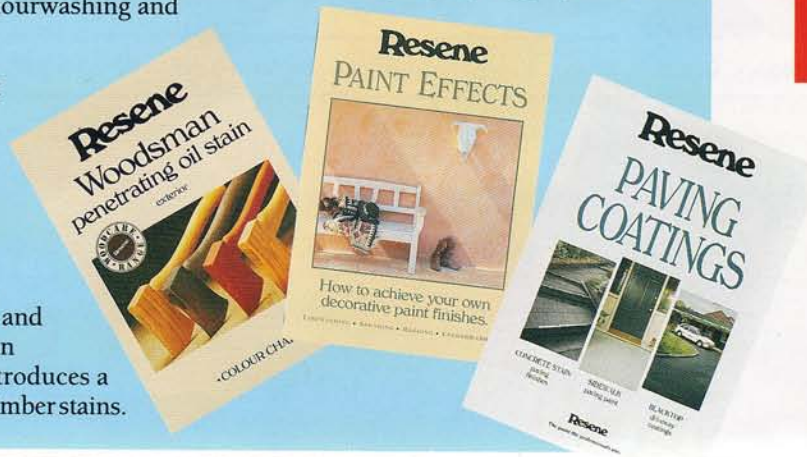
New colour selection

Resene Paints are now able to offer its customers an array of colour charts to cover the recent launch of new products and colour ranges.

The Paint Effects Chart has details and suggested colourways for sponging, ragging and introduces a range of colours for colourwashing and limewash effects.

The new Paving Coatings chart which incorporates a new colour range for Sidewalk and the latest product innovations from Resene Paints, Concrete Stain and Blacktop Driveway Coating.

Also new point of sale material and colour chart support Woodsman Penetrating Oil Stain, which introduces a new colour concept for exterior timber stains.



The first
of many
success
stories.

Pictured here is Bruce Tustin outside his premises in Karori, Wellington.

Gordon Tustin Ltd was the new DuPont Automotive Re

The Managing Director of C the Auto Refinish business. selling point" he said.

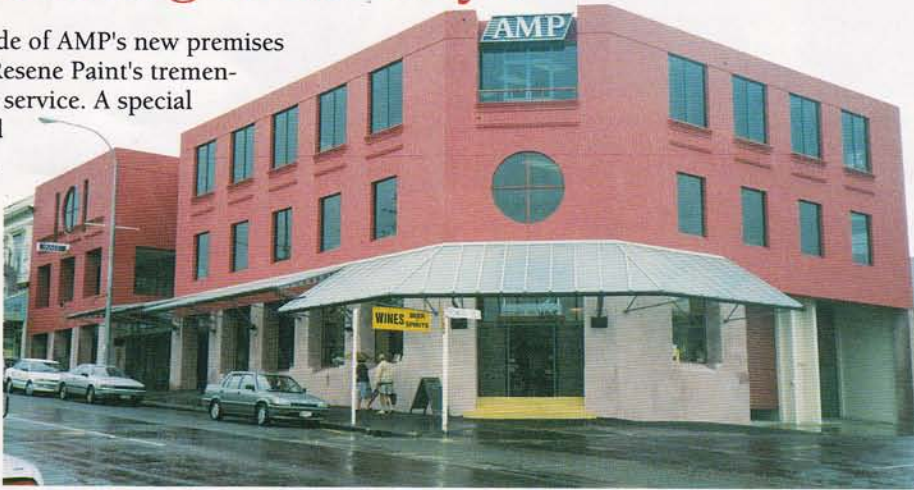
As the world leader in Auto supply colour matches for v

To support this activity Res colour laboratory to keep p Australian assembly plants.

Colour matching to ashtrays?

The arresting red facade of AMP's new premises in Parnell highlights Resene Paint's tremendous colour matching service. A special custom colour dubbed 'Ashtray Red' resulted from matching the colour of the client's favourite ashtray and apparently the name has stuck.

Resene Paints offer the customised service in response to its customers special colour needs.



Resene ColorShop Papakura

Air New Zealand hangar protected with Resene Ameron

When the Air New Zealand maintenance hangar at Christchurch Airport required a repaint, Air New Zealand specified Resene Ameron Protective Coatings.

The Christchurch branch of Programmed Maintenance Services, under the management of Charles Brown, applied 5000 litres of Amersield High Build Acrylic Urethane and Amerlock 400 AL High Solids Epoxy to an overall area of 28000 square metres.

Resene was selected for its single application Primer/Finish specification for the coloursteel and galvanised long run structure. The immense size of the building meant prospective contractors would be subject to high scaffolding and access costs but the Resene specification meant a saving in time and materials.





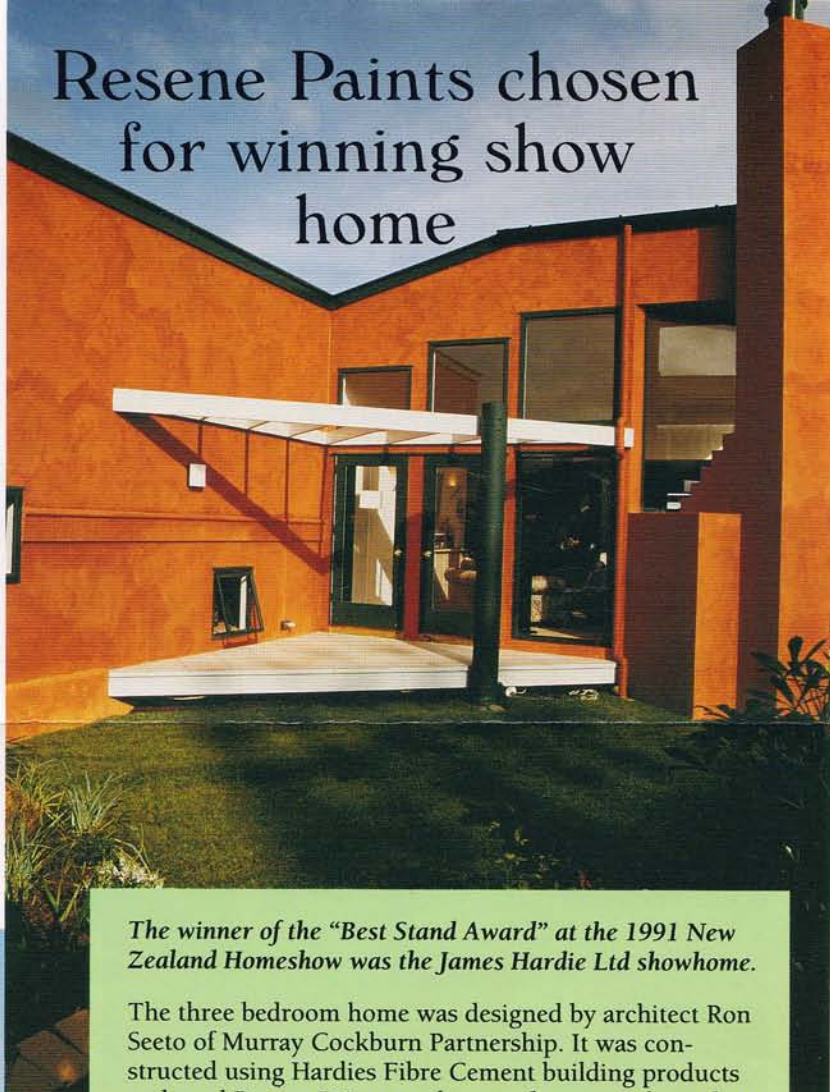
first panelbeater and auto refinisher in the country to install the finish System, which has now been incorporated for 16 months.

Gordon Tustin Ltd, Bruce Tustin has over 20 years experience in The colour indexing and trueness of colours was a major

otive Refinish, DuPont Automotive are now able to source and virtually any vehicle imported to New Zealand.

ne Automotive presently employ three full time staff in the ce with the demand for new colours from New Zealand and

Resene Paints chosen for winning show home



The winner of the "Best Stand Award" at the 1991 New Zealand Homeshow was the James Hardie Ltd showhome.

The three bedroom home was designed by architect Ron Seeto of Murray Cockburn Partnership. It was constructed using Hardies Fibre Cement building products and used Resene Paints products and systems throughout. Zylone Sheen, Washable Wallpaint was used extensively on the interior.

Commenting on the project, Resene Paints Sales and Marketing Manager, Andrew Gunn said that "the level of cooperation between the two companies and the mutual recognition of leadership in their respective markets make for an ideal working relationship."

The exterior Harditex sheets were jointed using the Resene Jointflex System and coated with Resene Resitex Textured Coating, a limewash effect was then applied to give the building its distinctive appearance.



and Johnsonville ▲



Resene distribution network expands

Recent months have seen the addition of two new Resene Color Shops and the relocation of a third within the company's network.

The first is a new shop located at 31 Elliot Street in Papakura, Auckland. Steve Scott, Resene Paints Northern Regional Manager, commented that the increased representation in the South Auckland Area was indicative of Resene Paint's commitment to increasing customer service.

The second, at 111 Johnsonville Road in Wellington, open seven days a week, brings the total to six in the greater Wellington area and the national total to thirty four.

The Taupo Resene Color Shop has been relocated to a more convenient site at 153 Ruapehu Street. Trade and retail customers alike will benefit from the move that has been combined with a higher profile in the area.

Resene

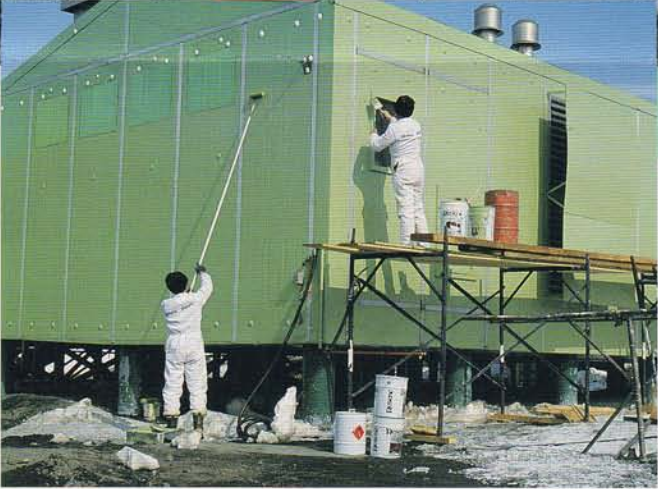


Resene Ameron conquers the Antarctic!

Christchurch painting contractors John Lyall and Steve Waldron have experienced some of the coldest summer temperatures New Zealand has to offer. They have been responsible for a recent refurbishment project at Scott Base in Antarctica.

The refurbishment involved an exterior repaint of a utility building and the complete redecoration of a building constructed for the Hilary expedition to the South Pole, which will now house a local museum.

Resene Ameron Zinc Phosphate Primer and High Build Chlorinated Rubber were specified for their ability to dry in the sub zero temperatures, as well as the elastomeric properties to cope with the expansion and contraction of the substrate during the 35 degree annual temperature fluctuation in Antarctica.



New product release

To compliment the range of paving coatings recently released, Resene Paints have developed another unique product.

Blacktop is a low cost, do-it-yourself resurfacing compound designed for recolouring and rejuvenating asphalt driveways, tennis courts and other recreational areas.

Blacktop is a heavy bodied bitumen emulsion containing graded fillers to enhance slip resistance.

It is applied quickly and easily with a Blacktop Broom and is available in Black, Red and Green.



From left to right: Upper Hutt Mayor, Rex Kirton and Tony Nightingale, Managing Director of Resene Paints Ltd. outside the new Resene factory in Upper Hutt.

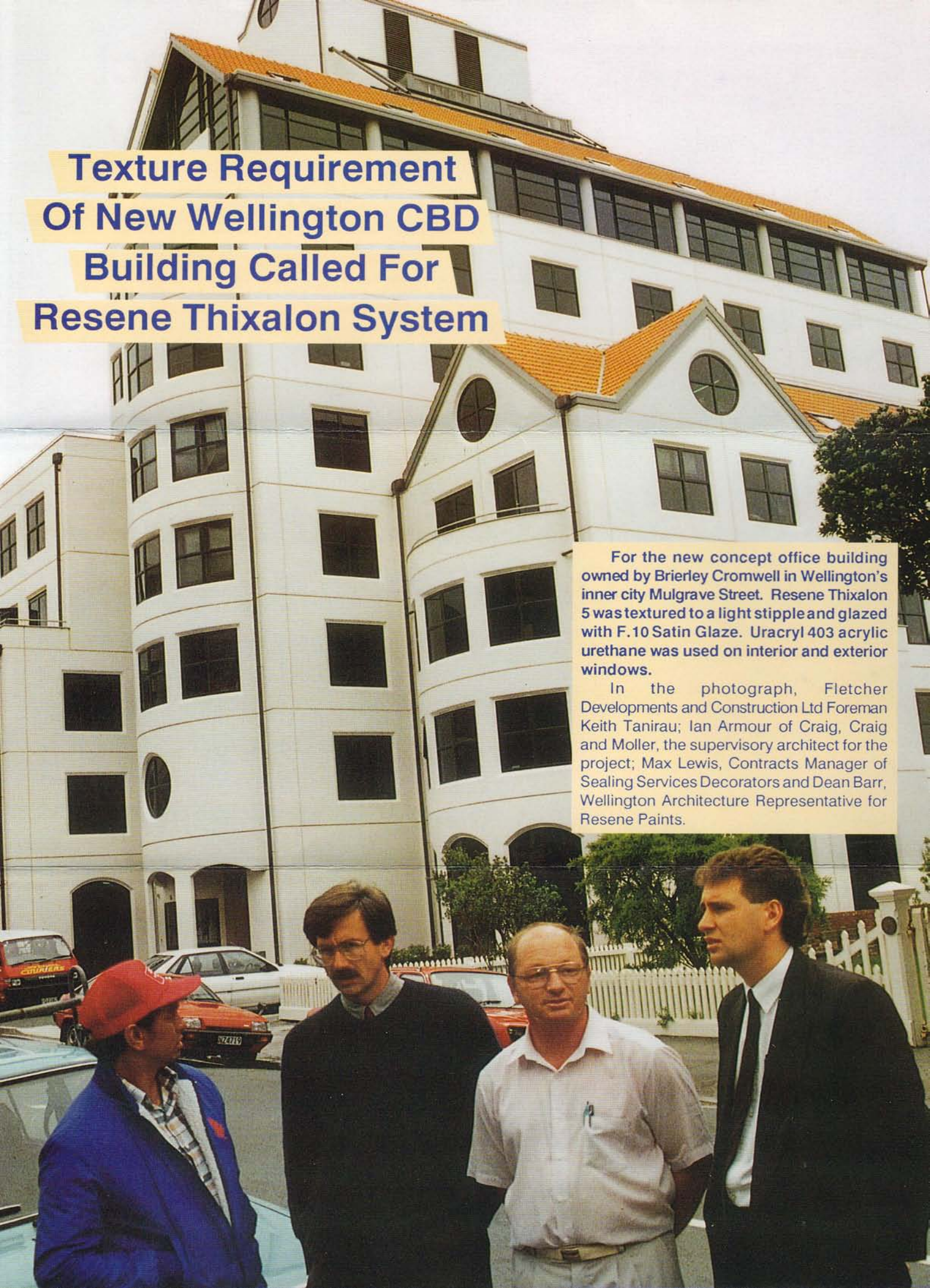
Major investment in manufacturing plant

Resene Paints has moved one of its manufacturing plants to Upper Hutt. Formerly in premises in Gracefield, Resene have extensively modernised the purpose built plant to suit their manufacturing standards.

With greatly increased capacity, the plant is dedicated to the production of all oil based architectural products and the Resene Ameron range of industrial coatings.

Every effort has been made to ensure accuracy in this publication, but Resene accepts no liability for any errors of fact or opinion expressed herein.

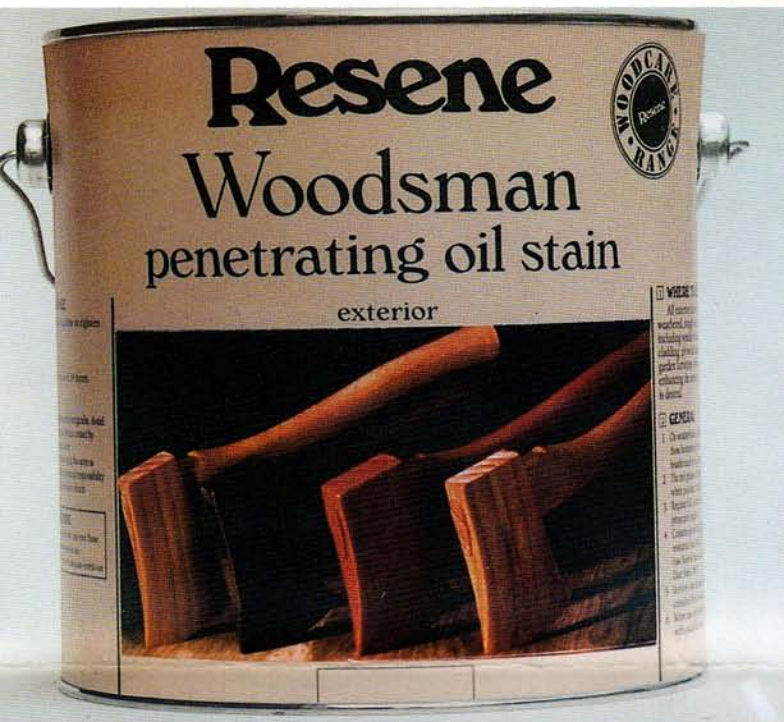




Texture Requirement Of New Wellington CBD Building Called For Resene Thixalon System

For the new concept office building owned by Brierley Cromwell in Wellington's inner city Mulgrave Street. Resene Thixalon 5 was textured to a light stipple and glazed with F.10 Satin Glaze. Uracryl 403 acrylic urethane was used on interior and exterior windows.

In the photograph, Fletcher Developments and Construction Ltd Foreman Keith Tanirau; Ian Armour of Craig, Craig and Moller, the supervisory architect for the project; Max Lewis, Contracts Manager of Sealing Services Decorators and Dean Barr, Wellington Architecture Representative for Resene Paints.



New Product Introductory Offer:

30% Off!

Resene Paints are pleased to introduce Resene Woodsman, a carefully-researched new concept in full-penetrating oil-based wood stains.

We're confident this product meets an important market need. To help you get to know it, we're offering 30% off your initial purchase of Resene Woodsman Penetrating Oil Stain.

WOODSMAN PENETRATING OIL STAIN

Produces a genuine rustic look on all exterior timber surfaces, new or weathered, rough-sawn or dressed.

- Ideal for weatherboards - especially cedar in all profiles.
- Use on board and batten cladding, plywood and profiled sheets, garden furniture, fences and beams.
- Combined excellent protection with easy application.
- 18 colours (Test Pots available) to enhance timber's natural beauty.
- Minimum surface preparation required - makes regular recoating easy for optimum timber preservation.
- Resene Woodsman is available in 4 litre and one litre cans from Resene Color Shops and selected stockists throughout New Zealand now.

Present this page at any Resene
Color Shop to get your 30% Discount
on your Resene Woodsman
Penetrating Oil Stain

***Remember, you must present
this page to get your 30%
Discount***

Special trial offer open until February 28 1991.