



Sugar with Spice by Resene

Tradition plays a big part at New Zealand Sugar's Chelsea Refinery at Birkenhead. The refinery was built in 1884 and the product made there is basically the same now as way back then.

That's why the huge task of repainting the plant and cottages over the last two painting seasons has been undertaken with meticulous care and planning. Chelsea maintenance project engineer Craig McErlane says the most exciting part so far has been the painting of the smoke-stack, some 36 metres tall.

"Wind gusts meant holding on to the safety rails with white knuckles at times. But despite these hazards, Salter Holdings enjoys painting at our site because the views across the harbour here are terrific."

A few visual tricks were used to highlight the buildings - false contrasting sashes were painted around the corrugated iron walls and bricked-up windows were painted to match existing windows. Viewed from the Harbour Bridge, it is difficult to see the difference.

Thousands of litres of Resene Hi Glo 'red damask' were



manufactured in batches, each matched exactly to the previous batch employing stringent laboratory testing procedures and manufacturing practises.

"Preparation has been the key to the job which is about 70% completed," says Craig. "All our contractors and suppliers on the job have worked extremely hard and are tops as a team - we're delighted with the end result."

Pictured above: the main refinery buildings, featuring a Resene Paints acrylic system with contrasting trims in Resene super gloss enamel.

Salter Holdings were the painting contractors for the main refinery. Pictured are the team responsible, from left: Paul and John Salter; Grant Ritchie, Chelsea maintenance manager; Sir Michael Fowler, architect; Toni Smith, Resene and Craig McErlane, Chelsea's maintenance project engineer.

Before and after the Resene treatment - one of four original brick duplexes built in 1909 for Chelsea workers adjacent to the plant. "Each contained two houses and were remembered as being nice but cold by residents," says the Chelsea company history. Ward Decorating refurbished the cottages and pictured is Craig McErlane, Chelsea's maintenance project engineer and Graham Ward.

Hands On Practice



The launch of the first two titles in the Resene paint effects series "The Sylvia Sandford Guide to Marbling/Verdigris" has been accompanied by a programme of hands-on training sessions in the various techniques for Resene staff, hosted by Sylvia.



Pictured at the Wellington session in September is (from left): Carolyn Atkinson, Joanna Nightingale, Rachel Haache and John Hillock with Sylvia Sandford demonstrating tortoise shelling.



Outside Kapiti Lights (from left) Richard Chandler from Resene Paints, A and D Decorator's Andrew Reisch and Structon group director Noel Morgan.

Lighting up Kapiti

The new Kapiti Lights complex on the main highway at Paraparaumu has added a Mediterranean mood to the coastal community.

Palm trees and the warm sandy shade of Resene's frangipani help create the feel of a stylish seaside resort in the development so-named because it is located beside the only set of traffic lights in Paraparaumu.

Kapiti Lights was designed by Structon Group, built by L T McGuiness of Wellington and painted by A and D Decorators using a Resene acrylic system incorporating X200 water proofing membrane wall coating.

It has already attracted considerable favourable attention with its prominent Kapiti Pharmacy winning the Top Shop award in the 1993 Shop of the Year awards.

The pharmacy's designer Brian Collett of Brian Collett Design in Christchurch says, "My brief for the pharmacy as I saw it was to reinforce the sea and palm nuances into a sophisticated, welcoming, warm, stimulating retail environment.

"That we were able to choose the development's exterior colour scheme contributed greatly to the general ambience."

Kapiti Lights is an on-going development with stage one comprising five shops and a tavern with provision for a further three shops.

Resene Adds to Southern Style

In Invercargill, two recent additions to the town centre flaunt the Resene style as evidence of the much reported Southland-led economic recovery.

The Trust Bank commercial centre was opened in the building of a former insurance assessment centre featuring a slightly textured look. Staff from painters HG Morsink added Resene SRG to an acrylic system to help match up existing plaster work to the new walls, after practising with Paint Effects Medium to achieve the right finish. Bob Simpson, architect, supervised the job.

The new Movieland 4 complex opened in July with immediate high patronage and its eye catching colour scheme brightens up an otherwise aged end of Dee Street. Tom Pryde, chairman of the cinema company owners was full of praise for the team which included painters Paintex Ltd, architects Collins Architects of Christchurch and locals, Amalgamated Builders Ltd.



Resene signs up Zimbabwe deal

In a major international technology deal, Resene has signed an agreement with Zimbabwe's largest paint manufacturer, Astra Paints.

According to Resene Paints managing director Tony Nightingale, Astra's approach is further proof Resene has a glowing technological reputation around the world.

"We've done very little marketing of our technology abroad - the paint companies are simply hearing about our expertise through international suppliers," he says.

Astra already holds about 60 percent of Zimbabwe's paint market, and is now poised to take that market share even higher with Resene's help.



Tony Nightingale with Colin Gooch and Brian Ketterington, from Astra Paints.



One Large Job

Pictured from left are Bruce Patterson, PMS area manager; Graham Diver and Rolland Adams, Adams Langley architect; Alan Johnson site manager for Industrial Research Ltd and Barrie Crawford from Resene.

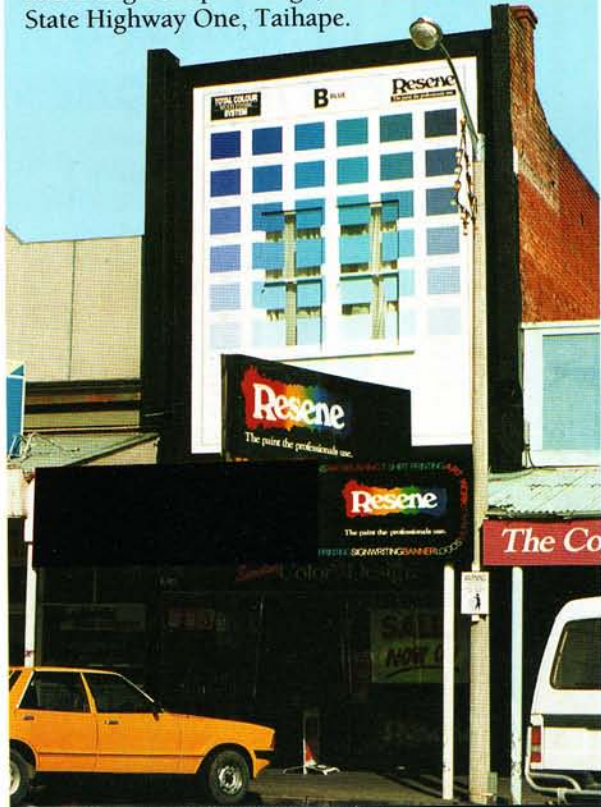
Inset: a rear view of the finished building.

The Industrial Research Ltd complex in Parnell was a big job recently for Bruce Patterson's team from Programmed Maintenance Services. The system applied was two coats of Resene X200 waterproofing membrane overcoated with F10 acrylic glaze to enhance gloss and promote low maintenance features of the system.



1B50 Main Street

The innovative signage on the Snowline Color and Design Shop frontage, a Resene stockist, on State Highway One, Taihape.



Paint Masterminds

The recent Resene Color Shop managers' conference in Wellington featured a product knowledge contest between regions that resembled all the drama and enthusiasm normally seen on TV game shows.

Technical director Colin Gooch as quizmaster fired a varied range of detailed and general questions, based around real life problems that are often asked over the counter.



The Resene branch team enjoying a calm Wellington waterfront.

The conference was a good chance for the shop managers to meet their counterparts from around the country and discuss procedural updates with the various head office managers.

And the result of the quiz? You could safely say it is under appeal given the number of challenges or alternative solutions surfacing which amazed Colin - "the level of technical knowledge amongst our branch people is outstanding, a huge bonus for our customers."



A Grape Job



An end view of the new Matua Valley warehouse.

At Matua Valley's vineyard near Auckland, one great job led to another. Its warehouse expansion was painted in Resene Hi Glo high gloss acrylic by Graham Palmer and due to the pleasing results achieved on the new warehouse, Matua decided to repaint the entire complex.

Hi Glo is ideally suited to the high rainfall, high sun and acid manufacturing vapour environment, with its good chemical resistance and weathering qualities.



As green as grass - a section of the rest of the Matua Valley complex.

There's No Escaping Resene

A new \$3 million low security wing at Rangipo Prison near Turangi features Resene products on the inside and out.

The painting contract was undertaken by Paul Oaten of Taupo Painting Contractors.

Sonyx 101, semi gloss acrylic was selected for the exterior with a durable Resene enamel system used inside where a harder yet decorative surface is desired.



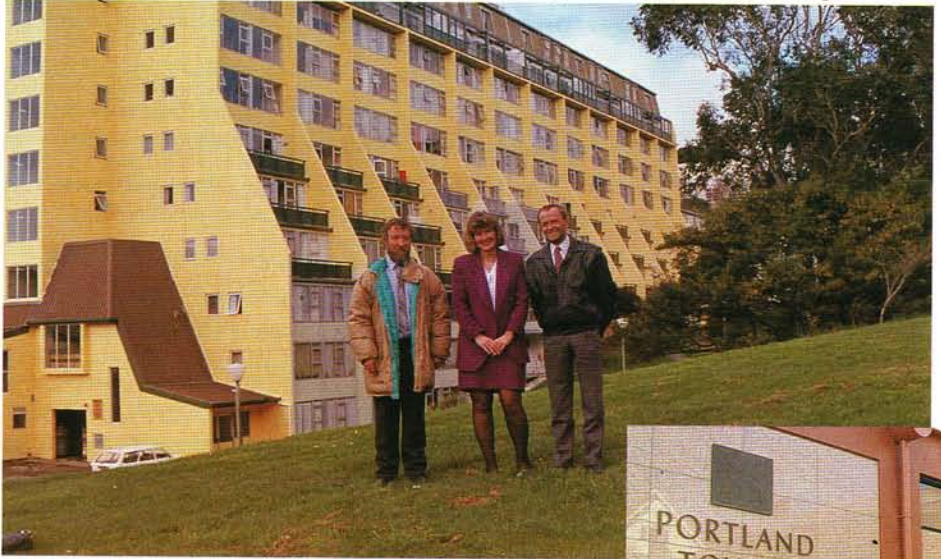
Wellington Facelifts

Wellington's mild winter has seen a flourish of new paint around the town - two projects have been the Wellington City Council's Berkley Dallard Apartments on Brooklyn Hill and the Portland Towers Hotel in Thorndon.

The exterior of the 153 apartment Berkley Dallard building was repainted by contractors John Henderson Ltd with Resene X200 waterproofing membrane overcoated with Resene Paint Effects Medium, the biggest job in Wellington to date to use Paint Effects Medium.

Across the other side of town, the Portland Towers has completely refurbished six of 10 floors before their busy season. The remaining four will be completed early next year.

Portland Towers' own team did all the work, from floors to ceilings, including new joinery. They were impressed with the Zylone Sheen used on the job because of its easier cleaning qualities and excellent hiding of subsequent touch ups.



The Berkley Dallard team: (L to R) Don Hazlewood, Wellington City Council maintenance manager Paula Comerford, Wellington City Council residential property manager, and Robbie Farrington from Resene.

Inset: The Portland Towers team: (L to R) Rick Durey hotel manager; Caroline Horton, conference manager for Portland Towers; Earl Stevenson, hotel painting supervisor; Conrad Pahl, hotel maintenance manager, and Resene's Robbie Farrington.



Palmer's Earthy Tones

The St Luke's Palmer's Garden Centre in Auckland has been repainted in appropriate Resene earthy tones - one of 29 in the Palmers chain to be repainted around New Zealand in the same style over the next 12 months.

The colours used included fiery orange for the roof, fun green trim with the main body colour, forest green.



The team responsible for the St Lukes job included (from left), Ian Stewart, Palmer's St Lukes manager; Dan Featherston, Palmer's commercial manager; Karl Wootton, Resene Takapuna branch manager and Mike Osborne of Como Painters.

Resene News is published by the Resene Paints Marketing Department. For further information about any of the products featured in this issue of Resene News, please contact the Resene Paints Marketing Department, 32-50 Vogel Street, Naenae, New Zealand, Telephone (04) 577 0500, Fax (04) 577 0600. Every effort has been made to ensure accuracy in this publication, but Resene accepts no liability for any errors of fact or opinion expressed herein.

