

In Australia, PO Box 924, Beenleigh, Qld 4207  
Call 1800 738 383, visit [www.resene.com.au](http://www.resene.com.au)  
or email [advice@resene.com.au](mailto:advice@resene.com.au)

**Resene**  
the paint the professionals use

In New Zealand, PO Box 38242, Lower Hutt 5045  
Call 0800 RESENE (737 363), visit [www.resene.co.nz](http://www.resene.co.nz)  
or email [advice@resene.co.nz](mailto:advice@resene.co.nz)



## living room *lunchtime*

**Independent Liquor**, an independent brewery based in Auckland, has a knack for identifying gaps and determining future trends to predict consumer demand. Original thinking to stand out in the market is fundamental to the company and has helped it become a local success story.

Creative Spaces was engaged to carry out a refurbishment of the existing cafeteria, with enhanced flexibility to cater for 50-60 people at one time. The cafeteria services both factory and office workers. It was clear from the brief that the cafeteria space needed to be different to the factory and office environments - a place where the staff could relax and feel as if they were at home or at a bach.

A fresh contemporary look was desired on a minimal budget. The design team took the opportunity to recycle and re-use products and equipment from the brewery such as crates for the display shelving, and bottles as feature pendant lighting, reinforcing their unique brand. In house engineers were involved to design and build these items. This helped reflect the homely feel with a 'do it yourself' approach.

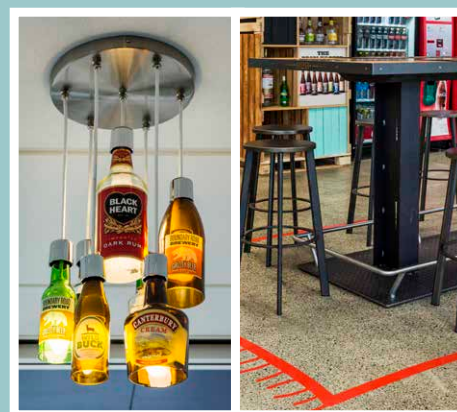
The overall aesthetic is a comfortable, relaxed, bach-like feel with a 'living room' lounge and informal areas for team building and meeting. The

completed fit-out is a vibrant, innovative space which reflects the No. 8 wire mentality of this small entrepreneurial company.

There was already an existing blank canvas in the space through the use of **Resene Sea Fog** (greyed white) on the walls. **Resene Carefree** (watery green) was added to the palette to provide a subtle feature colour to the space while complementing **Resene Sea Fog**.

Two different colour scheme options were presented to the client to create the bach-like feel, warm reds and oranges and cool greens and blues. The green and blue colour scheme was chosen for its refreshing feel. The pallet display was finished in low sheen **Resene Imprint** (blue greyed green), **Resene Reservoir** (pastel aqua green), **Resene Bach** (natural green), **Resene Renew** (light green) and **Resene Wanaka** (mineral blue), colours that were all repeated as exterior features. **Resene Blackboard Paint Black** was added for an element of fun and interaction with the staff in the cafeteria space. To complete the look the feature painted rug was created using **Resene Pulse** (flame red).

There was minimal work done to the hard fit-out so the furniture and colours were the key ingredients to bring this 'blank canvas' to life.



**Architectural specifier:** Creative Spaces [www.creativespaces.co.nz](http://www.creativespaces.co.nz)  
**Building contractor:** Cobalt Interiors [www.cobaltinteriors.co.nz](http://www.cobaltinteriors.co.nz)  
**Client:** Independent Liquor [www.independentliquor.co.nz](http://www.independentliquor.co.nz)  
**Painting contractor:** Valco Painters & Decorators  
**Photographer:** Bruce Clarke [www.incredible.co.nz](http://www.incredible.co.nz)



## playing with colour



William Nelson Park is the transformation of a flat city block on the edge of the central business district in Hastings into a vibrant urban park fusing active skate and scooter zones with passive areas and a children's playground. To service this park a new site specific public toilet was included as part of the landscape design plan, anchoring one corner of the park. The council's aim was for the toilets to match the quality of this new park.

The angular paths that lead you around the park express a strong sense of movement and it is this active and edgy geometry that has inspired the form of the new toilets. The angled precast concrete walls are treated more as freestanding landscape elements than building walls, reinforced by floating an asymmetric butterfly roof above them, with their face 'decorated' with timber battens. These battens break the blank canvas temptation the walls may offer would-be taggers and extend up into the space between wall and roof to provide security while letting air and light flow through the internal space.

The concrete and timber elements of the building could be quite heavy and austere by themselves and as the toilets are adjacent to the children's playground section of the park it was decided that the lively playground colour palette should be used to inject a sense of fun. Two colours were chosen, the primaries of blue and yellow.

The yellow, **Resene Sunflower** (sour yellow) in **Resene Uracryl**, on a vertical surface would be too much of a temptation to taggers so was used on the roof soffit floating over the building, making a striking splash and wonderful contrast to the blue sky. The clear concrete walls with the timber battens are already detailed enough so **Resene Tory Blue** (cheeky blue), a toned down version of the blue used on the equipment, is used as solid panels of colour on the walls with timber battens finished in **Resene Colorwood English Walnut** (nut brown). Steel doors and steelwork are finished in **Resene Uracryl Sandstone Grey** (grey brown) and **Resene Grey Friars** (warm grey).

Being a public toilet probably the most important consideration in design is robustness and an ability to detract vandalism but when the inevitable happens, that graffiti can be removed without damage. **Resene Uracryl** was the obvious solution. Concrete panels were sealed with **Resene Aquapel** and then clear coated with Resene Uracryl in a low sheen finish.

While housing a simple function the building seeks to offer more than is expected and is given a decorated sculptural quality to encourage the community to look after it.



Architectural specifier: Brent Scott, Citrus Studio Architecture  
Building contractor: Waipukurau Construction Ltd  
Client: Hastings District Council  
Landscape design: Isthmus Group  
Painting contractor: Napier Painting Contractors  
Structural engineer: Stratagroup Structural Engineers





## *pizza plus*

Winnie Bagoes prides itself on offering a gourmet pizza experience, each pizza hand made from scratch and loaded with toppings. But it's more than just the pizza that attracts the crowds to Winnies as diners seek a fun night out where the food, ambience and service need to be just right.

First impressions count. Enticing would be diners to come inside is key to any restaurant. Entering the Rangiora social scene Winnie Bagoes needed a full building refurbishment to reflect its trademark style. The ambience and theme were the driving force behind the paint finishes and materials selected for inside and out.

The exterior was revitalised with Resene AquaShield mineral effect in Resene Sandspit Brown (neutral beige), Resene Lumbersider in Resene Livid Brown (hot brown) and Resene Summit Roof Grey Friars (warm grey), with striking illuminated and 3D signage.

Open cavity ceiling and ducting systems can be visually unappealing. Taking the time to finish them in Resene SpaceCote Low Sheen Black has added a real sense of depth to the interior, and a striking accompaniment to the Resene Silver Chalice (pewter grey) and Resene Cab Sav (brown red) also used inside.

Architectural specifier: Element17 [www.element17.co.nz](http://www.element17.co.nz)  
 Building contractor: Code Construction Ltd  
 Painting contractor: Canterbury Propaint  
 Franchisee owners: Tim and Genevieve Sinnott  
[www.winniebagoes.co.nz/winnie-bagoes-rangiora/](http://www.winniebagoes.co.nz/winnie-bagoes-rangiora/)  
 Signage: Dream It



## *pirate playtime*

There's nothing more that children like than a fun playground that they can climb in, over and through. The pirate ship playground on the foreshore of Picton Harbour was built as part of the makeover of the Picton foreshore, becoming an instant hit with children, and their parents who can enjoy the harbour view while their children play.

In keeping with the look of a real pirate ship, it is freshly finished in Resene Waterborne Woodsman stain in Resene Earthsong (forest green), Resene Shadow Match (brown black) and Resene Japanese Maple (nature red), adding colour to the timber while still allowing the timber grain to show through.

Client: Marlborough District Council  
 Painting contractor: Downers



go with the *flow*

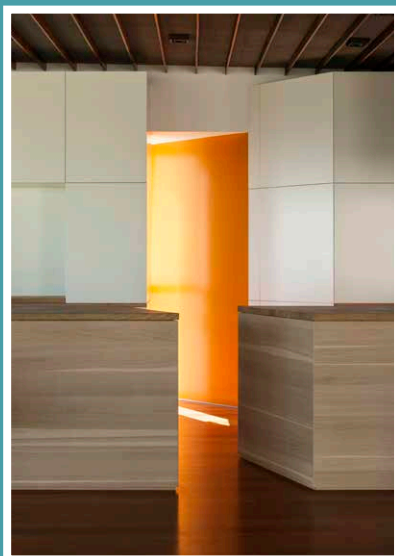


An existing 1960s rectangular two storey house sat across this Auckland site like a dam, blocking any transition between the street and the sea. The house was in poor repair, and when it was time to design a new house, it needed to work with the landscape.

Despite the allure of the seaward end of the site, it was decided to pull back from the edge and let the landscape re-engage with the sea.

The house consists of two elements, oblique and sliding past each other, with a bridging element across a section of 'reconstructed landscape'. A series of water features terrace downward through the courtyard in the middle of the house.

The concept for the colour selection came from the vibrant coloured clay exposed when excavating the site for construction. Of the many naturally occurring layers of reds and oranges, three shades were used as inspiration for the Resene paint colours applied to the wings of the shaft windows. The captured eastern light is subtly warmed reflecting off these painted walls, enlivening the main living and dining spaces.



Resene products were used liberally throughout the interior and exterior of this project. The colours used in the interior were selected to complement the client's extensive art collection. The three shades of red, orange and yellow adorning the window reveals and cabinetry of the kitchen and living were intended to evoke the warm glow one experiences in the loggia of a Spanish hacienda. **Resene SpaceCote Low Sheen** in **Resene Lemoncello** (egg yolk yellow), **Resene Hero** (knocked back orange) and **Resene Fire** (brick orange) warm the space, while on the exterior, **Resene Equilibrium** complements the feature landscaping.

This site and home now have a real sense they belong together with the natural flow between the two.



Architectural specifier: Daniel Marshall Architect Ltd  
[www.marshall-architect.co.nz](http://www.marshall-architect.co.nz)  
Building contractor: Stehr Brothers Ltd [www.stehrbuild.co.nz](http://www.stehrbuild.co.nz)  
Painting contractor: Smyth Painters  
Photographer: Simon Devitt [www.simondevitt.com](http://www.simondevitt.com)

818



## *creative* collaboration

Jess and Sally, are two neighbours that became friends over a shared driveway, where their children loved to draw with chalk.

This friendship and their children's love of chalk, has evolved into their home based business, **Chalk Design**, crafting concrete pots and homewares since early 2015.

All of their products are 100% made by them, from start to finish. Each and every product they handpaint and finish in their studio.

An evolving range of pots and homewares are made to order and designs are carefully painted on using Resene colours in **Resene Lumbersider**. The products are then sealed with **Resene Clearcoat UVS** inside and out for protection from the sun, dirt and dust so they are suitable for indoor or outdoor use.

The colour palette is updated frequently or you can choose your preferred Resene colour for your pot to complement your own colour palette. Some of their current favourite colours are **Resene Half Smalt Blue** (green blue), **Resene Clementine Orange** (persimmon orange), **Resene All Black** (deep black) and **Resene Sea Fog** (greyed white).

[www.chalkdesign.co.nz](http://www.chalkdesign.co.nz)



welcome in



The Nambour Christian College Trade Skills Centre in Queensland was born out of the Federal Government's 'Trade Training Centres in Schools' initiative to increase the employable trade skills of high school students. This refurbishment and extensions to an existing building focused on hospitality with the inclusion of a commercial kitchen and storage and also the provision of equipment. It is designed to deliver qualifications in food processing to address skill shortages in the trades of baker and pastry cook.

The skills learnt by students are put into practice in the 'Whipbird Restaurant', which adjoins the commercial kitchen. This allows students to be able to operate in a simulated commercial hospitality environment.

The majority of the built work involved demolition and re-fitting of an existing college building, with the new entry expanding into an unused pocket of the campus. It was recognised that this facility deserved an entry which was appropriate for external guests to the campus.

The bold external colour scheme came about through a last minute design change requiring 24 hour vehicle access to a transformer. This change resulted in the front door to the restaurant being forced back deep into the site and away from the primary circulation path.

The design team used a combination of dynamic structure and bold graduating colours to lead the eye and guests deep into the site and to the front door of the restaurant. The colours selected were

inspired by existing foliage on campus. Columns are bold in Resene Trinidad (zesty orange), Resene Chilean Fire (vibrant orange), Resene Pizazz (dynamic orange), Resene California (bold orange), Resene Lightning Yellow (fluoro yellow) and Resene Supernova (bold yellow). These colours are repeated on the feature wall with the addition of Resene Gold Drop (bold orange) and a background colour of Resene Half Grey Friars (mid grey).

Nambour Christian College has a long history of implementing bold colours across its campus architecture. Elements of structure and particular facades are often highlighted, providing students with a stimulating learning environment that reflects the colours of the natural campus environment.

This project won the Resene Total Colour Commercial Exterior Award 2015 and the judges thought "The use of graduated colour cleverly guides you in and distracts you from the neighbouring building. It's a smooth transition using a related scheme. The design team used a combination of dynamic structure and bold graduating colour to lead the eye deep into the site and to the front door of the restaurant. The colours selected reference the existing trees of the leafy campus.

*It's a practical yet colourful application with the colour bringing together a mix of building styles connecting them into one. Blocks of colour tumbling down the wall catch the eye and help direct guests down the new entry promenade."*



Architectural specifier: Conwell Architects [www.conwellarchitects.com](http://www.conwellarchitects.com)  
Building contractor: Bli Bli Nominees (BBN Constructions) [www.bbnconstructions.com](http://www.bbnconstructions.com)  
Client: Nambour Christian College [www.ncc.qld.edu.au](http://www.ncc.qld.edu.au)  
Colour selection: Conwell Architects [www.conwellarchitects.com](http://www.conwellarchitects.com)  
Photographer: Cameron Conwell



# BrushStrokes

Resene  
Total Colour  
Awards 2016

## win a colourful award

We're on the hunt for creative and colourful projects finished in Resene paints and colours in Australia, New Zealand and the Pacific Islands. Have you completed a project with creative and excellent use of Resene colours and paint? Then make sure you enter it into the **Resene Total Colour Awards 2016**.

**Categories include:** Residential - Interior, Residential - Exterior, Commercial - Exterior, Commercial - Interior, Public/Retail, Commercial - Interior Office, Landscape, Education, Conceptual, Installation - Display - Product, Neutrals, Heritage, Rising star - Student, Lifetime achievement. Commercial includes commercial, corporate rebranding, industrial, government sector.

It's **free** to enter. And to make it easy you can enter your images and information electronically or send them in on a disk if you prefer - whichever suits you.

**There is over \$15,000 in prizes to be won.** We showcase a wide range of entries each year on the Resene website in the **Resene Total Colour Awards** gallery and include many projects in Resene media throughout the year. For the colourful winners, each category winner will win **NZ\$1,000** and a coveted Resene Total Colour Award sculpture and the overall Nightingale winner will win **NZ\$2,500** and an exclusive Resene Total Colour - Nightingale Award sculpture.

Entries are now open. Make sure yours is in by **30 June 2016**. You can enter multiple times but each entry must be on a separate entry form. Get your entry form online from [www.resene.com/colourawards](http://www.resene.com/colourawards) or email [colourawards@resene.co.nz](mailto:colourawards@resene.co.nz) and we'll send you one.

## glowing in the dark

New **Resene FX Nightlight** is a waterborne glow in the dark paint designed to shine after the lights have gone out. It's ideal for safety signs, children's areas, step edges or anywhere a glow in the dark effect may be required. Glow in the dark by night, pale yellow by day.

Simply apply 2-3 coats over a white basecoat, such as **Resene Lumbersider**, for optimum effect. For exterior use, finish with **Resene Clearcoat UVS** for added exterior durability.

Available from Resene ColorShops and selected resellers.



## new, even tougher, wall paints

Resene is constantly working on improvements to its products and colour range, focusing on anything from durability and toughness to VOC and odour reduction. The latest changes to the **Resene SpaceCote waterborne enamel** family provide improved burnish resistance, improved scrub resistance and improved chemical resistance. The new Resene SpaceCote products are quite simply harder to damage and easier to clean.

These improvements have been achieved with a bespoke acrylic binder system with enhanced enamel cross-linking properties to provide better scrub and chemical resistance and a specialised polymeric extender package leading to improved burnish resistance.

Resene SpaceCote comes in two sheen levels - low sheen and flat. **Resene SpaceCote Low Sheen** is designed for use on interior walls throughout homes and buildings, including wet areas, while **Resene SpaceCote Flat** is designed for use on interior ceilings,

including wet areas, and can also be used as a flat wall finish where a matt surface finish is desired. Both come in an extensive range of Resene colours and are **Environmental Choice** approved.

**Resene SpaceCote** is ideal for high wear and tear areas of a home or office for a seamless look throughout the interior area from dry areas through to wet areas. It also comes in kitchen and bathroom variants with anti-bacterial silver and **MouldDefender** for extra protection in bathrooms.

The improvements don't stop there. **Resene Zylone Sheen** has also been reformulated with a bespoke binder designed for very low odour and high resistance to stains and an enhanced pigment and extender combination to provide a tougher, robust paint film with excellent washability.

These new formulation products are rolling out to Resene ColorShops and resellers.



## top 20 colours

Blackened off whites have jumped in popularity taking out the top spots in the latest release of the **Resene Top 20 colour list**. Long time favourites **Resene Spanish White** (and variants), **Resene Tea** (and variants) and **Resene Pearl Lusta** are still going strong. And for the first time, a wood stain, **Resene Pitch Black**, features in the top 20. **Resene Pitch Black** is a very popular option for exterior weatherboards and fences and is available as a CoolColour option to reduce heat and stress on the substrate.

1. Resene Alabaster
2. Resene Black White
3. Resene Sea Fog
4. Resene Double Alabaster
5. Resene Quarter Tea
6. Resene Half Tea
7. Resene Half Black White
8. Resene Half Spanish White
9. Resene Quarter Spanish White
10. Resene White Pointer
11. Resene Rice Cake
12. Resene Spanish White
13. Resene Pearl Lusta
14. Resene Merino
15. Resene Tea
16. Resene Quarter Thorndon Cream
17. Resene Pitch Black (wood stain)
18. Resene Half Thorndon Cream
19. Resene Black
20. Resene Half Alabaster

See the **Resene Whites & Neutrals** colour chart and **The Range Whites & Neutrals** to view these colours or you can order drawdowns online, [www.resene.com/drawdowns](http://www.resene.com/drawdowns).



## wintergrade works through winter

As the temperature drops, standard paints take longer to dry and can stop drying altogether. This is because the acrylic base needs some warmth to make the particles soft enough to stick together. Unless the paint is based on wintergrade technology, a paint film dried in the cold can crack and even just dry to a powder. There's an intermediate set of temperatures between 5°C to 10°C where the film appears normal but looks can be deceptive as the coating is likely to have much poorer than normal durability. The surface temperature of the substrate may be considerably colder than the ambient air temperature, which creates even more of a challenge for normal paints.

The Resene wintergrade paint range is available throughout the cooler months to help overcome the challenges of painting in cold weather. You can choose from Resene Wintergrade Hi-Glo, Resene Wintergrade Sonyx 101, Resene Wintergrade Lumbersider, Resene Wintergrade Quick Dry and Resene Wintergrade X-200. And for larger projects, we can make Resene Wintergrade Roof Primer and Resene Wintergrade Summit Roof in batches of 200 litres or more for you.

Wintergrade products are the same price as the standard versions, so painters can choose between the products based on the expected temperature conditions during the project without affecting the contract price for the project. Finishes of wintergrade products can differ slightly from the standard products so we recommend using the same product consistently for a project.

The wintergrade range is available for ordering from Resene ColorShops and selected resellers through the cooler winter period from April - August inclusive.

Which colour works?

Which brush is best?

How many coats?

Best for this surface?

How do I protect wood?

What works in bath

## ask us anytime online

Need help with a painting project or perhaps you've got a burning paint or colour question and are not sure who to ask? Ask our Resene experts and they can help you with free advice and information direct to your inbox. We've noticed more and more painters and specifiers are using the **Ask a Colour Expert** service to get some colour ideas for their clients - so do feel free to get in touch with us and our colour expert can give you some ideas to share with your clients.

Try out the free **Resene Ask a Technical Expert** service online, [www.resene.com/techexpert](http://www.resene.com/techexpert) Or try out the free **Resene Ask a Colour Expert** service online, [www.resene.com/colourexpert](http://www.resene.com/colourexpert) Or you can call our freephone number for advice over the phone during normal working hours Monday - Friday on (NZ) 0800 RESENE (737 363) or (Aust) 1800 738 383.

## Mural Masterpieces

paint the town and be in to *win*

The Resene Mural Masterpieces 2016 is open for entry. Entry is easy - register online at [www.resene.com/murals](http://www.resene.com/murals) or drop into your local Resene ColorShop and pick up a copy of the Mural Masterpieces Competition registration form.

Send your completed registration to Resene and you'll receive an entry pack containing all the information you'll need to get started. There are four classes of entry:

- Best Professional Mural

- Best Community Mural
- Best School Mural (split into tertiary and primary sections)
- Best Mural Design

Gather together your favourite community group, school children or tackle a mural yourself.

Entry is open to all ages and all mural types, so get your creative juices and paintbrushes fired up. Entries close 14 November 2016. Open to murals in Australia, New Zealand and the Pacific Islands.

## co-ordinate blinds with Resene colour

When you're trying to decorate, the key is to co-ordinate everything from carpets to paint, window furnishings to accessories. To make this even easier, Resene is working with Four Families and their blind range to help co-ordinate colour schemes.

The Resene Origin collection, is a new blind fabric range by Four Families featuring a subtly textured design, using 12 of the top selling Resene colours. It has the same colour on the front and back of the fabric and is available in 300mm width for roller blinds, romans and panels and 127mm width for vertical blinds.

And to help co-ordinate the other Four Families blinds with Resene paint colours, there is a new Colour Wise guide, with complementary Resene colour suggestions handpicked by a Resene Colour Expert designed to work with each blind fabric choice. Each guide gives 12 coordinating colours for your walls, ceiling, trims and feature walls. Simply choose your favourite blind fabric and view the complementary colour suggestions to get started on your colour scheme.

The Four Families blind collection is available at selected curtain specialists in New Zealand and Australia.







## winning folly

A new sculpture, Daughter of the Swamp, has joined the Brick Bay Sculpture Trail created by the winning team of Ryan Mahon, Sacha Milojevic, Edward Roberts and Raphaella Rose.

The Brick Bay Sculpture Trust Folly Project, supported by Resene, is an annual competition designed to support young emerging architects and to push the boundaries between sculpture and architecture - to combine the two disciplines and encourage experimentation with materials, form versus function, colour and space.

Daughter of the Swamp references the historic hinaki and the legend of Maui who was first to catch the long eel, with his wife Hina, the Daughter of The Swamp. Seemingly like a building envelope but, adhering to the traditions

of the Folly, the sculpture provides no practical protection, only spatial definition. Instead it offers an interface between you and the surrounding landscape that is observed through gaps in the brightly painted inter-laced steel. By overlapping and repeating the steel form, an effect like that of delicately woven eel traps is achieved.

The bold coloured effect has been created by coating the steel in Resene Armourcote 221 and Resene Enamacryl gloss waterborne enamel in a palette of Resene Solitaire (warm cream), Resene Hacienda (rich ochre) and Resene Pohutukawa (spicy rich red).

Visit the Daughter of the Swamp at the Brick Bay Sculpture Trail, Snells Beach.

## fresh inspiration

The latest Habitat magazine is packed full of fresh ideas and inspiration showing you how to use paint, colour and design ideas to transform spaces. It's coloured by Resene, but it's not just about painting. From the smallest to the largest projects, it covers the full spectrum of design, renovation and refurbishment.

It's a handy guide for you to keep up with the latest decorating trends and to help your clients with their choices.

If you haven't received your copy of Habitat, copies are available from Resene ColorShops and representatives or email [update@resene.co.nz](mailto:update@resene.co.nz) and we'll send you a free copy while stocks last. Remember to include your full name and postal address when you email.

Back issues of Resene Habitat and the Habitat plus collection are available for viewing on the Resene website, [www.resene.com/habitat](http://www.resene.com/habitat).



## very hungry for colour

For the second year running, the Hunger for Colour fundraiser saw over 24,000 cans of food brought into Resene ColorShops and swapped for 55-80ml testpots of Resene paint. All cans were donated to The Salvation Army and local community foodbanks.

Resene first collected cans for The Salvation Army after the Canterbury earthquakes. We learnt then that people liked donating food knowing exactly what their donation was being used for and where their donation would go.

Last year The Salvation Army provided more than 55,000 food parcels to those in need, so the families could redirect the money they would normally budget for food to pay off debt and one-off costs.



## custom mix

*"During the crash of the nineties I worked for a while with a painter who wanted me to paint a state house made of stucco and I said 'make sure you give me the specifications of the job so there are no mistakes or misunderstandings'. Ok he said and wrote on one of the paint bucket lids 'box tens'. Well that's what I did. Mixed them altogether like he said. But how was I to know that the red was for the roof and the white for the walls? Anyway I thought the old lady liked the pink on her walls after all that."*

Thanks to Max.



Resene, Licensed products since 1996

enviro-mark  
gold certified



Resene

the paint the professionals use

Mr. N.O. Whereman  
1 Don't Know Road  
Nowheresville



SENDER: Resene Paints Ltd, PO Box 38242 Lower Hutt 5045

**Incorrect mailing:** If you are receiving multiple mailings or you would like us to change your mailing details, please call: In Australia phone 1800 738 383, in New Zealand phone 0800 RESENE (737 363) or email [update@resene.co.nz](mailto:update@resene.co.nz).