

In Australia, PO Box 785, Ashmore City, Queensland 4214
Call 1800 738 383, visit www.resene.com.au
or email advice@resene.com.au

Resene
the paint the professionals use

In New Zealand, PO Box 38242, Lower Hutt 5045
Call 0800 RESENE (737 363), visit www.resene.co.nz
or email advice@resene.co.nz



Architect: Bullement Fortune Architects
Building Contractor: PCB, (www.pcbtld.co.nz)
Building Owners: Jamie and Ann Selkirk, Tania Rodger
Business Partners: Valentina and Daminda Dias, Tim Alexander,
Jo-Ann Lundon, Jonny Mackenzie
Interior Design: Anita Fijn, Fijn Design (fijndesign@xtra.co.nz)
Weta Workshop
Painting Contractor: Rob Easthope, A & D Decorators
Site Manager: Grant Fahey
Resene: Darren Morgan, Wellington Branch Manager, Ben Freaan,
Wellington Trade Representative

successful sequel



The Roxy (formerly the Capitol) was built in 1928 and was one of the last cinemas converted to 'talkies' in about 1932. It was a resoundingly popular suburban theatre in the good old days when one of the few entertainment options for residents was going to the 'flicks'. The cinema sadly closed in 1964 with the drop in audiences blamed on the introduction of television.

The building was transformed into an early version of a shopping mall but with limited success, before falling into disrepair. It was purchased with a view to recreating the Cinema experience but film making took priority and the forlorn building's wait continued until 2008 when Jamie and Ann Selkirk and Tania Rodger decided to get stuck in and realise their dream of bringing back the cinema experience in Miramar.

The initial selection of colours focused on true art deco pastels was developed further into deeper and more muted hues to create a mix of contemporary and deco to help make the space warm and inviting. Researching art deco rugs and textiles provided inspiration on authentic colour combinations from the period and helped develop themes that would work in different areas of the building.

The aim was to create a different atmosphere, through colour, in every space so there would be the sense of surprise as you moved through the building. These spaces also had to have a connecting element to create a sense of continuity. The Egyptian Papyrus columns designed by Weta on the Cinema walls inspired a green and gold combination as the common element visible in every room.

Developing the colour scheme initially involved creating vignettes on PhotoShop using Weta's sketchup pictures as a base. When a final design

was agreed on, all the colours of the vignettes were matched up to actual Resene paint colours. A small selection of colours were then custom made by Resene to complete the atmosphere of the vignettes. The colours were checked in situ and tweaked in shade and depth to suit.

Resene Environmental Choice approved paints feature inside and out, with the desirable mineral flat finish of **Resene AquaShield** on the outside, a specialist finish designed with a lotus leaf style effect that helps water bead off the surface keeping it cleaner. In a pleasing sheen contrast, trim and joinery is finished in gloss **Resene Enamacryl waterborne enamel**. Inside, **Resene SpaceCote Low Sheen** provides a durable finish throughout complemented by **Resene SpaceCote Flat** on beams, cornices and ceilings.

Outside **Resene Norwegian Blue** (slate blue) in full and half strength is paired with **Resene Destiny** (greyed blue green) and trims of **Resene Paprika** (raspberry red). Inside strength variations of **Resene Washed Green** (greyed green) and **Resene Alpaca** (light white neutral), **Resene Half Nullarbor** (donkey brown), **Resene Fossil** (beige), **Resene Half Moscow Mule** (ochre leather) are accented with Resene Metallics tinted to **Resene Milky Way** (white gold) and **Resene Ignition** (soft gold).

The design and colours focus on creating a cinema and restaurant experience reminiscent of the 1930s, warm and inviting, with a bit of 'class'. It was also the last piece of the jigsaw to complete the film infrastructure that has evolved on the Miramar peninsula.

The original cinema built in 1928 provided plenty of inspiration for a modern day interpretation of the Art Deco period that Miramar moviegoers can now sit back and enjoy in comfort.

young one



Take 49 children under 5, add staff and a regular flow of parents and it's a vital part of the design to ensure that the building not only looks good but that it can withstand the relentless wear and tear it's going to face.

The Westport Early Learning Centre uses a rich and varied materials palette to create a warm, welcoming feeling in the building that captures and celebrates the unique feel of the West Coast environment, which also demands a selection of robust materials and detailing. The undulating roof plane performs at both an aesthetic and practical level; it ties the building to its stunning mountain backdrop while helping to moderate the effects of sound reverberation in the main play space.

The main entrance is expressed by a covered link way (to a future 'transition to learning' building) that marks a circulation spine that continues inside the building dividing the play spaces from the more private staff-based ancillary spaces. The building is arranged around the two main play spaces, one is a nursery for the under two's and the other larger space for preschool children. A 'stepping stone' idea

in the floor vinyl along the spine helps the children locate themselves in relation to the different functions in the building.

Play spaces are located on the north side receiving all-day sun, which is tempered by large canopy and corner 'eyebrow' solar shading. The main play spaces open up to a covered deck, which is well protected from the prevailing westerly weather by projecting 'pods' clad in Cedar weatherboarding and coated with **Resene Waterborne Woodsman** tinted to Honeycomb.

The fibre-cement board cladding is painted in a warm **Resene Eighth Canterbury Clay** (warm cream) in **Resene Lumbersider** low sheen waterborne paint with the colour being carried through internally in **Resene SpaceCote Low Sheen** waterborne enamel tying the composition together. Feature colours such as **Resene Fahrenheit** (raisin red), **Resene Pumpkin** (muted orange) and **Resene West Coast** (murky mustard green) have also been used to punctuate the window bands and create a rhythm in the elevations. **Resene Aquaclear** waterborne urethane also features on the interior to finish and protect the perforated plywood ceiling-mounted acoustic panels. All paint systems are from the Resene Environmental Choice approved range. **Resene SpaceCote** is a durable easy care interior finish, ideal in wear and tear and wet areas.

The landscape design is fully integrated with letters and numbers formed in the concrete paving that the children can fill in with insects, shells and rocks from the native area and set into a resin. Fun filled from entrance to exit, this building is a treasure trove of inspiring activities and ideas for growing minds.



roughing it

A six panel application of Muros Roughcast Concrete with two 150mm returns on either side provides a striking floor-to-ceiling concrete feature wall in the Yoobee (Apple Computer) flagship store located in the new Britomart precinct. Finished in Environmental Choice approved **Resene Lumbersider** low sheen waterborne paint, this panel system brings the rugged texture we usually associate with exterior substrates indoors enabling you to combine striking textural options with your favourite Resene colour for a stunning feature.

Panel supplier: www.muros.co.nz



Architectural Specifier: Gary Wyatt, Project Architect, Dalman Architecture (www.dalman.co.nz)
Painting Contractor: David F Carmine Painting

fire side

Having started life as the Pukekohe firestation in 1924. 27 Edinburgh Street is now home to affectionately nicknamed Ed St, a vibrant bar and restaurant.

The two storey firestation was first redeveloped into a bar in the 1980s and with the most recent redevelopment it has now become the upmarket gastro pub Edinburgh Street sporting a new look and fixtures and fittings inside and out. The main downstairs area has been opened up with bar and casual dining space. Upstairs caters for formal dining. The creation of an indoor/outdoor area with a louvered roof and fireplace enables the space to adapt to the season.



Ed St's design is a tribute to the heritage of the building, retaining its character and restoring it to its former glory as one of Pukekohe's most iconic historical landmarks. The décor is a fusion of old meets new with a funky twist.

Outside the plaster is finished in **Resene Limelock** cure and seal to lock in any free lime then finished in **Resene Lumbersider** low sheen waterborne paint tinted to **Resene Half Mondo** (lizard brown), complemented by bargeboards and windowsills finished in **Resene Sandspit Brown** (soft beige) from the **Karen Walker** collection and soffits finished in **Resene Albescent White** (pale beige), also from the **Karen Walker** collection.

The galvanised frame on the louvered roof is finished in **Resene Galvo-Prime** galvanised iron primer topcoated in **Resene Summit Roof** satin waterborne roof paint tinted to **Resene Ironsand** (brown grey).

And for a final sleek finishing touch, steel planter boxes are protected with **Resene Uracryl** tinted to **Resene Black**.

Inside the palette turns monochromatic with concrete walls finished in **Resene SpaceCote Low Sheen** tinted to **Resene Double White Pointer** (beige neutral), with a double strength below the dado. In a stark contrast, timber trim, doors and the dado are finished in high gloss **Resene Enamacryl** tinted to **Resene Black** complemented by bench seats protected by **Resene Uracryl** tinted to **Resene Black** for extra durability. The complete look is finished with **Resene SpaceCote Flat** tinted to **Resene White Pointer** (stark off-white) on the ceiling and imported wallpaper.

Ed St focuses on its roots sourcing as much as it can close to home, an added incentive for locals who can enjoy a night out knowing that they are enjoying some of Franklin's finest produce.

Architectural Specifier: Franklin Architecture
 Building Contractor: Barry Mudgeway
 Interior Designer/Colour Consultant: Helen Shaw, Picturebook Interiors
 Painting Contractor: David Free Decorators
 Resene: Dean Blackwood, South Auckland Branch Manager; Mike Knee, South Auckland Trade Sales Representative
www.edinburghstreet.co.nz



look again

The philosophy for this Leichardt townhouse was to create an elegant space that showed some spunk, a bit of cheekiness and some frivolity with a touch of femininity. As with most townhouses there are pockets with very little natural light so it was critical to drag the natural light from other areas of the house into the heart, boosting the effect of natural light. The colour scheme had to work hard to bring out the features of the interior, which could have easily been lost in an all neutral colour scheme.

Take a close look and you can see the unique use of accent colour to highlight features that you normally wouldn't give a second glance. The firecracker bright stripe atop the walls, the striking deep tone frame and the surprising accent touches including the bold paint finish on the underside of the stairs.

The palette focuses on a white on white backdrop overlaid with an indigenous palette where burnt orange meets earth chocolate. Bold hues of **Resene Bullseye** (cherry red), **Resene Whizz Bang** (bright orange) and the depth of **Resene Monkey** (deep walnut brown) spark against neutral companions



Resene Alabaster (blackened white), **Resene Spanish White** (complex neutral) and **Resene Heirloom** (rustic light brown). The complete combination is unique with a contemporary handle.

Interior Designer: Barbara Bromley, Bromley & Tate Interiors
 Painting Contractor: Peter Geysing

park pride



When Midland Park came up for review, the council decided that a refresh was required including new lighting, drainage and widened access into the park. Originally built in 1983 on the site of the former Midland Hotel in Lambton Quay, Midland Park has to withstand damaging salt carried in by Wellington's notorious wind.

The removal of the existing steel canopy mounted lighting together with the enlargement of the Lambton Quay entry and the presence of corrosion resulted in the decision to repaint the existing curved structure. The original coating was stripped, then replaced with **Resene Uracryl** semi-gloss two pack acrylic urethane tinted to **Resene Scarpa Flow** (steel grey) from the **Resene Engineered**

Coating Systems range to tie in with Wellington City Council finishes for street furniture and lighting poles used throughout the city. The acrylic canopy was removed during the painting process then replaced once the coating system was cured.

To minimise disruption the work was carried out over the quieter Christmas period, providing park users with a post Christmas pick me up when they returned from holiday to find their refreshed park waiting for them.

Architectural Specifier: Charles Gordon, Wellington City Council Architects (www.wcc.govt.nz); Glen Wright, Stephenson&Turner (www.stephensonturner.com)

Building Contractor: Darren Hodson, Hawkins Construction (www.hawkins.co.nz)

Painting Contractor: Surfaceworks (www.surfaceworks.co.nz)
Resene: Craig Ell, Wellington Architectural Services Representative



bridge beauty

The New Plymouth Coastal Walkway meanders over 10kms along the coastline, offering something for walkers, rollerbladers, cyclists or runners. The Waiwhakaiho Pedestrian Bridge spanning just under 70 metres in length links the New Plymouth Coastal Walkway to the north.

To achieve the desired finish, the bridge was abrasive blasted, zinc metal sprayed and then finished with an **Altex Coatings** system of **Carboguard 504**, followed by a build coat of **Carboguard 636** and a finish coat of **E-Line 379** to keep it well protected against the corrosive coastal Taranaki environment.

The finished bridge has become an iconic landmark and has been awarded a gold prize for Natural Projects and Community Sustainability in the International Liveable Communities Awards.



Building Contractor: Whitaker Civil Engineering Ltd
Coating Contractor: TBS Coatings Ltd (zinc metal spray); Fitzroy Engineering Ltd (Altex Coatings system)
Designer: Novare Design Ltd
Fabrication: Fitzroy Engineering Ltd

paint wardrobe



It's a common enough experience to end up covered in blobs of paint after a good day painting, but quite a different undertaking to purposefully design and make clothing out of dried paint. But that's exactly the task that Madeleine Harman undertook as part of her Whitecliffe Design course studies.

Using predominantly **Resene Lumbersider** in a wide range of Resene colours, including favourite hues **Resene Wafer** (pink biscuit),



Resene Sour Dough (beiged neutral) and **Resene Cashmere** (dusty coral pink), Madeleine created Resene paint films that were then cut and crafted into clothing. To complete the look the shoes were also dunked into the paint for a top to toe matching ensemble.

Made as they are from waterborne paint, the finished paint films are quite elastic, enabling the model to move around freely while dressed in paint.

Designer: Madeleine Harman

colour corner



The Corner Bar at Hotel DeBrett has been a favourite drinking spot for city workers and weekend revellers for many years. Following the upgrade of the adjacent 25 bedroom boutique hotel, the owners took the lease back and carried out a refurbishment of the bar to bring it into line with the hotel upgrade. It was important the character of the bar was recognisable to the regular clientele, and that the footprint be retained for planning reasons. The bar and its equipment had long passed its best, so this was replaced with a new more inviting and open timber, chrome and mirror tiled version, with additional coffee making facilities and a colourful collection of vintage and new perspex pendant lights. The existing timber floor was retained and refinished, the doors and windows opening out onto Shortland Street overhauled and the ceiling relined to provide additional soundproofing to the hotel above.

The interior and exterior furniture was replaced with new colourful lightweight pieces, metal for the exterior and upholstered bentwood for the interior. The tables were purpose made to ensure the guest space was not compromised. The high level windows had a colourful mondrian patterned film applied to create a more intimate interior, which helps the bar stand out from its neighbours in this busy central city location.

Behind the scenes, a new kitchen serving bar food was fitted out, along with new sound and lighting systems. Resene paints have been used throughout the new interior and on the façade of the building. The combination of **Resene Mahogany** (mature deep red) and **Resene Tall Poppy** (deep red) is striking on the interior. Resene waterborne enamel finishes, **Resene**



SpaceCote Low Sheen (walls), **Resene SpaceCote Flat** (ceiling) and **Resene Lustacryl semi-gloss** (trim and joinery) are ideal in high wear and tear areas such as the Corner Bar, as they combine a durable finish with low VOCs and low odour, minimising disruption to the normal bar operations.

The Resene paint finishes have been combined with a random collection of vintage posters. Wrapping papers also adorn the walls and the bathroom houses a collection of local art gallery invites. All in all it's a clever combination of memorabilia, hue and design that welcomes in patrons for a warm and friendly respite from the busy city that awaits at the door.

Architectural Specifier: Martin Hughes Interior Associates
(www.martinhughesdesign.com)
Building Contractor: Cyclops
Interior Designer: Michelle Deery and Stewart Harris
Painting Contractor: Sharp Decorating Services Ltd
Photographer: Joseph Roque



1800 and counting

Power boxes seem to have magnetic effects, as no matter what city they are in, they seem to attract taggers. There are a number of projects underway to beautify power boxes with works of art to deter graffiti. These programmes are incredibly successful with reports from most areas that once a box is artistically painted it is not graffitied again.

Resene Lumbersider low sheen waterborne paint is very popular for painting power boxes as it's durable, quick and easy to apply and available in the handy testpot size, which is ideal when the design calls for multiple colours. These days many artists simply buy the finished mixed Resene colours, which saves them a lot of time and effort having to mix up their own custom colours.

One of these programmes, run by the **Urban Smart Project** team, has been especially busy with over 1800 power boxes painted to date covering a wide range of themes and Resene colourways. The 1800th artwork titled Remembrance was painted by Frances Rowland Wregg and features Rosemary for Remembrance, which is planted in the Centenary Memorial Gardens, a field of Poppies as the symbol of The Great War and hats on stylised service personnel to remember their loyal services.

Artists and community members have the opportunity to offer their services to paint a box in their local community. All designs are checked and approved prior to painting. Artists are then delivered everything they need to get the project underway – all they need to do is add their imagination, artistic talent and a good patch of fine weather.



Organiser: Urban Smart Australia

BrushStrokes

QR shortcuts

To help connect decorators to the information they need when they are decorating, you'll start to see new **QR codes** appear on Resene labels and in some of our printed materials. A QR code is a quick way to get you to the information you need, without the hassle of typing in a web address or having to go hunting for the right page on a website.

QR codes look like the pictures below right. If you try these ones out you'll go to the Aquaclear data sheets.

To 'read' a QR code you need a smartphone with a QR code reader. Some smartphones come with QR code readers already installed, if not there are plenty of free readers online like <http://reader.kaywa.com/> – just google 'free QR code reader' and you'll have plenty of options.

Once you have a QR reader on your smartphone, use it to view the QR code and it will take you direct to the relevant web information. We are adding them to our labels to provide a quick link to the product data sheet and the safety data sheet for a product.

If you don't have a phone compatible with a QR reader you can still access the data sheets using your phone, iPad or Android web option. Just click on the Data Sheet link from the Resene home page and then you can click onto any data sheets you want to use or use the quick link at the top to go to the Safety Data Sheet index.

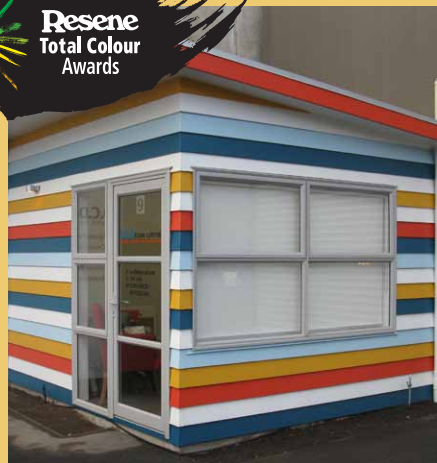
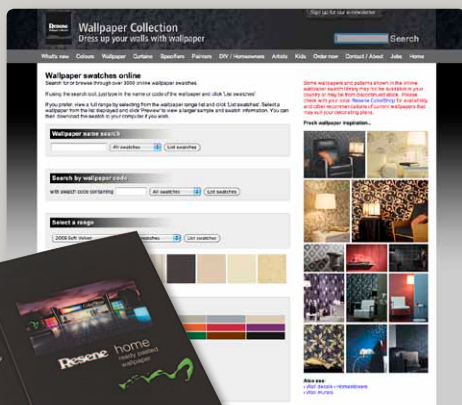


home sweet home

Following the success of the exclusive Resene collections, the new **Resene Home** and **Resene Habitat** collections include a carefully selected range of well balanced wallpapers presented in a soothing palette of neutrals accented with fashion colours, ideal to work with existing room elements or to form the base of a new colour scheme.

Complement your favourite wallpaper with your favourite Resene colours for a complete interior look.

View the Resene wallpaper online at www.resene.com/wallpaper or at your local Resene ColorShop and selected Resellers.



Resene
Total Colour
Awards

win a colourful award

Show your true colours and receive the recognition you deserve – enter the Resene Total Colour Awards 2012!

At Resene we're proud of our colours and we're also appreciative of our professional client's superbly creative use of colour in homes, buildings and related products. The **Resene Total Colour Awards** recognise outstanding use of colour. We want to celebrate the best of the best.

Categories include: Residential – Interior, Residential – Exterior, Commercial – Exterior, Commercial – Interior Public/Retail, Commercial – Interior Office, Landscape, Education, Product/Display, Rising star – Student, Lifetime achievement.

Commercial includes commercial, corporate rebranding, industrial, government sector.

We showcase a wide range of entries each year on the Resene website in the Resene Total Colour Awards gallery and include many projects in Resene media throughout the year. For the colourful winners, each category winner will win NZ\$1000 and a coveted Resene Total Colour sculpture and the overall Nightingale winner will win NZ\$5000 and an exclusive Resene Total Colour – Nightingale Award sculpture.

Entries are now open. Make sure yours is in by 30 June 2012. See www.resene.com/colourawards or your Resene representative for entry details.

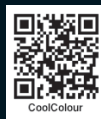


cool it

The local White Roof movement is focused on gaining awareness of the benefits of white roofs and encouraging people to either paint their roof white, or if they can't do that due to local council restrictions or similar then to paint their home's roof in a **Resene CoolColour** to reflect more heat and reduce heat build up.

Internationally, the white roofs concept has been taken to new heights with a Peru team working hard to paint their mountaintops white in an effort to cool the surface and encourage ice to form on the mountain. One of the winners of the '100 Ideas to Save the Planet' competition, the sheer scale of area to paint makes it a very ambitious project.

When you're planning exterior projects, there are two good options to reduce heat buildup in your exterior paint system – either opt for white, or if white isn't an option use a **Resene CoolColour**, formulated with special pigment technology to reflect more of the sun's energy keeping the surface cooler. **Resene CoolColour** technology is available in a wide range of exterior paints, stains and colours.



on top

Resene Summit Roof is a popular waterborne satin roof paint available in a wide range of colours including Resene paint matches to popular **COLORSTEEL®/COLORBOND®** colours plus a whole host of Resene colours.

With a recent formulation change, the Aluminium tone is moving to a direct to substrate formulation, suitable for application direct to substrate on some surfaces and recommended over a suitable primer/sealer on other surfaces.

The **Resene Roof Systems** chart has also been updated and now includes the new colour **Resene Navigate** to offer another nature inspired roof colour option. **Resene Summit Roof** can also be tinted to a range of **Resene CoolColour™** colours to help reflect heat keeping the coated roof cooler. See the new Resene Roof colour systems colour chart for popular roofing colours including the **Resene CoolColour** colour options.

The **Resene Roof Systems** chart is available from Resene ColorShops and Resellers or you can order your copy free online from www.resene.com/specifierorder.



wallpaper trends for 2012 and beyond

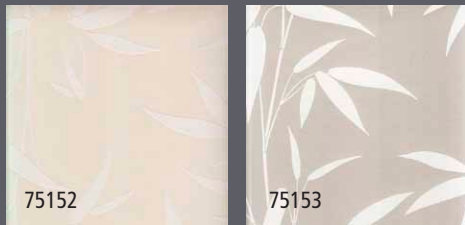
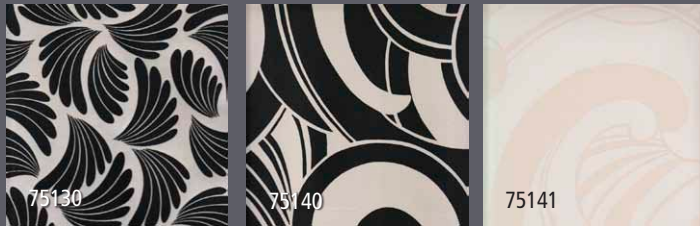
From classic to contemporary and sophisticated to playful, wallpaper is back in a big way. Advances in modern technology mean our choices of colour and design elements are enormous. Patterns are sophisticated, yet they form part of a wallpaper system that coordinates colours, textures, even fabrics. In these modern times, wallpaper is all about making a statement – a statement that's no longer reserved for our smallest rooms.

Bold patterns, interesting textures, metallics and paintable papers are hot for 2012, but feature walls remain the key trend.

Botanicals are still very popular, with flowers and plants of all sorts making the grade. Large sophisticated silhouettes (25220) through to dainty flowers offer pure glamour or classic sophistication. Wind-rustled bamboo (75153) and larger-than-life leaves whisk you away to the sunny tropics.

Locally inspired botanicals are creeping through too. The **Resene WallTrends II** collection offers a selection of textured koru-design prints in a number of colourways – a rich black on a silver metallic background (75140) through to a subtle cream on a pale beige metallic background (75141).

An embossed fantail design in black on silver metallic background (75130) also features in the collection, quirky and playful, but still elegant. Or bold stylised leaf designs reminiscent of the childhood bach, in colours of rustic red and concrete grey (25202), or deep purple, corn yellow and henna brown (25202).



While floral femininity remains a strong trend for the season, moody sophistication and masculine persuasions are coming through.

The combination of geometric patterns and

vivid colours typically generates a strong energy, creating a sense of vibrancy without overpowering. The same goes for very intricate patterns (46030), as seen in the Chacran collection. Many are tone on tone, which creates a more subdued look for busy patterns.

Likewise, The Gardens of Amsterdam's collection has a number of very detailed designs – many classic or retro inspired, such as vintage florals (46161) and motifs, one depicting ceiling roses (46101) and another iron gates (46192). There's even a fern-covered wallpaper (46181) to remind us of home.

Stripes are a hot option, both in bold or softly elegant tones. Grey is a prominent colour, reminiscent of days gone by, but you'll see it juxtaposed with contemporary hues such as orange (1508-13), turquoise, mustard green and salsa red. A modern twist from the Schoner Wohnen 2 collection is a stylised vine and berries pattern (1506-15), essentially stripes (the vine) mixed with curves (berries).



Textures continue to be a trend, with flock papers very much in fashion. Flocking is a process by which small fibres are applied to an adhesive-coated surface, making the paper look and feel like

velvet. Typically, flock wallpapers carry large floral or damask designs, as seen in the Flock collection, with fleur-de-lis (5514-67), roses (5515-42) and other botanicals (5543-52) a highlight. A new twist has seen striped (5513-37) and retro optic (5519-24) patterns emerge too, all with a velvety texture to the touch.



Besides flocking, texture is finding its way onto wallpaper in other ways. Grasscloth speaks to our passion for sustainability. Manufactured using natural fibres of jute, reed and arrowroot, these nature-inspired papers add warmth and texture to a room, whether in a formal or informal setting, in traditional or contemporary styles.

Grasscloth was originally a product of the sixties and seventies, but today's versions have a broader, fresher look with a more sophisticated range of colours. Choose from earthy tones, like natural mid-beige and muddy red (21410), to creams and whites, grassy greens and browns (22118), or blacks and chocolate browns. Try one with a hint of glitter, where silver twine is interweaved with natural colours. (22117).

Another echo of the past are the paintable papers, which hark back to the days of Anaglypta. A roaring success of olden days, these uncoloured, embossed wallpapers have once again surged in popularity.



Anaglyptas range from light to heavily embossed patterns, from floral to geometric, in classic designs – stripes, herringbone, stippled or grasscloth-like – to more contemporary koru-like swirls (Painton 27001). Look for these in the Resene collections and the Painton range. They're perfect for those who want the monochromatic look but with added texture and their favourite Resene colour, and they do wonders in covering surface imperfections that would normally show through in flat wallpapers.

Undoubtedly metallic wallpapers add decadence to an interior's colour scheme, generating an opulent ambiance with colour accents in golds, coppers, rich



bronzes and silver. When light falls on these sumptuous papers they come shimmering to life.

Many of the new wallpaper collections are devoted to this look, with Schoner Wohnen II's collection ranging from shining leaf and vine prints (1514-45) to classic stripes (1519-19) and cracked earth effects (1518-27). Brocante combines metallics with texture and padding (45965), as well as super-sized florals with cream and pearl lustre for pure romance (45922).

The metallics shine through in Resene WallTrends II as well, both in the elegant fantail (75131) and bamboo (75152) designs.

The wallpaper world really is your oyster. Get inspired with the extensive range of wallpaper on display at your local Resene ColorShop or reseller or view the online Resene wallpaper library, www.resene.com/wallpaper. Some designs available NZ only.



catwalk of curtains



1

A veritable array of fashion and classic curtains have been released as part of the new **Resene Curtain Collection**, alongside new colour options in a selection of the existing designs.

The **Resene Curtain Collection** is a range of exclusive fabrics designed to complement popular Resene colours. The selection includes contemporary and classic stripes and designs to complement a wide range of colour schemes. The new collection also includes cushion options ideal for those wanting to complement their curtains with cushions, or for those who want to add a quick and easy extra touch of colour and design to complement their walls (available in NZ only).

Specifiers are eligible for special discounts on the Resene curtain collection range, including the new cushions. Check with your local Resene representative or Resene ColorShop for details.

Here's a taste of some of the new fabric options:

1. Resene Lyrical: Flax is the magical ingredient in this trend-forward fabric giving an earthy grainy look to a metallic all-over design. The effect is like no other and will create a stand-out look for your windows.

2. Resene Designite: Tonal sheen in a classic woven jacquard with high design definition and luxury looks. Contemporary colours lift Designite into today's most wanted palette.

3. Resene Tease: The drama begins with this outstanding design where two of the most wanted shades, red and charcoal combine in a strong stand-out design. For the less adventurous there is the more tonal Charcoal colourway.

4. Resene Beacon: You can be outrageous with Flame or more reserved with Stone and Hydra but either way this is a dramatic design statement. Beacon has all the design attributes of leading European influences including the matte woven finish.

5. Resene Wildlife: Linen looks with a clever interpretation of the botanic trend in stylish chenille. From cut pile to twisted weaves, Wildlife has outstanding surface and textural interest. A rich colour palette enhances the effect.

6. Resene Ripple: Raised vertical self-stripe with a dramatic contemporary twist, Ripple creates a tone-on-tone sheen with an almost padded effect in sleek neutral colourways.

7. Resene Maze: Smooth and silky with incredible draping qualities, Maze gives a bold abstract design the soft treatment. Woven texture effects and a metallic sheen make this a very contemporary fabric.

8. Resene Verdant: A strikingly effective botanic design is woven into a textured and shaded background for a rich subtle fabric. Softly draping sheen surface for luxe looks.

9. Resene Influence: The shadows and highlights are woven into this fabric with the amazing effect of an embroidered circle design in wide vertical stripes. Broken up with a 'ruched' fabric stripe, the metallic colours will add totally luxe looks to any room.

10. Resene Captivate: Very different; very effective; Captivate combines the surprise element of abstract embroidered panels with the soft sheen of a silk slub, in colours that will truly captivate and inspire.

11. Resene Frequency: Cleverly constructed with a raised ribbon effect, Frequency has the added interest of a woven tonal or contrast self-spot following the twists and curves. Subtle sheen with a slight slub gives a silk effect and adds texture.



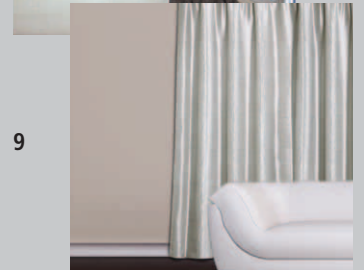
6



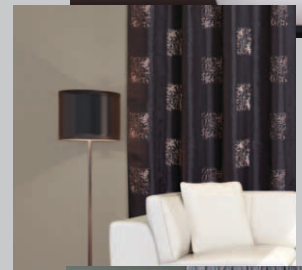
7



8



9



10



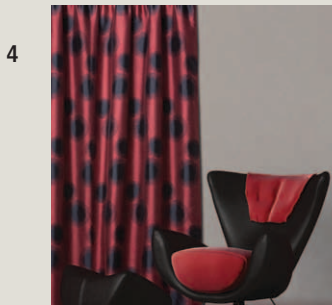
11



2



3



4



5



Curtains

correction: The exterior of the Westport Sports Centre provides a welcome sight for sports lovers. Our apologies for the incorrect exterior image shown in the last newsletter. To view the full story see the Resene website.



Resene. Licensed products since 1996



the paint the professionals use



Mr. N.O. Whereman
1 Don't Know Road
Nowheresville



SENDER: Resene Paints Ltd, PO Box 38242 Lower Hutt 5045

Incorrect mailing: If you are receiving multiple mailings or you would like us to change your mailing details, please call: In Australia phone 1800 738 383, in New Zealand phone 0800 RESENE (737 363) or email update@resene.co.nz.