

In Australia, PO Box 785, Ashmore City, Queensland 4214
Call 1800 738 383, visit www.resene.com.au
or email advice@resene.com.au

Resene
the paint the professionals use

In New Zealand, PO Box 38242, Lower Hutt 5045
Call 0800 RESENE (737 363), visit www.resene.co.nz
or email advice@resene.co.nz



surfs up

Surfing has come indoors with the opening of the Wavebox in Arrenway Drive, Albany, an entertainment venue that offers a mechanical wall, free fall, climbing wall, artificial wave ride and pool tables along with enough food options to keep you topped up with energy so you can try out all the options.

And the wall work is as inventive as the entertainment options. The overall theme for the Wavebox paintwork was to focus on 'all things surf and water'.

The climbing wall murals are one of the first things you see as you walk into the building so the aim was to keep them fairly smooth. Starting from scratch the plywood wall was prepared and after a lot of hole bogging and sanding, it was ready for priming with Environmental Choice approved Resene Quick Dry. Working from a scissor lift the background was sprayed top down using Environmental Choice approved Resene Lumbersider low sheen waterborne paint. All the detail was then freehand airbrushed, requiring considerable patience and time.

Once complete the entire area was sealed with Resene Uracryl GraffitiShield, a waterborne two pack clear anti-graffiti finish, which also

doubles as a durable coating to protect the work from wear and tear.

The Skytower climbing wall constructed using concrete half pipe was sealed with Resene Waterborne Smooth Surface Sealer then topcoated in Resene Imperite I.F 503 Silver Aluminum. The Lighthouse climbing wall was prepared the same way then topcoated in Resene Uracryl white applied by roller with airbrushed detail in Resene Lumbersider.

Other murals feature on the generator room and upstairs, each finished in Resene Lumbersider before overcoating in Resene Uracryl GraffitiShield.

The floor area is finished with Resene Non-Skid Deck & Path, an attractive and comfortable grit texture finish that reduces the risk of slipping, especially important in a venue focused on all things surf. And to complete the surf scene, clouds airbrushed using Resene Lumbersider are scattered across the walls.

Avid surfers can now enjoy their favourite sport long after the sun has gone down, beginners can learn the basics without the risk of rogue waves or rips, and those who want entertainment without getting wet can try the climbing challenges.

Contractor/Artist: Jonathan Grange, Impact Art (impactart@xtra.co.nz)
Resene: Ben Solly, Auckland North/West Branch Manager,
Albany Colorshop



lifesaver



Architectural Specifier: David Hill, Wilson & Hill Architects Ltd
Main Contractor: James Mackay Builders Ltd
Painting Contractor: Wayne Simpson Painting Contractors Ltd
Resene Representative: Haydn George, Christchurch
Architectural Services Representative

The Chair, a new lifeguard tower at Woodend Beach may not be the biggest project, but it's certainly memorable. It is also an award winner. Designed by Architect David Hill, who had patrolled the beach as a surf lifesaver in the 1980s, it has won a Canterbury Architecture Award.

The marine ply cabin is finished in **Resene TimberLock** to preserve the timber, **Resene Wood Primer** and two coats of **Resene Lustacryl** semi-gloss waterborne enamel tinted to **Resene Tulip Tree** (ruddy yellow gold), **Resene Bright Red** (pure red) and **Resene Black White** (grey white). The galvanised steel box supports were degreased then finished in **Resene Armourcote 510** and two coats **Resene Uracryl 402** urethane for maximum protection from the harsh environmental conditions and salt spray.

With a challenging site to work with, it was constructed and painted off site, then taken to the beach at low tide and craned into position. The structure needed to be relatively maintenance free due to its isolated location.

It is manned for just six weeks of the year and is designed to accommodate three lifeguards. The tower is accessed via a ladder that the lifeguards collect from the neighbouring camping ground each morning and carry over the sand dunes.

As it is unused for 46 weeks of the year, the tower has been designed to resemble a large deck chair – a piece of oversized beach furniture that acts as a piece of sculpture in the landscape.

Awards jury convener Stephen Crooks said the project was a "simple but brilliant concept, superbly executed. You can't help smiling when you see this little building sitting amongst the windswept dunes."



designer white

A colour wheel of white adorned with coloured vinyl was created by Essenze as part of their 'Colour New Zealand' concept.

Resene Quick Dry followed by **Resene SpaceCote Flat** white was applied to provide a luxurious matt finish, the ideal backdrop for the vinyl colour reflections needed to achieve the desired illuminated colour effect. These Environmental Choice paint systems are both quick drying and very low odour, which was critical with the wheel needing to be painted on site and just in time for the exhibition.

www.essenze.co.nz



As anyone in retail will tell you, retail spaces need to always be changing, there should always be something new for customers to look at.

At IKEA, change is a proven technique to keep the stores 'vital' – to provide inspiration and smart solutions, create visual impact and of course, present the range to customers.

And key to this is the store entry – often creating a mood and feel for the store before the customer has even seen a product.

This small galley kitchen was positioned right inside the main door of IKEA Logan for almost six months, and proved so popular that the rug had to be repeatedly replaced from so much traffic. IKEA took a basic kitchen design and added **Resene Shapeshifter** (silvered blue) on the walls, adding drama and uniqueness, while still keeping to their style groups for continuity.

The kitchen has now been dismantled and donated to a Theodore resident whose own kitchen had been destroyed in the Queensland floods.

Stylist: Louise Proudfoot, Activities Specialist, IKEA Logan
www.ikea.com.au





city jump

Anyone who has been out on the town in the last few years in Wellington will instantly recall the Coyote Bar nestled in the heart of town on Courtenay Place pumping with energy late at night. After all a bar with a huge uncovered outdoor area is very memorable, especially when it's pouring.

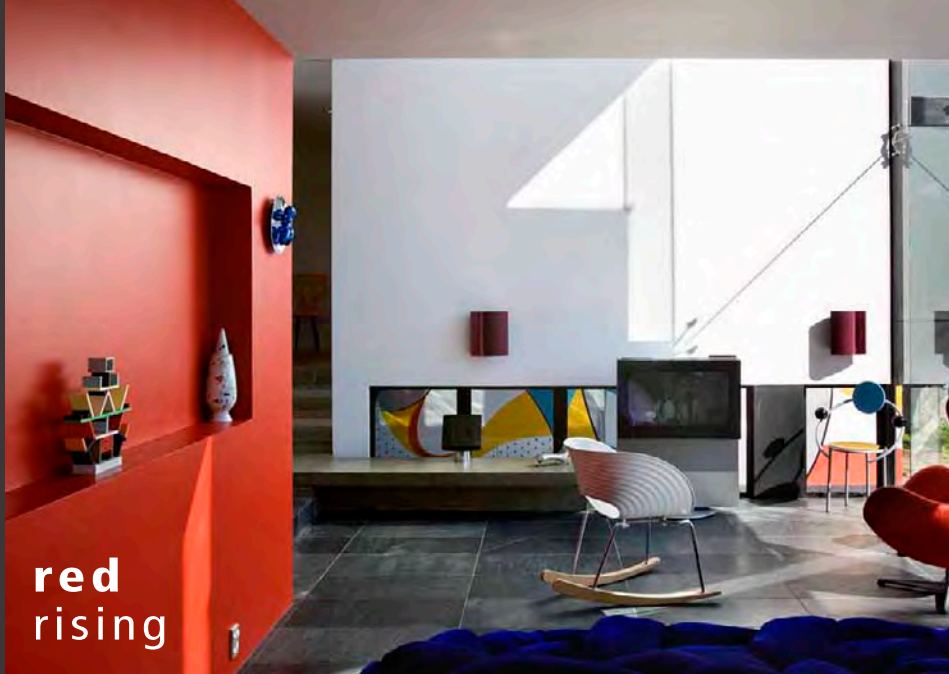
With such a superb location to work with but with a need to provide a more all weather option, the new Bangalore Polo Club Bar and Restaurant includes an outside bar area with retractable roof. On fine summer days, patrons relax in the sun and when the weather turns bad the roof provides ample protection from the elements.

Once based on the River Avon in Christchurch, this bar and restaurant was forced to find a new home when the earthquakes devastated their original historic building premises. Rather than try and find another location in Christchurch, they jumped cities to Wellington for a fresh start.

The redevelopment of their new site was extensive. The exterior street facing PBS Eterpan tapered edge substrate is now finished in a Rockcote jointing system with Rockcote Classico texture. **Resene Hi-Glo CoolColour** is also used on the exterior for a high gloss waterborne paint finish. On the interior of the outdoor bar area joints are finished in Rockcote Multistop followed by **Resene Sandtex**, a Mediterranean effect finish.

With a fresh new city and a fresh new start, Bangalore Polo Club Bar and Restaurant is a great example of how dealing with adversity can make you much stronger.

Architectural Specifier: Bevin Slessor Architects
Interior Specifier: Skyring Design
Painting Contractor: Carl Jackson Properties Ltd



red rising

Working with an existing 1960s home designed by the celebrated modernist architect Vladimir Cacala, the design intention of this renovation was to provide modern living necessities while disturbing the existing house as little as possible.

The only exception was the kitchen, which was moved to allow this larger space to be used as an adaptable second living room, games room or as office studio space

Resene Flame Red (bright red) rises as a feature to the ceiling but everything else is more grounded to earth, providing a natural sense of domination. Unexpectedly, because of that domination it draws you into other elements in the space. The exciting bold use of colour integrated with the use of the recess and the play of shadow gives

extra complexity and breaks the continuity of the colour. The red is joined by a more subdued greyed off colour palette using **Resene French Grey** (lavender grey) and **Resene Ship Grey** (mid grey) and a white backdrop.

Published in an issue of the international journal *Architectural Review*, it is a fine example of modernist domestic architecture in Auckland, and more recently the deserving winner of the **Resene Total Colour Residential Interior Award**.

Architectural Specifier: Daniel Marshall Architects
(www.marshall-architect.co.nz)
Building and Painting Contractor: Grace Brothers,
Gracewood Construction



double duty

Fancy a wall you could write all over and stick magnets to? This Nelson project shows that you can combine the two with basecoats of **Resene Magnetic Magic**, followed by topcoating in a Resene neutral before overcoating in **Resene Write-on Wall Paint** to give a very handy and practical large scale magnetic whiteboard wall.



traditional twist



Nestled into the Hunter Hills, Holme Station Homestead is one of Canterbury's best kept secrets. Founded in 1864, the 10,000 square foot homestead was originally the heart of one of the first and largest pioneer farms, commanding over 80,000 acres and running over 42,000 sheep. The centre of the local community, Holme Station was the scene of numerous balls, hunts and various music and social events that defined the Victorian age in local agriculture.

The original Homestead was sadly burnt down in 1910 and the replacement homestead was built by the Elworthy family in 1912 using a Lutyens Arts and Crafts style. The homestead is a sister property to the Royal Sydney Golf Club.

The current owners purchased the homestead in 2002, when it was in a state of disrepair, with a desire to restore it to its original grandeur and capture the ambience of days gone by while ensuring that their modern guests should also enjoy all the finest luxuries of the modern age. Today the homestead sits comfortably in its own 17 acres of landscaped gardens, offering a haven for up to eight couples to enjoy a birthday, wedding or family retreat.

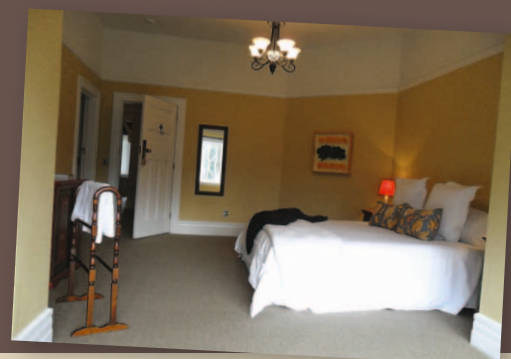
In keeping with the traditional style, the colour palette also reflects the rich tones of the era, with **Resene Lusty** (rich orange red) in the dining room, a bedroom in **Resene Tuscany** (dusty orange terracotta) and another in **Resene Putty** (strong cream), soothing tones of **Resene Spanish White**

(complex neutral) in the library and pool rooms and the warm soft **Resene Half Merino** (milky off-white) on ceilings. All wall areas are finished in **Resene SpaceCote Low Sheen**, a tough washable waterborne enamel, ideal for high wear and tear and guest areas.

Luckily Holme Station has sailed through the earthquakes with very little damage. The owners put this down to the strength of the original design elements dating back to 1912 as well as the modern reinforcing, which was built in during the 2002/03 refurbishment.

For guests, a visit to the Holme Station Homestead is a welcome escape from city life and a chance to immerse themselves in traditional style while still enjoying the best of today.

Painting Contractor: Paul Simpson, Decor Wise Painting and Decorating
Resene Representative: Melanie Tracy,
South Canterbury Trade Sales Representative
www.holmestation.co.nz



sporting gift



Thanks to a generous one million dollar donation from Solid Energy towards a new sports and leisure facility, the Solid Energy Sports Centre in Westport has become a key part of the local community. Solid Energy is one of the biggest employers in the region and chose this project with others as a way to give back to the community.

The striking sports and leisure facility includes an aquatic centre, netball courts, squash courts, an artificial hockey surface and fitness centre. It is home to many local sporting organisations and is used by schools as part of their physical education, sport and leisure programmes.

With Villaboard panels finished in clear **Resene Multishield+** specified for much of the interior, over 500 litres of this clear finish was needed to complete the whole project. The clear finish made way to a painted finish courtside, with the plasterboard walls finished in **Resene Broadwall 3 in 1** followed by **Resene Zylone Sheen**. **Resene Broadwall 3 in 1** is a spray only sealer and surfacer that offers rapid turnaround times, increased efficiency and an improved surface for topcoating. The main stadium

walls were finished in **Resene Wafer** (pink biscuit), the foyer in **Resene Pot Pourri** (dusky pink rose) and **Resene Foam** (pastel blue), the fitness room in **Resene Energy Yellow** (bright yellow), **Resene Hypnotic** (celery green) and **Resene Quarter Spanish White** (light neutral) and the changing rooms in **Resene Quarter Spanish White** topcoated in **Resene Multishield+**.

The two new squash courts were both finished in **Resene Squash Court Coating** while the laminated beams in the pool complex were finished in **Resene Uracryl 402** for a tough durable finish.

Outside, **Resene Waterborne Woodsman** tinted to **Resene Ironbark** (brown) and **Resene Uracryl** were used for aesthetic appeal and to protect the exterior substrates from the elements.

The finished centre is an impressive community asset and a hive of sporting activity; a very special gift that this community can enjoy and be proud of for many years to come.

Painting Contractor: Dave Carmine Ltd
Resene: Bryan Newman, Blenheim Trade Sales Representative



eco office

The Stephenson&Turner Wellington design studio was well and truly designed with sustainability in mind, with the fitout being awarded a 6 Star Green Star Interiors rating by the New Zealand Green Building Council and receiving the Resene Total Colour Sustainable System Award.

The studio was the first historic building in New Zealand to be awarded a 6 Green Star Office Interiors rating, the highest level attainable under Green Star, representing world leadership.

The design focused on using existing materials and colours. The concrete, brick and timber set a wonderful canvas for a working environment.

The aim was to design studio space, which invigorated new life and culture. After a number of detailed trial layouts they decided to break free from current open plan office norms and create a space that encouraged the highest levels of group communication. Down came the screens that normally separated individuals, down came the disciplinary divides: until all that was left was a cohesive team.

The meeting rooms, located on axis with the main entrance, are the only built spaces in the fitout. They offer extremely high levels of acoustics and feature large flush pivot doors, which disappear into the wall when closed. The meeting rooms 'float' below the existing shell, playing with the idea of old vs new. Clients enter directly into the creative environment of the studio and can be actively involved in the design process.

The Café space was an important part of the design scope for it offers employees and visitors a relaxing space where less serious conversations and more sociable interactions can take place. This space incorporates a floating linear kitchen transitioning into a well established design library, the ideal place to have a coffee or meet a client.

The studio fitout features sustainably harvested and reused timber, daylight addressable lighting, natural



ventilation, eight operable skylights, heat-pump and radiant heating as well as a green wall and strict use of Environmental Choice approved low VOC paints and adhesives.

The colour palette of **Resene Half Alabaster** (blackened white), **Resene Half Spanish White** (complex neutral) and **Resene Half Wan White** (winter neutral) provides a fresh yet soothing backdrop to the creativity. These colours were joined by clear finishes on natural substrates, to bring out the best in the materials and make them easier to keep clean while also protecting them long into the future.

The wide range of Environmental Choice approved Resene products meant there was little restriction in the project. **Resene Zylone Sheen** low sheen waterborne paint was used on wall areas with ceilings in **Resene SpaceCote Flat** and trim and joinery in **Resene Lustacryl** semi-gloss waterborne enamel. These were joined by **Resene Aquaclear** as a clear finish over timber and **Resene Cemseal** as a clear finish and dust coat over concrete.



The result is a fresh, comfortable, open working environment all carefully designed with the intention of promoting health and well being to employees.

Architectural Specifier: Stephenson&Turner Ltd,
www.stephensonturner.com
Building Contractor: Mainzeal Interiors Ltd
Painting Contractor: Withers Painters Ltd
Resene: Craig Ell, Wellington Architectural Services Representative
Photographer: Paul McCredie

black meets white



Is this Australia's largest commercial colour glass order? At over 2000 square metres, we think it just might be!

Coloured glass wall panels backpainted in **Resene White** and **Resene Black** were a key element in the Westfield Sydney City refurbishment and upgrade. The sheer scale of the project was immense with

322 square metres of coloured glass wall panels measured, manufactured and installed in the busiest week. The architect was supplied finished samples of the Resene finish on glass, using GCP Paints made by Resene, which were then approved and used as a standard for the entire project. The end result is simply stunning.

Client: Westfield
Coloured Glass: DecoGlaze® (www.decoglaze.com.au) using GCP Paints
(www.gcppaints.com.au) made by Resene
Supplier: Prestige Joinery



BrushStrokes



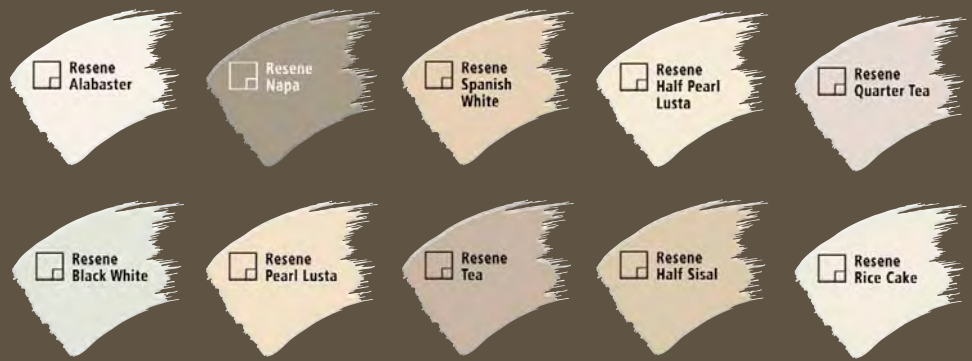
white wood

New to the **Resene Woodsman** exterior woodcare range is **Resene Woodsman Whitewash**, an exciting new way to achieve a whitewashed style effect on exterior timber.

Resene Woodsman Whitewash is low in VOC compared to solventborne exterior stains and polyurethanes. It's easy to apply and suitable for use by professional decorators or home decorators.

Resene Woodsman is also available in a range of other colours from traditional timber colours to brights. You can also get it tinted to many **Resene Colorwood** colours for a consistent colour palette inside and outside your project.

See Data Sheet D57W for more information on **Resene Woodsman Whitewash** and Data Sheet D57a for more information on **Resene Waterborne Woodsman**. For a whitewashed finish inside use **Resene Colorwood Whitewash**, see Data Sheet D50W. The **Resene Woodsman** range is available from Resene ColorShops and resellers nationwide.

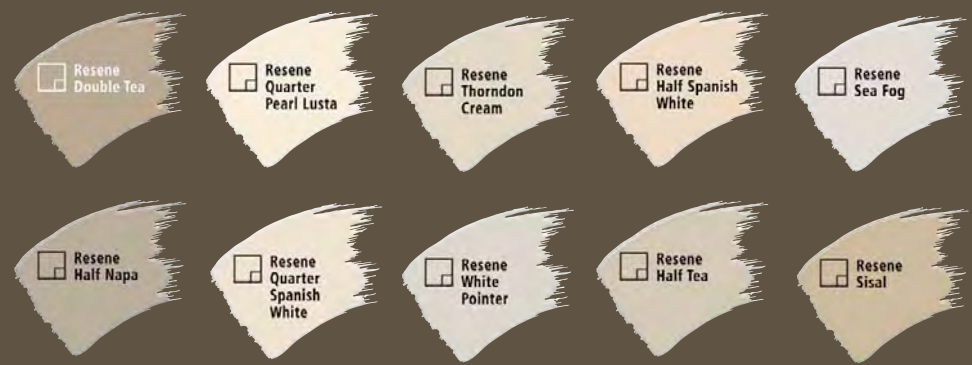


top 20

We're always asked what the most popular Resene colours are. The **Resene Top 20** colours features a range of popular Resene whites and neutrals, ideal for your projects inside and out accented by stronger and brighter hues to lift the colour scheme. In line with current colour trends, green edged neutrals are rocketing up the list, with **Resene Thorndon Cream** breaking into the top 20 list for the first time.

See the **Resene Whites & Neutrals** colour chart and **The Range Whites & Neutrals** for a great range of popular Resene whites and neutrals hues.

1. Resene Tea
2. Resene Half Tea
3. Resene Quarter Tea
4. Resene Spanish White
5. Resene Alabaster
6. Resene Half Spanish White
7. Resene Black White
8. Resene Pearl Lusta
9. Resene Quarter Spanish White
10. Resene Half Pearl Lusta
11. Resene Sea Fog
12. Resene Napa
13. Resene Double Tea
14. Resene White Pointer
15. Resene Half Napa
16. Resene Quarter Pearl Lusta
17. Resene Sisal
18. Resene Rice Cake
19. Resene Thorndon Cream
20. Resene Half Sisal



project protection

New to **Resene Uracryl GraffitiShield** is a semi-gloss clear finish providing a choice between the existing gloss option and the new lower sheen semi-gloss variant.

Unightly graffiti is a nightmare for property managers in graffiti prone areas. Worst of all, not only does it look bad and cost money to fix, but the longer you leave it the more likely it will attract more graffiti.

Traditionally anti-graffiti protective coatings have been full of solvents. Keen to provide a lower VOC option, Resene has developed **Resene Uracryl GraffitiShield**, a high performance waterborne two pack urethane designed to provide a clear protective finish as a defence against graffiti. Once cured, if graffiti does occur, it can be removed using **Resene Graffiti Cleaner** without the need to repaint the area. Ideal for use on businesses, homes and buildings that are prone to graffiti.

Newly reformulated **Resene Graffiti Cleaner** is free of NMP and is formulated for effective and easy removal of graffiti and is very effective against common materials used for graffiti, such as spray paint, inks, crayons and lipsticks.

Graffiti is often called a gateway crime – left unaddressed, taggers often progress to more serious crimes, so it pays to have an anti-graffiti plan in place to tackle any graffiti promptly otherwise the problem will likely escalate.

See Resene Data Sheet RA58 for more information on **Resene Uracryl GraffitiShield**.

When developing a design for graffiti prone areas also consider:

Planting shrubs or a tree against walls and fences exposed to tagging or plant climbing shrubs or hedges. Species with prickles provide additional protection.

Painting fences and walls standard colours because unpainted fences act as magnets to taggers.

Installing security nightlights in possible graffiti prone areas. Lights with motion sensors are a popular choice as they only activate when a person approaches.

For more ideas on dealing with graffiti, see www.graffitifree.co.nz.





refreshed

The Resene Whites & Neutrals flat chart collection and the Resene Decks, Paths, Driveways and Recreational Areas colour charts have both been updated to reflect the latest colour trends. In the neutrals there is an upswing in green toned hues, while we're seeing more and more variants of grey for trafficable areas. The new colour charts will come through into Resene ColorShops and resellers as the old charts run out.



contemporary touch

Following the international success of the Saphyr collection the second Saphyr range is now released. Updated classics meet geometric 3D patterns to add a contemporary touch to your walls. The accompanying plains are well balanced and coordinating so you can create a complete look from striking confident bold designs that draw in attention to subtle designs that provide a soothing backdrop to the room.

Complement your favourite wallpaper with your favourite Resene colours for a complete interior look.

View over 6000 wallpapers on the Resene website at www.resene.com/wallpaper, on your phone or iPhone with Resene iSwatch, www.resene.com/iswatch or at your local Resene ColorShop.

woodwork

The Resene Exterior Woodcare collection has been refreshed, expanding the product information and including a handy table showing you what product to use where.

The key products are:

Resene Waterborne Woodsman penetrating stain for weatherboards and fences, available in a range of colours.

Resene Woodsman Decking Stain, waterborne penetrating stain for decks, available in a range of colours.

Resene Woodsman Wood Oil Stain for those who prefer a more traditional wood oil style finish.

Resene Kwila Timber Stain designed for Kwila and other exotic hardwoods, very popular on decking, furniture and garage doors.

Resene Furniture and Decking Oil, a lightly coloured oil ideal for decks and furniture.

Resene Timber and Furniture Gel, much like a furniture polish but for outside, this is a thick product that can be applied to a variety of small timber substrates much easier than a normal stain.

Resene Timber and Deck Wash, ideal for cleaning down timber surfaces before you paint or stain and on a regular basis to keep them in good condition.

If you're planning to use a dark stain, choose a **Resene CoolColour™** tinted into **Resene Waterborne Woodsman** or **Resene Woodsman Decking Stain**.

View the extensive range of **Resene Woodcare** wood finishing options for indoors and out on the new **Resene Woodcare** stand. Check with your local Resene ColorShop when their new woodcare stand is being installed then pop down and have a look at samples of the wide range of options you can choose from.

The **Resene Woodcare** range is available from Resene ColorShops and resellers nationwide. The new **Resene Exterior Woodcare** colour chart will be available through stores as the previous charts run out.

We have all the woodcare products you need inside or out

Resene
the paint the professionals use

www.resene.com.au 1800 738 383
www.resene.co.nz 0800 RESENE (737 36)

weatherproof and waterproof

Looking for a resilient exterior coating for concrete that is highly water resistant, possesses excellent adhesion and stretch characteristics and looks as good as it performs? Then choose **Resene X-200** and enjoy a quality of finish that buildings all over the country have been enjoying for years.

Resene X-200 uniquely combines low viscosity with high build ensuring excellent penetration into cracks and pores and superb adhesion. It develops into a tough, durable and continuous membrane, while its fibre reinforcement increases tensile strength. **Resene X-200** is a popular choice for refurbishments in areas prone to earthquakes and for concrete buildings nationwide.

And it's available in an extensive range of Resene

colours including the heat reflective **Resene CoolColour™** technology.

Protect your concrete projects with **Resene X-200** and keep them looking good long into the future. See Data Sheet D62 for technical information.

Resene
X-200
acrylic waterproofing membrane

Paint systems for earthquake affected buildings

Resene
the paint the professionals use

For more information on recommended paint systems for restoring homes and buildings after an earthquake, see the Resene Paint systems for earthquake affected buildings booklet available online at www.resene.com/aftertheearthquake or from selected Resene ColorShops.



faux wall style

Stone, wood, steel and tile... the Murano wallpaper collection of faux finishes for walls will serve to inspire your imagination when planning your new space. Let your imagination run wild and use combinations from this collection to produce stunning results in residential or commercial interiors.

Complement your favourite wallpaper with your favourite Resene colours for a complete interior look.

View over 6000 wallpapers on the Resene website at www.resene.com/wallpaper, on your phone or iPhone with Resene iSwatch, www.resene.com/iswatch or at your local Resene ColorShop.



sticky complements

Add dinosaurs, flowers, animals and more to children's rooms without damaging the paintwork with Homesticker self-adhesive wall stickers. Or dress up lounges, bedrooms or other living areas. You can arrange the sets however you like – the only limit is your imagination.

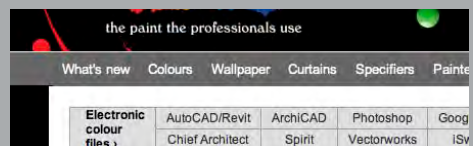
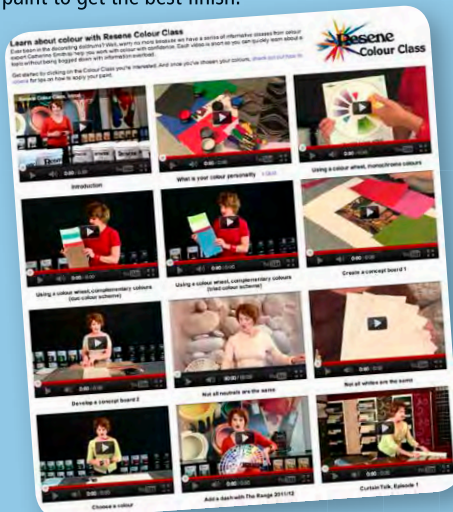
Easy to apply, larger stickers can be used to disguise minor flaws, though generally the smoother and cleaner the surface, the better the result. When you are ready for a change of design, Homestickers can be carefully removed and replaced with a new design.

Resene have put together a collection of popular Homesticker options to make it easy to choose your favourite. View the collection on the Resene website www.resene.com/homestickers.htm or pop into your local Resene ColorShop to view more options in our in store catalogue. (NZ only).



colour class

Ever been in the decorating doldrums or had a client stuck on their colour choices? Well, worry no more because Resene have a series of informative classes from colour expert Catherine Smith to help everyone work with colour with confidence. Each video is short providing a quick lesson on a topic without being bogged down with information overload. View them free online at www.resene.com/colourclass.htm. And once the colours are decided, view Resene's how to videos for tips on how to apply paint to get the best finish.



kitchen colour

The latest addition to the Resene electronic colour tool collection is customised colour files for 3D Kitchen software. 3D Kitchen provides a variety of software solutions to suit all cabinet making and design applications and can now be coloured using your chosen Resene colours. To access the Resene colour updater for 3D Kitchen, please email tonyc@3dkitchen.com.

Resene also has an extensive collection of electronic colour tools and files for AutoCAD, Revit, ArchiCAD, Sketch Up, Vectorworks, Chief Architect, Photoshop, Design2Cam and Spirit, and an online collection of colour swatch jpegs and RGB values. See the Resene website www.resene.com/electroniccolour for details.



Resene. Licensed products since 1996



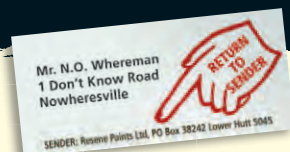
RES-2008
GIECA 23-2005
Architectural and Professional Coatings



the paint the professionals use



sustainable BUSINESS NETWORK



Incorrect mailing: If you are receiving multiple mailings or you would like us to change your mailing details, please call: In Australia phone 1800 738 383, in New Zealand phone 0800 RESENE (737 363) or email update@resene.co.nz.