

In New Zealand, PO Box 38-242, Wellington Mail Centre
Call 0800 RESENE, visit www.resene.co.nz
or email advice@resene.co.nz

Resene
the paint the professionals use

In Australia, PO Box 785, Ashmore City, Queensland 4214
Call 1800 738 383, visit www.resene.com.au
or email advice@resene.com.au



water world

Client: Recreation Porirua
Designer: Cut The Mustard
Painting Contractor: Programmed
Maintenance Services, Wellington
Resene: Camille Jaspers, Wellington
Architectural Services Representative

Air and light meets the childlike feel of a fantasy world with the recent upgrade of the Porirua Trust Aquatic Centre. The brief called for event theming and interior design entwining them together in a unique way for the foyer, café and pool areas banishing the tired and cluttered look from the much-loved public facility.

Coloured washes create beautiful light and enhance a sky of shimmering floating bubbles. Everywhere you cast your eye, bubble shapes, iridescent decals, frosted surfaces, aluminium and gleaming silver finishes work together to enhance the illusion.

Decorative swans are finished in Resene Quick Dry Acrylic Primer Undercoat followed by Resene Lumbersider satin acrylic and pearlescent coats of Resene Pearl Shimmer decorated with glitter stars. The starstruck finish was then finished in Resene Multishield+ acrylic glaze to protect the dazzling finish.

Previously painted old galvanised steel railings, panels and wires showing signs of corrosion, flaking and mould were brought back to life with careful surface preparation, Resene Waterborne Smooth Surface Sealer and Resene Enamacryl Metallic with a final protective coat of Resene Uracryl 403.

Paperfaced plasterboard in non-pool areas was treated with Resene Sureseal first where waterstained to seal in stains then finished in Resene SpaceCote Low Sheen waterborne enamel for a tough durable finish with low odour to minimise disruption to centre users.

In the swimming pool area, paperfaced plasterboard was finished with Resene Sureseal to seal in visible waterstains followed by the high gloss of Resene Enamacryl for an easy clean, attractive gloss finish. The mural feature wall was commenced with spot priming with Resene Concrete Primer on damaged areas of the concrete wall substrate followed by a paint system of Resene Acrylic Undercoat and Resene Enamacryl, a topcoat system repeated on once varnished timber doors and frames.

The hydroslide tower gleams in Resene Enamacryl high gloss combined with Resene Enamacryl Metallic protected by Resene Aquaclear for a striking feature.

The palette for the centre extends through water inspired greens and blues to clean edged silver and blast metallics in keeping with the aquatic atmosphere, with hues of Resene Gotham (sea blue), Resene Ivanhoe (slate blue), Resene Sorrento (serene blue green), Resene Abacus (pale slate blue) and Resene Bel Air (watery green) joined by Resene Blast Grey 3 (grey metallic), Resene Silver Aluminium (silver metallic) and Resene Eighth Oilskin (dusky taupe).

Splish, splash, splosh meets dazzle, glitter and glow... going for a swim has never been so much fun.

diva



Formally known as The Hastings Municipal Theatre Complex, the Hawke's Bay Opera House & Precinct in Hastings Street, Hastings, best known for its reputation for being one of the best lyric theatres of its type in New Zealand, has recently undergone a change of management dedicated to its restoration and rejuvenation.

The Hawke's Bay Opera House, originally designed by H.E. White, was built in 1915, later surviving a major earthquake in 1931 that almost completely destroyed Hastings and Napier. Since first opening, the Municipal Theatre has been a joint venue for pictures, live theatre, musicals and other performances.

The first stage of extensive interior and exterior restorative work began in the late 1980's to restore it to its former glory and enhance the traditional beauty of the building. A walkway connecting the Municipal Theatre and the Municipal Buildings followed in 1994 to combine both facilities.

The most recent rejuvenation included a full exterior and interior repaint to bring out the best of the design. Inside **Resene SpaceCote Low Sheen** joined by **Resene Enamacryl Metallic** combine for a subtle low sheen finish with dramatic dazzling punches while the outside gleams in a fresh coat of **Resene Wintergrade Lumbersider** complemented by features of **Resene Karaka** (murky green) and **Resene Diesel** (red black) on the soffits, joinery and balustrades. **Resene Wintergrade Lumbersider** allowed the painting team to keep working through a bitterly cold winter when normal waterborne paints would have forced them indoors.



Architect: Roger Shand
Painting Contractor: Freeman Decorators Ltd
Resene: Helen Clayton-Greene,
Hastings Trade Sales Representative;
Richard Chandler, Hawkes Bay Branch Manager

With a team committed to developing the facilities, a fresh new finish and applauding audiences, the Hawke's Bay Opera House & Precinct is just the ticket theatre lovers are looking for.



Think world-class marine electronics and Global Positioning System (GPS) technology and Navman, the New Zealand company established in 1988 immediately comes to mind. With innovative products in its stable, flexibility at the heart of its design culture and demand growing rapidly the refurbishment and new space development for Navman in Kawana Street, Northcote, Auckland needed to fit the culture of the burgeoning team within. To accommodate the additional staff required to satisfy clamouring customer demands, the Navman building has now spilled out into the abutting building.

Desiring an up-to-the-moment look, the design was strongly numbers driven needing to provide motivating working spaces for 400 staff, many used to working off-site, into a centralised 4300 square metre area. The need to future proof was top of mind throughout the design process. With technology rapidly changing, the final format is flexible from the office areas through to cafeteria, library and gymnasium to expand as the workforce and customers demand.

Resene SpaceCote Low Sheen waterborne enamel covers most interior substrates joined by **Resene Polythane** on concrete floors for an edgily raw, easy clean look.

Outside a glazed elliptical form with a floating canopy roof commands immediate attention reinforcing the hive of innovation within.



Architect: Tony Gracie, Gracie Architecture
Building Contractor: Amstar
Painting Contractor: Velco
Photographer: Peter Beattie
Resene: Dean Blackwood, South Auckland Area Manager;
Meryl Southey-Brown, Colour Support Representative

urbanite



Architect: Marcel Veth, Architect: Malcolm Brown, Director: Brown and Day
Building Contractor: Clearwater Construction
Painting Contractor: ST Taylor Painters & Decorators
Resene: Bryce McDermott, West Auckland Branch Manager

A stone's throw from the hustle and bustle of Queen Street, the Citta Apartments on the crest of Upper Symonds Street and Khyber Pass successfully meld urban location, convenience and modern, stylish design and finishing. Ground floor retail provides a shopfront to the project and protects residents from the passing vehicular and foot traffic while giving them a quick stop shopping option, while the enclosed courtyard is a quiet haven from the busy city.

The building design blends heritage detailing with solid masonry and modern comfort. The tilt slab exterior is finished in Resene Concrete Primer followed by two topcoats of Resene X-200 Waterproofing Membrane in a range of 10 custom colours including a dark green not usually seen in this finish. A 10 year waterproofing guarantee on the Resene X-200 finished surfaces and seven year colourfastness guarantee on the dark green provides reassurance to current and prospective owners.

With shopping at their door, plus restaurants and entertainment just an easy walk away, residents can throw away the car keys and let their feet do the walking.



Long serving The Cardrona Hotel in Cardrona Valley, Wanaka has a long history of serving hungry and thirsty patrons since opening in the late 1800s to satisfy the wants of settlers drawn to the region to stake their claim on gold in the area. The Cardrona township dates back to 1865 and quickly grew to include four hotels, three European stores, four Chinese stores, four butcheries, one blacksmith and a baker. Cardrona remained an important commercial centre through the 1870s and 1880s based on the fluctuating fortunes of the mining industry. Today only the Cardrona Hotel, Annexe and adjoining General Store remain. In 2000 the Cardrona Hotel was extensively altered to incorporate 16 ensuite rooms and provide a haven for weary travellers.

Well worn weatherboards dating back to the hotel's establishment required a thorough clean before priming with Resene Quick Dry acrylic primer undercoat and topcoating in Resene Lumbersider satin acrylic to complete the Environmental Choice approved paint system. The satin finish tinted to the original colours of Cardrona Red and Dairy Cream is sympathetic to the weathered substrate and in keeping with the aged façade.

Full of memories, one story often heard tells of a long serving owner James Paterson who took over the hotel in 1926 and was famous for serving warm beer from a bottle that had a cork in it, not serving women and rationing patrons - one glass for those about to drive the Crown Range Road and two glasses for those headed for Wanaka. With James on the case, breath testing would never have been needed.

Architect: Sarah Scott Architects
Building Contractor: Amalgamated Builders, Queenstown
History: Courtesy of www.cardronahotel.co.nz

Painting Contractor: David Carmine Painting Contractors, Westport;
James Wren & Co, Queenstown
Resene: Bryan Newman, Blenheim Trade Sales Representative



outer beauty



Architect:
Architects Patterson
Painting Contractor:
Wayne Bowden
Property Developer:
Graham Smith
Development
Resene: Dean
Blackwood, South
Auckland Branch
Manager

Parnell, an eclectic mix of ethnicity, design and lifestyle with low rise to high rise working together for a unique living experience just a short walk from the hustle and bustle of central Auckland, is now home to a high quality apartment complex 'The George', nestled into the design precinct of St Georges Bay Road.

The sponged plaster over Hardibacker substrate exterior is finished in a brush and roller applied system of Resene Limelock to seal in free lime that may be present in the plaster and avoid the risk of lime staining, followed by Resene X-200 Waterproofing Membrane and Resene AquaShield mineral effect tinted to the popular Resene Bison Hide (green beige), for a dead flat finish designed to minimise dirt buildup.

For residents, the location is both a convenient hop, skip and jump to eateries, design houses and fashion shopping options and a sanctuary to escape the city when the day is done. With exterior painting off the to-do list for some time to come, The George is a great place to call home.

history repeats

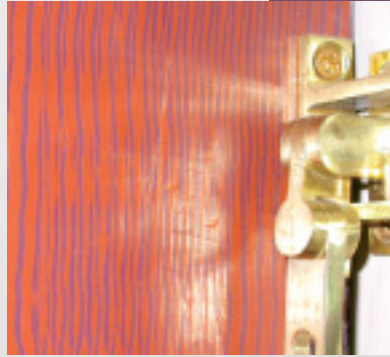
Restoring a 1926 bungalow to its original glory requires care and attention to detail to meld modern coating technologies with traditional techniques and finishes to achieve the original look and feel without compromising on durability and wearability.

The paperfaced plasterboard walls were finished in Resene SpaceCote Low Sheen in hues of Resene Sugar Loaf (greyed beige) and Resene Heathered Grey (worn grey brown) for a neutral backdrop. Timber joinery was painted to achieve a woodgrain finish using Resene Lustacryl tinted to Resene Aubergine (wine red) as the basecoat and Resene Hairy Heath (redwood brown) as the topcoat before sealing with Resene Aquaclear Satin to provide a lower sheen clear protective finish.

A prime example of how restoring the old does not mean forgoing the innovations of today, the clever use of Resene waterborne enamel on the trim provided products easy to work with while still allowing the striking woodgrain effect to be achieved. The low sheen of Resene SpaceCote Low Sheen is in keeping with the style of historic finishes but with much improved wearability while the exterior tin roof is now protected in Resene Hi-Glo Cool Colours, providing the desired colour effect while minimising heat retention to provide more comfortable living conditions in the warm Auckland summers.

Built in coatings technology with the look of the past.

Owner: Peter Reed, Salmond Reed Architecture
Resene: Kane Walmsley, Auckland Architectural Services Representative, Mt Eden ColorShop



two by two



Owners:
Ken and Bev Loader
Painting Contractor:
Warren Hanna,
Rockcote Systems
Resene:
Dave Clarkson,
Christchurch Branch
Manager
Specification Writer:
Roger Olds, Rockcote
Systems



The animals all went marching two by two has taken on a completely new meaning with the new Noah's Ark in the Gethsemane Gardens in Revelation Drive, Christchurch becoming a haven for guests of the humankind. Couples marching up to this Ark can be married within its confines for an undeniably memorable wedding experience.

Built as a replica to the historic Noah's Ark, painstaking attention to detail has resulted in rave reviews throughout Christchurch.

In keeping with the authenticity, timber features extensively on the interior coated in Resene Waterborne Colorwood woodstain, while the outside features timber finished in Resene Waterborne Woodsman woodstain. Internal concrete block walls are finished in Resene Thixalon 5 complemented by application of Resene X-200 Waterproofing Membrane and Resene Thixalon 5 with chop strand matting to form durable decking. Perched high up on Red Cliffs overlooking the East Coast of Canterbury this Ark is well positioned to enjoy the views and provide panoramic photographic settings without fear of getting wet feet.



historic mermaid

Coastal land and water just a hop skip and a jump away is a luxury many can only dream of with land being sold up and sliced up before becoming home to multiple new owners.

This beautiful residence in the Esplanade, Woody Point, staked its claim on the seaside many years ago and with owners carefully maintaining its good looks and structural integrity, the land is likely to be taken for many years to come. While its coastal location has some drawbacks in terms of the salt laden airs and stiff sea breezes, the warm summer days fade memories of the fury the sea can bring.

In keeping with its heritage stylings, the home has been finished in Environmental Choice approved Resene Lumbersider in hues of Resene Double Spanish White (complex beige neutral) as the primary colour complemented by trims of Resene Quarter Spanish White (complex neutral) on trims, fences, roof and the ballustrading. Ever popular colours, this home combines prime location with prime paint finishes for the maximum relaxation and minimum of maintenance.

Painting Contractor: Hestehange & Murphy
Resene: Jason Osborn, Queensland Trade Sales Representative



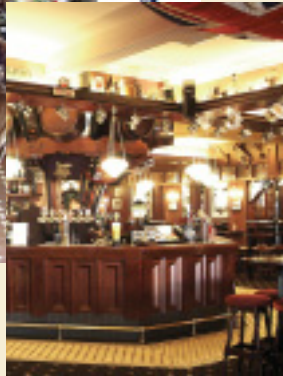
bullseye

When Newmarket workers weary from a long work week turn their attention to a weekend of socialising, the new Cock & Bull in Newmarket quickly comes to mind. On the corner of Khyber Pass Road and Kingdon Street in Newmarket, this new tavern has swiftly become a popular meeting place both for its convenient location and fun-themed atmosphere.

The exterior draws from the traditional and is familiar in the Cock & Bull colours of **Resene Burgundy** (deep red oxide), black and trims of **Resene Enamacryl Metallic** tinted to **Resene Gold Dust** (gold metallic). The goldmine continues inside with **Resene Gold Dust** reappearing on ceiling trims joined by **Resene Zylone 20** flat acrylic tinted to warmed **Resene Putty** (strong cream) on ceiling areas. Interior panelling is Pine finished with a Rimu stain for a rich warm woody feel, perfect to help patrons feel comfortable and relaxed.

Texture is added in the form of **Resene Sandtex** tinted to the terracotta-inspired **Resene Paarl** (brown terracotta), while hues of **Resene Papier Mache** (soft leathery tan), **Resene Colonial White** (yellow cream), **Resene Espresso** (brown red) and **Resene Bordeaux** (traditional red) complete the mix.

With drinking and eating spots scattered all over the place, the Cock & Bull has, through clever theming, consistency of brand offering and service, no trouble drawing a full brew of patrons.



Architect: Kent Fabian
 Architectural Designer: Margaret Douglas, Hames Sharley
 Client: Cock & Bull
 Painting Contractor: Mike Smith, North South Painters
 Resene: Nick Armiger, North Shore Area Manager; Newmarket ColorShop



well trained

The Taieri Gorge Railway, started in 1879 and closed in 1990, comprises 60 km of the Otago Central Railway of the New Zealand Railways traversed by the Taieri Gorge train familiarly known as the 'yellow train'.

Construction of the railway began in June 1879, but fell victim to the economic depression that persisted through the 1880s. The first section of just 27 km to Hindon opened to traffic in 1889, extending to multiple stops before reaching Clyde in 1907. Following seven years of halted construction followed by seven years of construction the line was finally completed the full 235 km to Cromwell.

Notoriously bad roads fuelled the popularity of railways for transport and communications. Thousands of tonnes of farm produce and fruit and scores of livestock were railed to Dunedin and north, while supplies for Central Otago arrived by return train accompanied by regular passenger services. Removal of transport licensing and the upgrading of roads into Central Otago saw volumes decline with regular passenger trains ceasing in 1976.

In 1979 the newly formed Otago Excursion Train Trust ran its first public excursion train from Dunedin to Cromwell, the first of thousands of trips showing the unique scenery of Central Otago to tourists formalised in 1987 when The Taieri Gorge Limited service became a regular tourist train. Construction of the Clyde Dam provided steady freight business until 1989 when the Minister of Railways announced that the line would be closed

on 30 April 1990. Simultaneously the Dunedin City Council announced they would buy the line through the Taieri Gorge and as far as Middlemarch if the community raised \$1 million to finance the project to enable the Taieri Gorge Train excursions to continue. By July 1990 \$1.2 million had been raised and the 60 km Taieri Gorge Railway officially became New Zealand's longest private railway.

Today the famous yellow train has a modernised look while still retaining the colour for which it is known. Using a durable paint system of **Resene TimberLock** preserver/conditioner, **Resene solventborne primer** and a topcoat system of **Resene Uracryl 403** in hues of **Resene Sun** (bright yellow) for the main bodywork, **Resene Heath** (deep maroon) for the trimwork and high gloss black for rails, steps and other ironwork, the completed paintwork does the railway proud when tourists show off their holiday photos. A unique experience winding through the Taieri Gorge, tourists are flocking to save their seat.

History: Excerpts from www.taieri.co.nz
 Painting Contractor: Pat Beman
 Resene: Jo Parry, Dunedin Colour Consultant

Just when you thought the grass was always greener, the Caroline Bay Mini Golf Association have proved the old saying wrong. The recent refurbishment of the mini golf course in Caroline Bay was originally destined to have the standard artificial grass affixed to the bare concrete shaping of the mini golf holes, until **Resene Non-Skid Deck & Path** was discovered. The plans to replace old artificial grass with new were quickly replaced by coats of **Resene Non-Skid Deck & Path** tinted to **Resene Petanque** (green), applied by volunteers for half the price of the original grass surfacing.

The **Resene Non-Skid Deck & Path** surface has proved a winner among players, being non-slip, durable, easy to clean leaves and debris off and with a little more bounce than the artificial grass that is traditionally used on mini golf courses. And when the coating starts to get dirty, a quick scrub with diluted **Resene Paint Prep and Housewash** and the golf holes look fresh again.

With the mini golf course protected with a durable finish that will go the distance, local mini golf enthusiasts can get on with the business of playing their favourite game and chasing that elusive Hole-in-One.



on par

Mini Golf Course Creator: Warren Barker
 c/- Caroline Bay Mini Golf Association
 Resene: Timaru ColorShop



When it comes with a price tag of two million dollars for construction costs alone, queuing up for the new ride at the Ginger Factory in Eumundi, Sunshine Coast promises a fantastic return. The Ginger Traveller ride features a boat that travels through over twenty different countries, each with their own ginger inspired theme, including the New Zealand vs Gingeroo's team and a gingerised haka, not forgetting the sheep spectators. With so many countries to traverse, the Resene interior and exterior finishes and colours are plentiful and diverse ranging from Resene Enamacryl Metallic to popular premium paint finishes Resene SpaceCote Low Sheen and Resene Lustacryl waterborne enamels through to the hard to miss Resene Havoc (chromatic red) and Resene Turbo (bright yellow) of the exterior.

With the boat ride now in motion, passengers are lining up for their shore-to-ship passes.



Designer: Promotion in Motion

Painting Contractor: Shane Boekman

Resene: Jason Osborn, Queensland Trade Sales Representative

brushstrokes

Whether beiges, creams, off whites or hazy greys fit your description of the perfect whites and neutrals, **The Range Whites & Neutrals** is the best place to start. Once boasting 195 colour options, The Range Whites & Neutrals has expanded to 300 whites and neutrals selections including new dark browns, blacks and additional variations of some favourite Resene hues.

See your Resene representative for the new **The Range Whites & Neutrals** or buy a copy from your local Resene ColorShop. With 300 whites and neutrals to choose from, displayed in tonal variations, selecting colour schemes is easy.

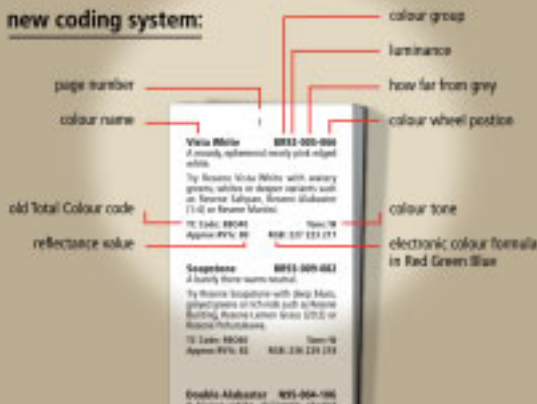


the right white

Decipher

Resene Total Colour codes, such as 1R020 will be gradually replaced with a **new code format** that enables easier comparison between colours. The new codes have been designed to translate into colour information enabling specifiers and decorators to make direct comparisons on three attributes between multiple colours. While the existing codes allow comparison of colours on scales of dark and light and position within general colourspace, there is no provision for a measurement of the **greyness** of a colour.

new coding system:



The new codes follow a format of BR92-005-066.

The first letter or letters tells you what colour palette the colour is from: e.g. G = Green, B = Blue, R = Red, BR = Brown, Y = Yellow, N = Neutral, V = Violet, O = Orange, M = Metallics.

- The first set of digits denote the colour's luminance, with 0 being approximately black and 100 being approximately white.
- The second set of digits denotes how far from grey the colour is - the higher the number the cleaner the colour, the lower the number the greater the grey tone in the colour.
- The last set of digits tells you where the colour sits on a wheel of colour of 0° - 360°. This allows you to place multiple colours into a sequence and determine the relative positioning of colours.

By comparing multiple colours using the new colour codes you can establish whether a colour is greyer or cleaner, brighter or darker and where they sit on a colour wheel.

During the changeover period colours and drawdowns will feature both the new code and the existing code to give all specifiers and decorators time to become familiar with the new coding.

even cooler

Resene Cool Colour technology has been in hot demand for everything from weatherboards to windowsills. To enable Resene Cool Colours to be used on a wider range of projects, Cool Colours are now available in Resene Lumbersider satin acrylic, Resene Sonyx 101 semi-gloss, Resene Hi-Glo gloss acrylic, Resene X-200 Waterproofing Membrane, Resene Enamacryl gloss waterborne enamel, Resene Lustacryl semi-gloss waterborne enamel and Resene AquaShield mineral effect.

Resene Cool Colour technology allows the coating to retain its normal visible colour but reflect heat from the surface, reducing stress on the coating and substrate and subsequent heat related damage improving the longevity of each. The technology also minimises build up of unwanted heat in the building reducing airconditioning and cooling costs.

Cool Colour technology is best suited to colours that have black in their make-up, such as popular Resene Lumbersider black and colours such as Karaka, Nero, New Denim Blue plus many more.

So keep your cool and find more technical information in the Resene Architects Memo: "Cool Eh?" - available online or on cellphone or contact your Resene Representative.



Grey panel is a standard coating. The black panel is coated in Resene Cool Colour technology. The black Resene Cool Colour panel reflects more heat and remains cooler than the standard paint finish on the grey panel.



designer walls



step by step

Resene Sidewalk solventborne paving paint has had a long history as part of the Resene product range, providing protection for porches, paths and steps all over the country. Keen to offer customers waterborne alternatives, Resene has now released a waterborne version of Resene Sidewalk.

Unlike its predecessor, the new Resene Waterborne Sidewalk fits into the standard Resene Total Colour System tinting regime, allowing specifiers and decorators to choose any Resene colours from light, pastel, deep or ultra deep tone, giving a selection of over 900 colours compared to the existing range of 20 colour options and allowing specifiers to select flooring options to match their colour schemes with ease.

In keeping with the trend towards lower sheen finishes, Resene Waterborne Sidewalk has a satin finish and is perfectly at home indoors or out on porches, paths, steps, garage floors and other trafficable areas. For a non-skid option, combine Resene Waterborne Sidewalk with Resene SRG Grit or opt for Resene Non-Skid Deck & Path.

Both solventborne and Resene Waterborne Sidewalk will be available for a period of time, beyond which the solventborne variant will be replaced by its waterborne counterpart.

See Data Sheet D38a for more information on Resene Waterborne Sidewalk.

European textiles designer **Ulf Moritz** is famous for his innovative wallpapers. He overturns dusty clichés with his designs.

Scala, his latest collection, is a bold take on opulence using special effects - lacquer, tiny pearls of glass, textured granules - to create a sense of movement and reflect light. Inspired by classic baroque and rococo patterns and by Japanese themes, Moritz brings a modern and eye-catching vision to walls. Part of his unique style is to blend large-scale designs with matt and lustrous colours in both ornamental and minimalist looks. The result is a stunning showcase for wallpaper.

Currently a professor for textile design at the Eindhoven Design Academy, Holland, Ulf Moritz's design work features in collections at the Cooper-Hewitt Museum in New York and Amsterdam's Stedelijk Museum.

The Scala range is available exclusively from Resene. View the Scala range at selected Resene ColorShops and through Resene Architectural Service Representatives and prepare to be enthralled.

get connected

Most of us are now familiar with the worldwide web and are comfortable accessing it from the nearest computer. However, turn to the mobilised website scene and confidence tends to drop. Selections from the Resene website are available on your WAP enabled cellphone in a mobilised website. Best of all, for those who have struggled to find mobilised websites in the past, life has become much simpler. Simply txt 'Resene' to 4722. You'll receive a reply email and if your phone is WAP or WEB enabled just click on the link and you'll find yourself in the mobile web. Easy!

The mobilised Resene website allows you to access Resene product data sheets, Resene ColorShop maps, contact details and opening hours, Architects Memos plus much more on your cellphone.

It's the handy way to access Resene when your computer is stuck at the office and you're stuck on the worksite.



web wise

A Hitwise award winning website (ranked #1 in the Hitwise New Zealand 'Business and Finance - Building and Construction' each quarter for the last 4 years!), the Resene website has undergone a makeover to make navigation easier. With tens of thousands of hyperlinks and hundreds and hundreds of pages to navigate, a new master navigation bar has been added to pages to make finding your way around the site easier no matter where you are.

As part of the upgrade, a Data Sheet quickfind page has been added listing Resene data sheets in alphabetical order (www.resene.co.nz/archspec/datashts/search_index.htm). Specification manual pages are now displayed in pdf format incorporating hyperlinks to data sheets, so simply open the pdf for your substrate and click on the links to view and print appropriate surface preparation and product data sheets. The pdfs print to A4 giving you a tidier copy for inclusion in specifications as required. If you prefer to use the MasterSpec system, the Resene sections of the Standard and Basic versions are available free to download from the Architects and Specifiers section.

With everything from colour swatches to pencil recipes, Architects Memos to Material Safety Data Sheets, case studies to textured coatings, if you can't find what you are looking for drop us an email to advice@resene.co.nz (NZ) or www.resene.com.au (AUST) and we'll help you to find the information you need.



escape



Habitat - the escape issue features a collection of homes designed to help their owners escape the rush of the city.

If you haven't caught a copy of the escape issue yet, the Summer 05 issue of Habitat magazine is available from Resene ColorShops and Representatives nationwide.



wise worth

The **Resene PaintWise** unwanted paint and paint packaging recovery service, running in Auckland, Hamilton and Tauranga since 1 September 2005, has donated over 5000 litres of paint to community groups for everything from town beautification through to arts and crafts work, covering unsightly graffiti and repainting horse jumps.

Unwanted paint and paint packaging may be returned to Resene ColorShops in Wairau Park, Mt Eden, Henderson, New Lynn, Manukau, Pukekohe, Takanini, Hamilton and Tauranga. A dedicated **Resene PaintWise truck** visits Resene ColorShops processing the returns before moving onto the next location.

The **PaintWise service** includes options for on-site contractor paint recovery to help contractors clear storage areas full of unwanted paint.

See www.resene.co.nz/paintwise.htm for more information.



escape outside

Recognising that it takes more than just plants to make a good garden, **Colin Magee** has delved into garden artwork as an escape from working indoors. His own half acre section is a showpiece of how to combine manmade art with nature's beauty incorporating seven different places to sit depending on the weather, the guests and even your mood.

Each spot is designed as a garden room with a unique theme and feel linking into the outdoor art. A highlight is an Australian Outback painting comprising thousands of dots and two months of painstaking work.

Most creations feature wrought iron, highlighted with brightly coloured screens developed using **Resene testpots**, selected for their extensive colour range and affordability when using multiple hues.

With a favourite colour of **Resene Spritzer** (bright yellow green) just one indicator of impact, these works have distinct personalities reinforced by their colourings, giving lucky owners the perfect excuse to escape outdoors.



Artist: Colin Magee



the grass is greener... browner... whiter...

Grasscloth is a perennial favourite with designers - a wallcovering that effortlessly adds texture and a natural serene effect to interiors. A handmade material using natural reed, jute, and arrowroot fibres, environmentally friendly grasscloth suits both classic and contemporary environments.

Slight variations of colour and texture are inherent characteristics of this distinctive stylish wallcovering that works well with earthy and oxide hues from the **Resene The Range 2006** and **The Range Whites & Neutrals** fan decks.

View the **Grasscloths Collection** exclusive to Resene at Resene ColorShops nationwide.



pattern 21412



pattern 21418



colour up

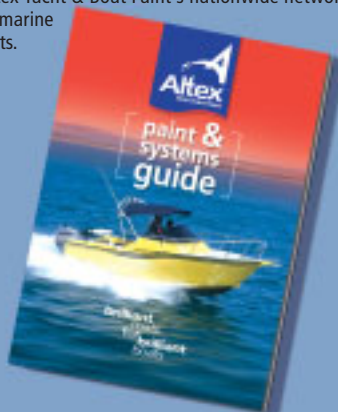
Supplier inflexibility was the ideal motivation for Resene to develop its own **MPS stainers**, often used by trade contractors to add a touch of colour to white products. The new formulations are based on the same colour groupings of the existing products but are generally stronger so **less is needed** to achieve the same colour. In response to demand, the pack size will become 250ml to reduce the current wastage associated with the 500ml packs where some colours are only used sparingly. The **new Resene MPS Stainers** stock will trickle through as the old 500ml stock runs out.



boatie be-wise

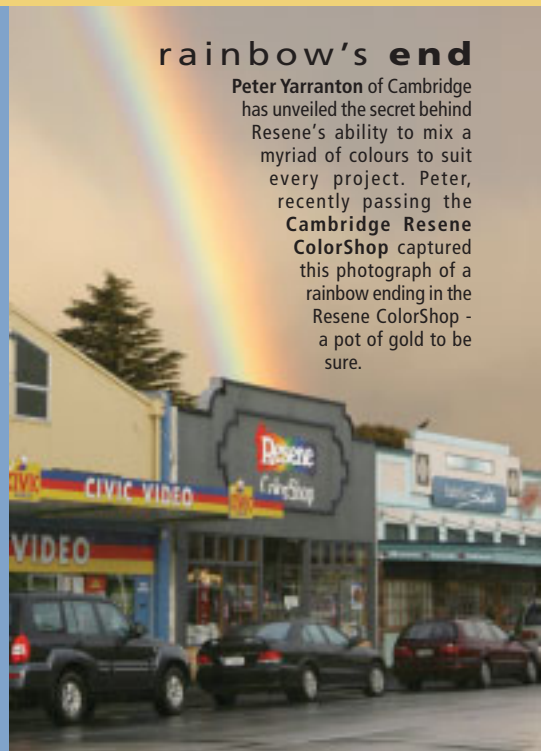
For boat owners keen to do their own painting or just wanting to understand what the professional marine painter is doing, the new **Altex Paint & Systems Guide** is a must-have. The guide is a free, easy-to-understand, 56-page booklet, ideal for pleasure boat owners, professional boat painters and boat builders.

Joining detailed information on the extensive range of **Altex Yacht & Boat Paint** coatings are handy hints, showing how to best mix, thin and apply them for the optimum result. The **Paint & Systems Guide** is available free from Altex Yacht & Boat Paint's nationwide network of specialist marine paint stockists.



rainbow's end

Peter Yarranton of Cambridge has unveiled the secret behind Resene's ability to mix a myriad of colours to suit every project. Peter, recently passing the **Cambridge Resene ColorShop** captured this photograph of a rainbow ending in the Resene ColorShop - a pot of gold to be sure.



Incorrect Mailing If you are receiving multiple mailings or you would like us to change your mailing details, please call 0800 RESENE (NZ), email us at advice@resene.co.nz or fax 04-577-0664 (NZ) giving the current address where you are receiving mail and the change/s required.