

# BOLDmoves

Autumn/Winter 2012-2013 looks cheerful and promising with the entire colour spectrum sighted at this year's Paris Fashion Week.

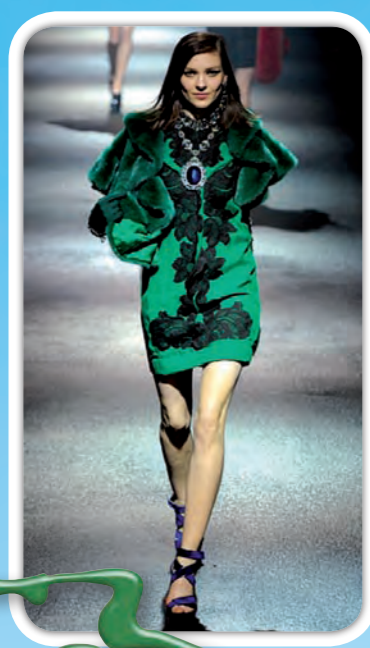
IT SEEMS all the designers at Paris Fashion Week were on the same wavelength when they were designing their collections for autumn/winter 2012-13. Almost every collection had a vast array of bold colours from pink and orange to green and red.

Confident colours were turned into an epidemic in Paris in March, granted there were the classic black and white shades that are seen throughout the year. Heavy upholstery type fabrics were used among collections which gave an appropriate balance to the glitter and space-age metallics that were also showcased.

Shoes and accessories were no exception to this Fall/Winter rule, silver metallic shoes that were somewhat reminiscent of moonboots. PETA wouldn't be happy with the amount of fur seen this year, this time not only gracing elaborate coats but on flaps of handbags, clutches and trims

for shoes and boots in almost all the colours of the rainbow. It is good to know that with the warm fabrics and colours you won't feel the cold, just think back to when, for some reason designers thought it was a good idea to incorporate the layering effect into collections which saw many of us wearing 10 tops under the coat.

Lanvin's collection for Autumn/Winter 12-13 below shows a dexterous use of complex trimmings, incredible embroideries and beaded embellishments which is trademark of Lanvin's clear, bold colour and tailored designs. **ad**



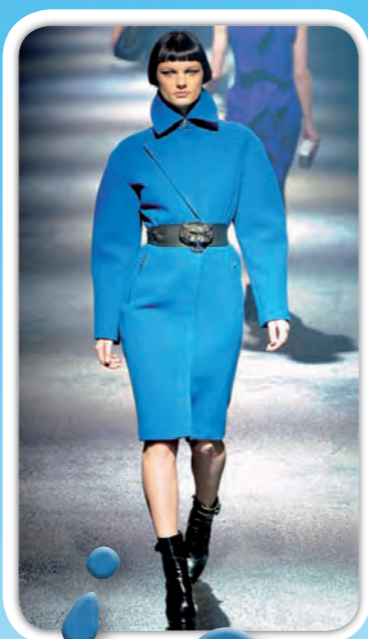
### Resene Area 51

Resene Area 51 is a fresh Galway green, full of good cheer which can be matched perfectly with deep violets and carbon blacks. Simple outline, gorgeous lace detail and paired with a cosy fur stole, Lanvin's heavy fabrics create a warm feeling without feeling burdensome with the delicate lace adding a feminine touch.



### Resene Elvis

An action packed energy filled with the moods of a Memphis mid blue bold and brash colour is what gives Resene's Elvis colour life. Lanvin teams this somewhat elegantly plain dress with white stockings and matching boxed clutch bag, leaving much space for those accessory lovers.



### Resene Lure

Lanvin shows off the skilful art of details with one of winter's essentials. Creating diagonals is often a challenge, here shown across the chest and the zip pockets tailored to the contour of the body. In an enticing oceanic blue Resene Lure is a mix of clarity and fathomless depth that warms up the winter colour palette.



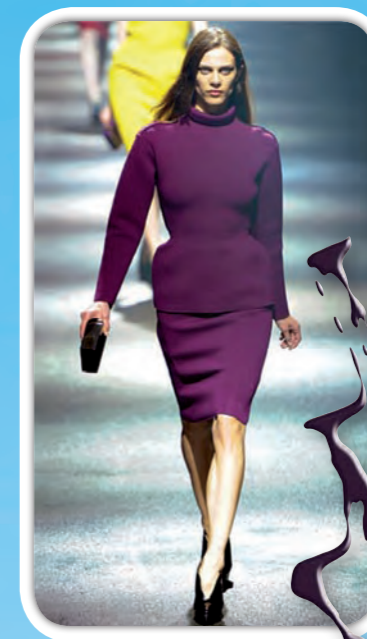
### Resene Whizz Bang

Popping the collar and the colour with Resene's Whizz Bang, conflagrating of heart and noise, firecracker bright and cheeky, coordinated with charcoal ankle boots. Adding detail to the collar gives this dress a dramatic winter look, possibly inspired by nature's lizards. Long sleeves will keep you toasty in the winter cold and the just above the knee princess look allows the legs to shine.



### Resene Galliano

No need for scarves this winter, it's all in the collar. Working heavy textiles around the neck is a recurring theme for Lanvin this winter. Resene Galliano is an intense honey sweet yellow, which segues spring to winter without a dramatic overcast tone.



### Resene Upstage

Bringing a somewhat military look this winter Lanvin's designs show intricate detail in the tailoring, allowing the outfit to be worn without the need for layering. Resene Upstage is a dramatic moody grape red, lavishly 'over the top' and theatrical. Paired here with deep black accessories but could be banded with poppy reds, peso limes and lime creams.



### Resene Landmark

A comfortable look this season minus the bulging of the layers, frills detailing the hips and waist. Inspired by the 1915 look, Lanvin refreshes and updates the look with a cut above the knee which has been brought back into fashion by Princess Catherine. Using Resene's Landmark brings summer into winter inspired by a frolic of aqua and combining softness and depth.

### 1. Resene Area 51

### 2. Resene Elvis

### 3. Resene Lure

### 4. Resene Whizz Bang

### 5. Resene Galliano

### 6. Resene Upstage

### 7. Resene Landmark

