

PERUVIAN

Nestled in Western South America lies a culturally diverse melting pot of inspiration. Peru has long served as the go-to visual stimuli for designers with its culture translated into fashionable mainstream garments. From tapestry prints to organic earthy tones, this season's runway was a multitude of stories with Peruvian roots.

ROBERTO Cavalli captivated the audience with an eclectic and somewhat psychedelic collection, taking colours from across the spectrum and treating them to a bohemian silhouette. Although this full-length gown read more like a silk tapestry, incorporating a colour similar to Resene Cobalt.

Stepping away from star power prints, Mary Katrantzou experiments with lace, jacquards, and brocades. The collection harnessed the power of symbols and symmetry, using "professional" insignia like badges and crests in a tribal context. Keeping the silhouette clean and streamline, Katrantzou let the embellishments speak for themselves without the often-distracting element of complex cuts. In a colour similar to Resene Red Planet, the deep maroon keeps this dress grounded in earthy tones.

Hailing from an Italian family known for its fine textiles, Veronica Etro was well equipped for her latest experiment with textures, patterns and colours. The collection experimented with trends like blanket dressing, with some pieces looking as if they were created from heritage rugs. It was a showcase of comfort and culture with playful use of embellishment to keep things interesting. Similar to Resene Heirloom, the

Resene Cobalt
ROBERTO
CAVALLI



Resene Heirloom
ETRO



Resene Double
Barbecue
EMILIO PUCCI



Resene Candy
Floss
THAKOON



Resene
Kournikova
A DETACHER



Resene
Wilderness
SONIA RYKIEL



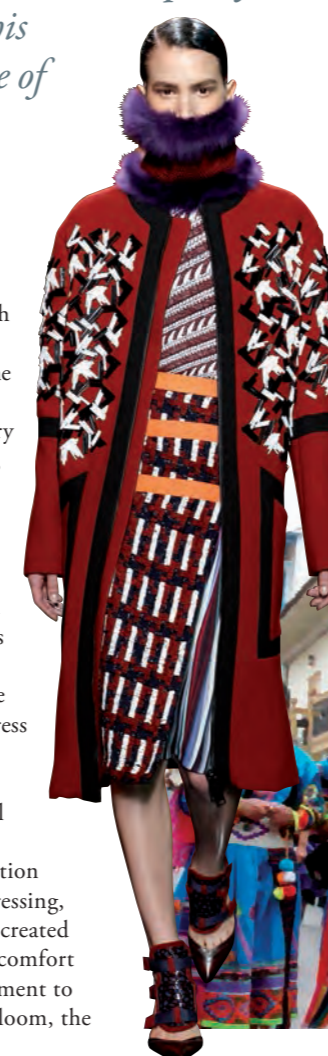
Resene Twizel
DRIES VAN
NOTEN



Resene
Adrenalin
KOLOR

greys in this collection are suitably named for Etro's trip down memory lane in the exploration of Italian classics. House of Holland created a psychedelic pantsuit, showcasing an array of neons and floral prints that mixed natural elements with synthetic influence. This floral print is a downplayed outfit in comparison to other pieces in the collection, with a green similar to Resene Watercourse. Described as "a gang of HOH harlots," the models carried Holland's creations with attitude, taking the already off the walls collection to the next level for light comedic relief.

For the men, Kolor produced a collection with a high dose of colour. Designer Junichi Abe said, "formal is boring. Life needs to be exciting. It needs lots of salt and pepper." And the collection was far from boring. The playful use of fabrics was treated with a heavy-handed approach to colour, with nearly every piece showcasing Abe's need to spice up the selection for men this season. This two-piece striped outfit is broken up with orange similar to Resene Adrenalin making each piece fresh and unique. [2]



Resene Code Red
PETER PILOTTO



Resene Red Planet
MARY
KATRANTZOU



Resene Watercourse
HOUSE OF
HOLLAND



Colours available
from Resene ColorShops
www.resene.co.nz
0800 737 363