



DIY

LADDER DISPLAY

Upcycle an old wooden ladder into a stylish plant stand using Karen Walker Chalk Colour paint.

WORDS & PHOTOS **MARK RAYNER**

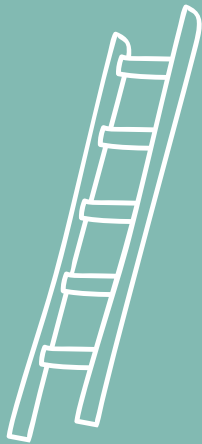
BROUGHT TO YOU BY



the paint the professionals use

You will need

- Clean cloths
- Nine assorted terracotta pots
- Old wooden ladder
 - Paintbrush
- Resene Aquapel and Terracotta Sealer
- Karen Walker Chalk Colour tinted to Resene Cooled Green
- Karen Walker Soft Wax
- Karen Walker Chalk Colour testpots in Resene Blanched Pink, Resene Powder Blue, Resene Robin Egg Blue, Resene Shadowy Blue and Resene Smoky Green
- Resene Quick Dry
- Rubber gloves
- Sandpaper



STEP ONE

Lightly sand the wooden ladder to 'key' the old paint surface.

STEP TWO

Wipe off any sanding residue with a clean cloth.

STEP THREE

Spot-prime any areas of bare wood with Resene Quick Dry and allow to dry.

STEP FOUR

Apply two coats of Karen Walker Chalk Colour tinted to Resene Cooled Green to the ladder, allowing two hours for each coat to dry.

STEP FIVE

Seal the terracotta pots with Resene Aquapel and Terracotta Sealer and allow to dry.

STEP SIX

Paint two of the terracotta pots with two coats of Karen Walker Chalk Colour in Resene Shadowy Blue, allowing two hours for each coat to dry.



the paint the professionals use

For more on paints and stains phone 0800 RESENE (0800 737 363) or visit your Resene ColorShop or www.resene.co.nz



To get the look
 Mark painted the background stucco wall with Resene AquaShield tinted to Resene Dutch White.



STEP SEVEN

Paint two of the terracotta pots with two coats of Karen Walker Chalk Colour in Resene Powder Blue, allowing two hours for each coat to dry.

STEP EIGHT

Paint two of the terracotta pots with two coats of Karen Walker Chalk Colour in Resene Blanched Pink, allowing two hours for each coat to dry.

STEP NINE

Paint two of the terracotta pots with two coats of Karen Walker Chalk Colour in Resene Smoky Green, allowing two hours for each coat to dry.

STEP TEN

Paint the final terracotta pot with two coats of Karen Walker Chalk Colour in Robin Egg Blue, allowing two hours for each coat to dry.

STEP ELEVEN

Wearing rubber gloves, apply a light coat of Karen Walker Soft Wax to the ladder using a soft clean cloth. Wipe off any excess wax with a soft clean cloth and allow the wax to dry.