



DIY



RACK IT UP

A space-saving produce rack made from wire baskets and untreated timber is great for storing your garden bounty.

WORDS & PHOTOS **MARK RAYNER**

BROUGHT TO YOU BY



the paint the professionals use

You will need

- Untreated pine measuring 185mm x 20mm – approx 1600mm
- Untreated pine measuring 40mm x 10mm – approx 1480mm
- 6 x 15mm white plastic-coated cup hooks
- 19mm galvanised clouts
- 3 x black wire baskets – ours measured 360mm (w) x 160mm (h) x 200mm (d)
 - Dry brush
 - Hammer
 - Paint stirrer
 - Paintbrush
 - Pencil
 - Pliers
 - PVA glue
- Resene Aquaclear
- Resene Colorwood Whitewash
 - Sanding block
 - Sandpaper
 - Saw
 - Set square
 - Tape measure



To get the look

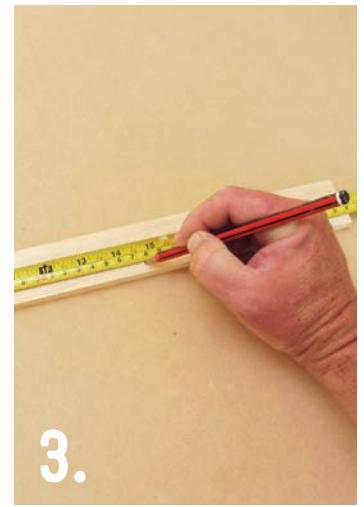
Mark painted the background wall with Resene SpaceCote Low Sheen Kitchen & Bathroom, tinted to Resene Duck Egg Blue.



1.



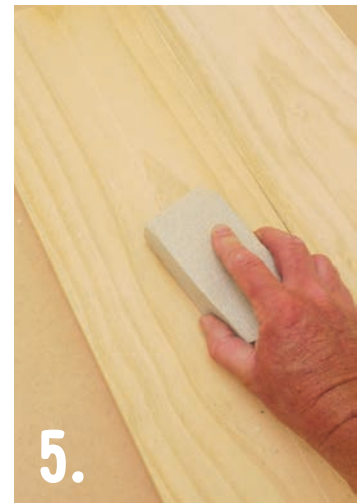
2.



3.



4.



5.



6.

STEP ONE

Measure and mark the 185mm x 20mm timber into two 800mm lengths.

STEP TWO

Use the back of the saw to rule a perpendicular cutting line.

STEP THREE

Measure and mark the 40mm x 10mm timber into four 370mm lengths.

STEP FOUR

Cut the pieces of timber to size and smooth any rough edges with sandpaper.

STEP FIVE

Sand all the pieces of timber until they are smooth, dusting off any sanding residue with a dry brush.

STEP SIX

Place the two 800mm lengths of timber together and fix one of the 370mm lengths across the top edge using 19mm clouts and PVA glue and then, using a set square, rule a horizontal line approx. 213mm down from this. Use this line as a guide to fix the second 370mm length into position.

Resene

the paint the professionals use

For more on paints and stains phone 0800 RESENE (0800 737 363) or visit your Resene ColorShop or www.resene.co.nz



7.



8.



9.



10.

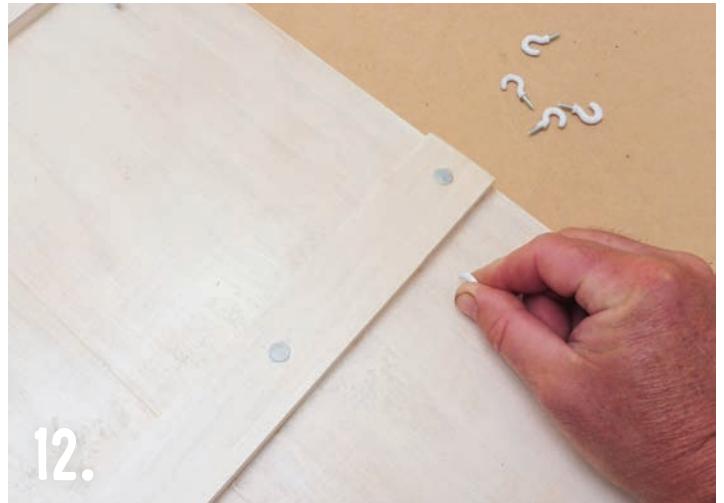


11.



Get a different look

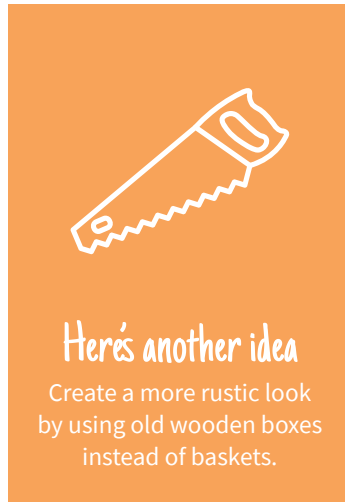
Stain the wooden backing board with any colour from the Resene Colorwood range before applying the Resene Aquaclear.



12.



13.



Here's another idea

Create a more rustic look by using old wooden boxes instead of baskets.



STEP SEVEN

Continue in the same way until all four 370mm lengths are fixed in position. Allow glue to dry.

STEP EIGHT

Carefully stir the Resene Colorwood Whitewash.

STEP NINE

Apply one even coat of Resene Colorwood Whitewash to the wooden backing board, brushing in the direction of the grain. Allow to dry.

STEP TEN

Carefully stir the Resene Aquaclear.

STEP ELEVEN

Apply three coats of Resene Aquaclear to the wooden backing board, allowing two hours for each coat to dry.

STEP TWELVE

Screw in the 15mm cup hooks approx. 20mm below the horizontal pieces of timber and 50mm in from each side edge.

STEP THIRTEEN

Carefully remove the feet and handles from each basket using the pliers, and then hang the baskets from the cup hooks.



Top tip

Use four 65mm screws to fix your produce rack to the wall, screwing directly through the wooden backing board.