

The ancient Chinese way TO MODERN NZ LIVING

Feng shui harnesses wind and water, the universal life forces, to create a harmonious environment full of good energy. It can transform your home.

Originally used to find the most favourable burial sites for ancient emperors, today Western practitioners of feng shui (pronounced *foong shway*) follow the Oriental principals of good balance, harmony and energy to concentrate on the feeling created in a space, such as the rooms of a house.

Interior colour schemes,

placement of furniture and choice of accessories are combined to create amazing environments.

In its simplest form, feng shui balances the five key elements of fire, earth, metal, water and wood, mimicking nature in their use and balance. Certain colours and shapes also represent these elements.

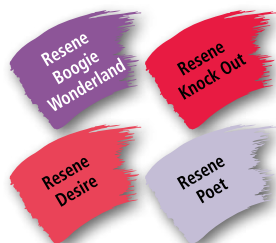
Feng shui's emphasis on

simplicity, lack of clutter and seasonal appropriateness is easy to adopt. Clean, open surfaces keep the energy flowing freely in homes. So, a good de-clutter and some fresh accessories – spring flowers and fruits, for example – is a great way to start a feng shui rejuvenation of your home.

Think colours, shapes and textures too...

FIRE

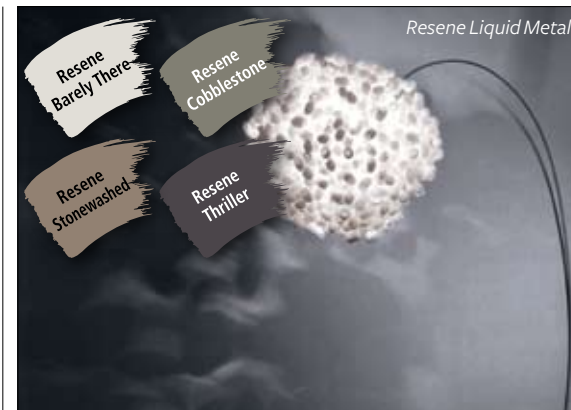
Humans have been drawn to the warmth, security and power of fire since primitive times. Fire is represented in the fireplace and by candles and pointy peak shapes. **Colours:** reds and purples (from lavender to burgundy). Try Resene Boogie Wonderland, Resene X Factor, Resene Dynamite, Resene Poet, Resene Knock Out and Resene Desire.



WOOD

This element is represented by tall, thin forms – as in tree trunks – and materials made from wood or plants, such as linen, rattan, cotton, bamboo and other natural fibres.

Colours: greens or paler blues. Try Resene Escape, Resene Howzat, Resene Koru, Resene Kombi and Resene Reservoir.



METAL

In western homes, elements such as taps, handles, or furniture legs represent metals, as do golds and gilts, and round or domed shapes.

Colours: whites, greys and beiges. Try Resene Fantail, Resene Stonewashed, Resene Barely There, Resene Cobblestone and Resene Thriller.



EARTH

This is represented by honest materials from the earth, such as pottery, tile, crystals, soil in a pot plant, and by square, flat shapes.

Colours: browns, terracottas and yellows. Try Resene Desperado, Resene Wild Thing, Resene Fuel Yellow, Resene Chocolate Lounge and Resene Artefact.

WATER

Asymmetrical, wavy or flowing shapes, glass and mirrors represent water. Unlike in NZ, ancient Chinese rivers were likely to be dark and slow-moving so water elements are darker or richer than you may expect. **Colours:** navy blues, blacks and royal blues. Try Resene Nite Life, Resene True Blue, Resene Optimist, Resene Elvis and Resene Seachange



For more on Feng Shui visit www.resene.co.nz/fengshui