

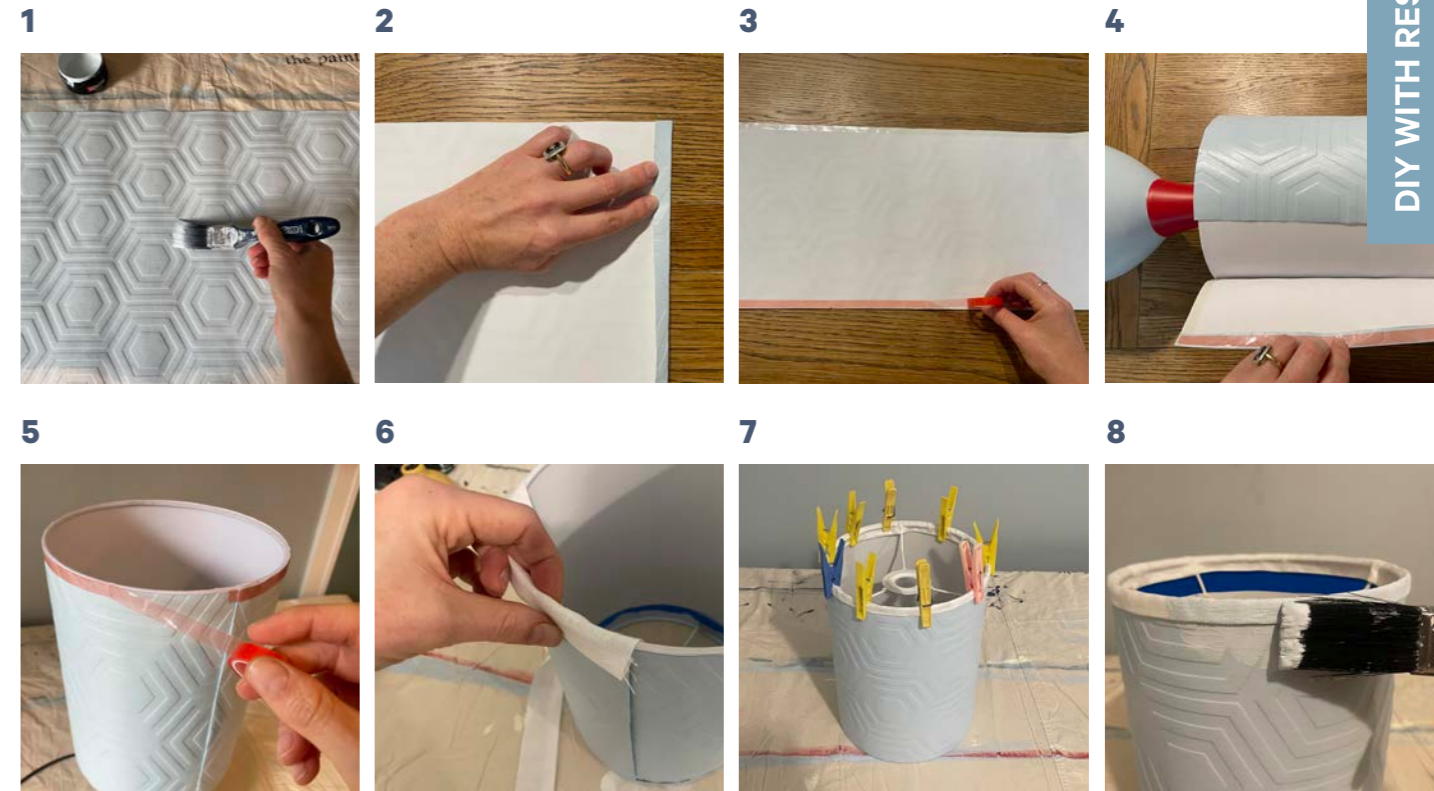
Tactile texture

PROJECT BY SHANI LUCKMAN. PHOTOGRAPHY BY AMANDA REELICK

For more paint, colour ideas and inspiration, visit your Resene ColorShop or resene.co.nz.

Resene
the paint the professionals use

Wall painted in Resene Rice Cake, conch shell painted in Resene Quarter Rice Cake, pot painted in Resene Liquid Gold. Bedding: Resene Living Adara duvet cover set in Botticelli and Resene Living Noora European pillowslip in Thumbs Up. Artwork made from Resene Wallpaper Collection ONB102696234.



DIY WITH RESENE

Welcome texture into your room by using leftover Resene Anaglypta wallpaper to accentuate furniture and décor items. Re-covering a lampshade and cabinet door in wallpaper are simple ways to add visual interest to your bedroom. Although you could use any Resene wallpaper for this project, the best part with Resene Anaglypta wallpaper is that it can be re-painted should you wish to change your colour scheme in the future!

WHAT YOU'LL NEED:

- Resene wallpaper offcut. I used Resene Wallpaper Collection Anaglypta RD567.
- Resene testpots in the colours of your choice. I used Resene Half Escape, Resene Bismark, Resene Quarter Rice Cake and Resene Indian Ink.
- Resene testpot brush
- Ruler and pencil
- Lamp to makeover
- Scissors or craft knife
- Double-sided tape
- Bias binding for the top and bottom of the lamp
- PVA glue
- Painter's tape

ADDITIONAL MATERIALS FOR THE CABINET

- ShurStik Green Granulated Size
- Resene Enamacryl tinted to the colour of your choice. I used Resene Corn Field.

Step 1: Paint your wallpaper in your chosen Resene testpot colour. Allow to dry completely between coats. Measure the height and diameter of your lamp and add 2cm to the width measurement so that the ends overlap when wrapped around the lamp shade. Mark this measurement and cut out.

Step 2: On one end of the short ends of the wallpaper, attach double-sided tape to the wrong side and fold the paper over by 1cm.

Step 3: Run double-sided tape along the top and bottom of the wrong side of the wallpaper.

Step 4: Line the wallpaper up with the edges of the lampshade and overlap the ends, securing with double-sided tape.

Step 5: Attach double-sided tape to the top and bottom of the lampshade.

Step 6: Starting from the seam at the back of the lamp, wrap the bias binding around the top of the lampshade. Overlap the ends and secure using PVA glue.

Step 7: Apply PVA glue to the inside rim and fold the bias binding down. Secure with pegs until the glue has dried. Repeat on the other end.

Step 8: Once the glue is completely dry, run painter's tape around the inside of the lampshade underneath the bias binding. Paint the entire piece of fabric in the same Resene colour as your lampshade. Get creative and paint the base in complementary colours.

CABINET CREATIVITY

Cut the Resene wallpaper to the dimensions of your cabinet door or drawers. Remove any hardware such as handles or knobs. Mix the wallpaper size according to the packet directions and use a testpot brush to coat the cabinet door evenly with the size. Lay your wallpaper over the door and use a clean cloth to gently smooth it out to the sides and corners. Paint the entire piece of furniture in Resene Enamacryl in your choice of colour. Reattach hardware once the paint is dry.



Shani is an all-round creative, experienced in art direction, styling, graphic design and illustration.

@shaniluckman

Wall painted in Resene Emerge.